



Stanwick Road, W14

£3,700 Per calendar month

Dexters



Stanwick Road, W14

HMO LICENCE: A lovely three double bedroom apartment in this exclusive Victorian Mansion located on Stanwick Road. This property has a large lounge, eat in kitchen and modern family bathroom.

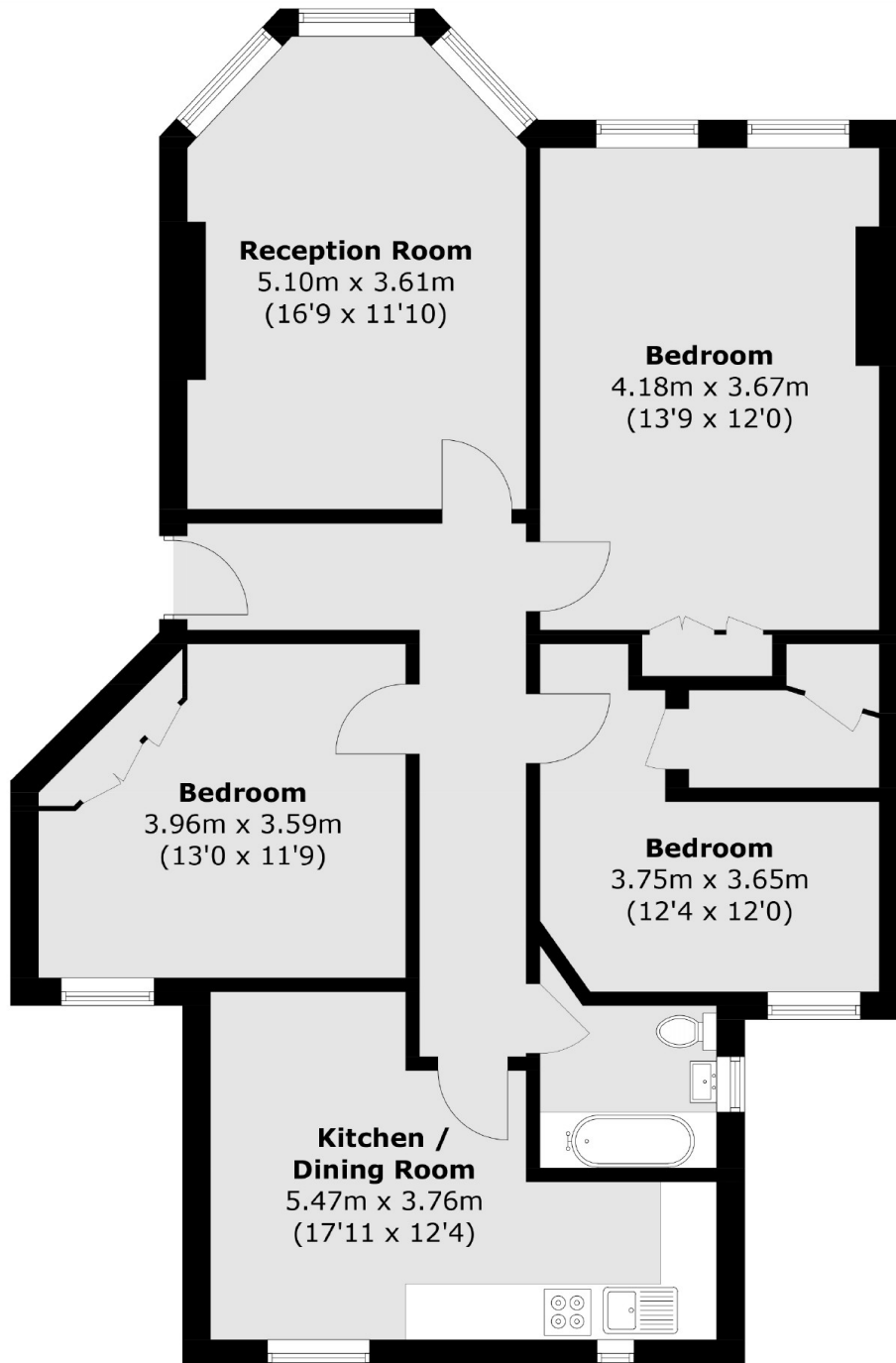
Stanwick Road is close to all the shops, cafés, bars and restaurants that Kensington Olympia, West Kensington, Hammersmith and Kensington High Street have to offer.

Features

- Three Double Bedrooms
- Eat In Kitchen
- Close To Tube
- Mansions Block
- HMO Licence
- Wooden Floors



Stanwick Road,
London, W14



Total area (approx.): 95.8 sq. m (1031.1 sq. ft)