



Lypiatt Court Lypiatt Road, Cheltenham, GL50 2QW

Asking Price £220,000





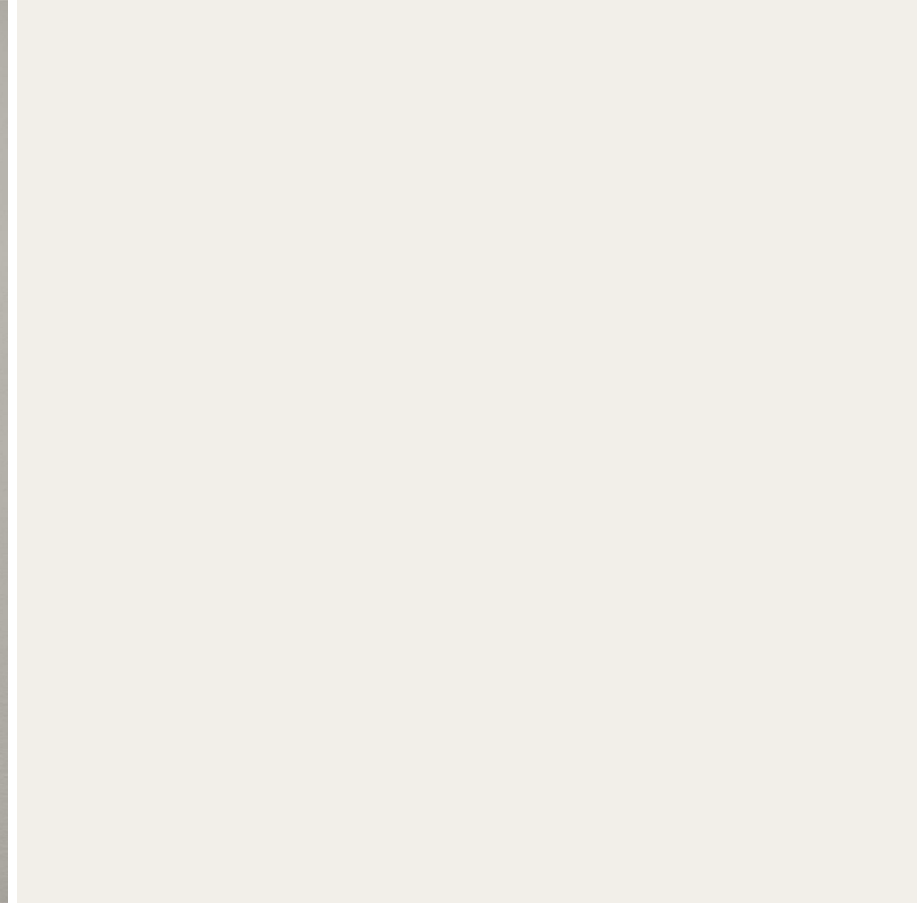
Asking Price £220,000

Lypiatt Court Lypiatt Road

Cheltenham, GL50 2QW

- One double bedroom second-floor flat with lift
- Just 0.5 miles from the vibrant Bath Road
- Modern kitchen with integrated appliances
- Large double bedroom with built-in storage
- Balcony
- Situated in the highly sought-after Montpellier area of Cheltenham
- Offered with no onward chain
- Bright lounge with French doors to a private balcony
- Garage and residents parking
- Underfloor heating in kitchen and bathroom



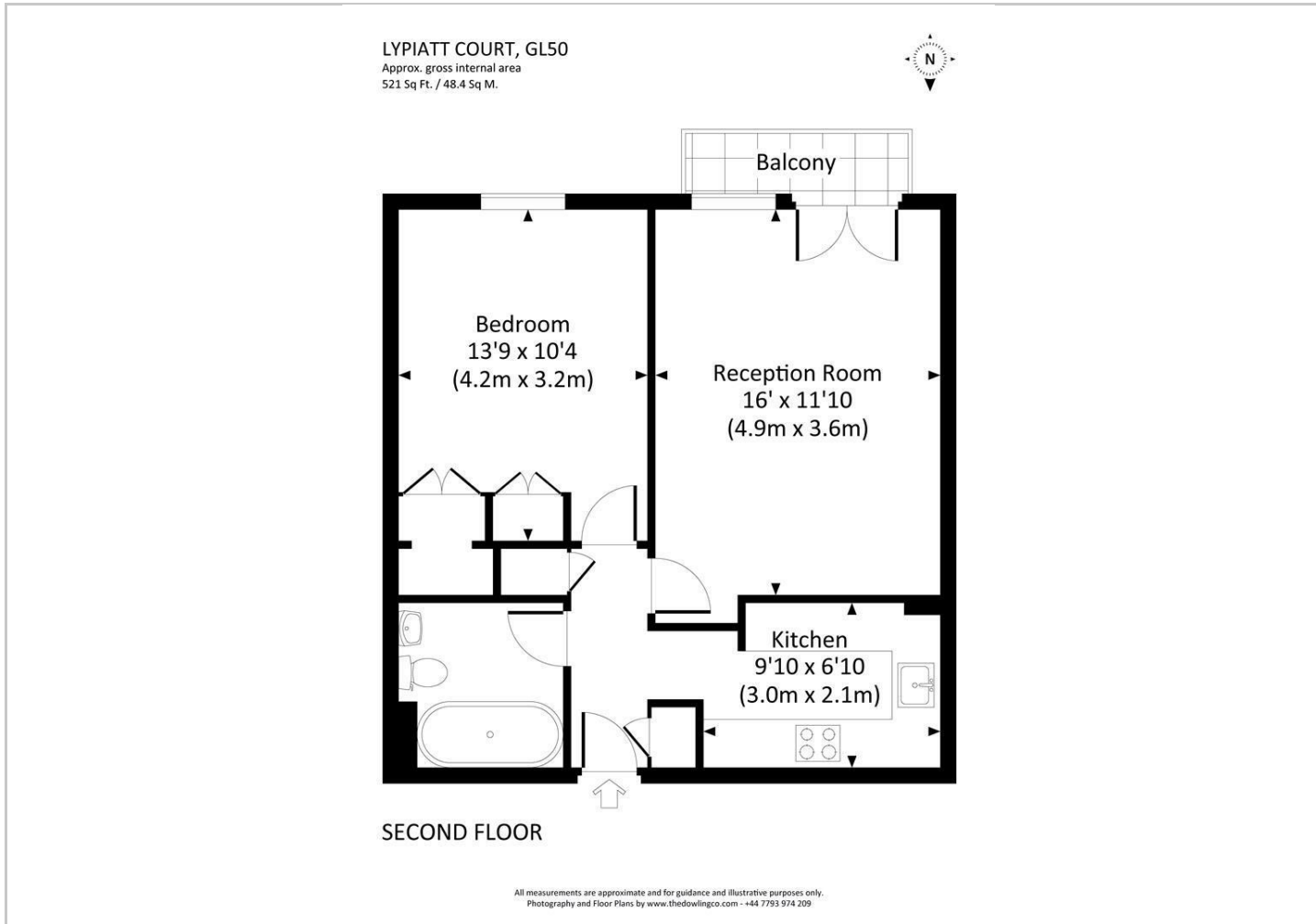


Directions





Floor Plans



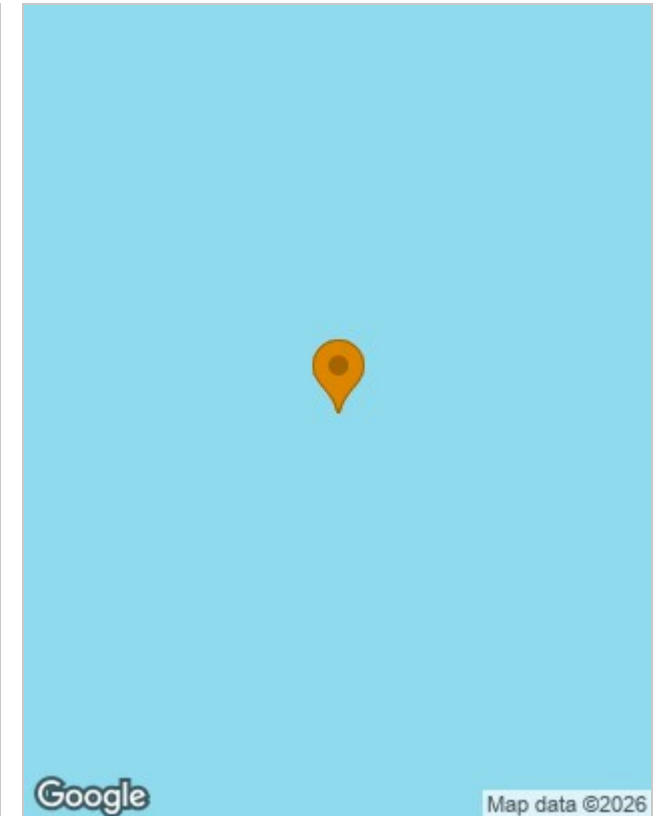
Viewing

Please contact our HMT Office on 01242 521322 if you wish to arrange a viewing appointment for this property or require further information.

The particulars are set out as a general outline only for the guidance of intended purchasers or lessees, and do not constitute, any part of a contract. Nothing in these particulars shall be deemed to be a statement that the property is in good structural condition or otherwise nor that any of the services, appliances, equipment or facilities are in good working order. Purchasers should satisfy themselves of this prior to purchasing.

2 Crescent Terrace, Cheltenham, Gloucestershire, GL50 3PE
Tel: 01242 521322 Email: info@hmt.co.uk <https://www.hmt.co.uk>

Location Map



Energy Performance Graph

