



**Connells**

Mallard Way  
Norton Canes, Cannock



### Hallway

Smart heating dual zone thermostat control. Seamless High polish Porcelain large format floor tiles. Radiator. Ceiling light point. Stairs to first floor and doors to:

### Lounge

Deep pile Saxony carpets Carpets, 100% bleach cleanable. Guaranteed stain free for 10 years. High level single electric socket and TV point for flat screen TV. Radiator. Ceiling light point. Double glazed window to the front aspect.

### Kitchen/Dining/Living

Upgraded to Quartz worktops to kitchen with upstand, includes upgraded under-fixed bowl and a half Rangemaster Atlantic sink with chrome mixer tap. High gloss mid grey with stainless steel handles. Upgraded to a stainless steel and glass chimney hood with LED lighting and 3 fan speed settings. Upgraded to an Electrolux integrated 60cm 4 zone induction hob, touch controls, child lock, and timer. Upgraded to an Electrolux undercounter double oven in stainless steel and black glass with 5 function top oven and 5 functions in the main oven, including catalytic liners, anti fingerprint stainless steel and fully programmable timer with white LED's. Upgrade to Zanussi fully integrated 50/50 low frost fridge-freezer. Electronic controls and convenient LCD display to control the fridge functions, with matching feature door. Upgrade to Zanussi full size integrated dishwasher with matching feature door, 5 programmes, delay start and air dry technology. Includes plumbing. Water Consumption 9.9L. High level single electric socket and TV point to kitchen living area for flat screen TV. Seamless High polish Porcelain large format floor tiles. Low energy LED downlighters spotlights in kitchen.

### Dining Room

Seamless High polish Porcelain large format floor tiles. Double glazed window to the front aspect. Radiator. Ceiling light point.

### Utility

Upgrade to Quartz worktops to utility room with upstand. Rangemaster Atlantic undermounted single bowl sink with chrome mixer tap. Upgrade to boiler housing with matching feature door in utility. Upgrade to Zanussi fully integrated washer / dryer with matching feature door with 1600 rpm spin speed, 14 programmes, AutoAdjust, Quickwash programme, LED display, 7kg wash capacity, 4kg dry load. Water Consumption 95L. Seamless High polish Porcelain large format floor tiles.

### Guest W.C

Seamless High polish Porcelain large format floor tiles. WC. Wash hand basin.

### Landing

Smart heating dual zone thermostat control

### Master Bedroom

Straight topped hinged wardrobe with both door and framework from the 'Upgrade' choices - Straight topped Lauren in High Gloss Cashmere. Including tower storage unit, high level blanket shelf and double hanging. Deep pile Saxony carpets Carpets, 100% bleach cleanable. Guaranteed stain free for 10 years. Silver coloured aluminum door threshes. Double glazed window to the front aspect. Radiator. Ceiling light point and door to:



## En-Suite

Upgrade existing thermostatic shower to Mira Minimal ERD mixer shower with dual shower head including rain shower in chrome finish in en-suite. Pisa heated anthracite towel radiator to en-suite. Luxury Vinyl Tile flooring to upstairs en-suite. Upgrade to half height wall tiles from the polished urban range. Chrome trims to the edges and corners of wall tiles. Illuminated and heated bathroom mirror with touch control and integrated magnification mirror and shaver socket. Low energy LED downlighters. Spotlights. Double glazed window to the front aspect.

## Bedroom Two

Deep pile Saxony carpets. Carpets, 100% bleach cleanable. Guaranteed stain free for 10 years. Silver coloured aluminum door thresholds. Glacier sliding door wardrobe. Including tower storage unit,

high level blanket shelf and double hanging. Radiator. Ceiling light point. Double glazed window to the front aspect.

## Bedroom Three

Deep pile Saxony carpets. Carpets, 100% bleach cleanable. Guaranteed stain free for 10 years. Silver coloured aluminum door thresholds. Radiator. Ceiling light point. Double glazed window to the rear aspect.

## Bedroom Four

Deep pile Saxony carpets. Carpets, 100% bleach cleanable. Guaranteed stain free for 10 years. Silver coloured aluminum door thresholds. Radiator. Ceiling light point. Double glazed window to the rear aspect.

## Bedroom Five

Deep pile Saxony carpets. Carpets, 100% bleach cleanable. Guaranteed stain free for 10 years. Silver coloured aluminum door thresholds. Radiator. Ceiling light point. Double glazed window to the rear aspect.

## Bathroom

Upgrade to Mira Azora Dual 9.8 kW electric shower with dual shower head including rain shower and frosted glass fascia, over the bath. Including full height tiling above bath, with upgraded grey stone effect tiles and fitting of a shower screen. Pisa heated anthracite towel radiator to main bathroom. Luxury Vinyl Tile flooring. Chrome trims to the edges and corners of wall tiles.

Shaver socket. Low energy LED downlighters. Spotlights. Double glazed window to the side aspect.

## Externally

### Front

Full front house contemporary "up and down" external lights to entry and far sides. 1.8m high timber gate to garden. Private Tarmac driveway to the side for multiple vehicles and additional parking to the front. Paved pathway to front entrance door. Storm Porch.

### Rear

Single electrical external socket (including internally mounted switched fused spur isolation switch).

Tap to garden, fitted adjacent to kitchen complete with isolator valve. 1.8m high timber gate to driveway. Lawn area.

## Double Garage

Having up and over doors. Power and lighting. Additional double sockets. Full garage contemporary "up and down" external lights.

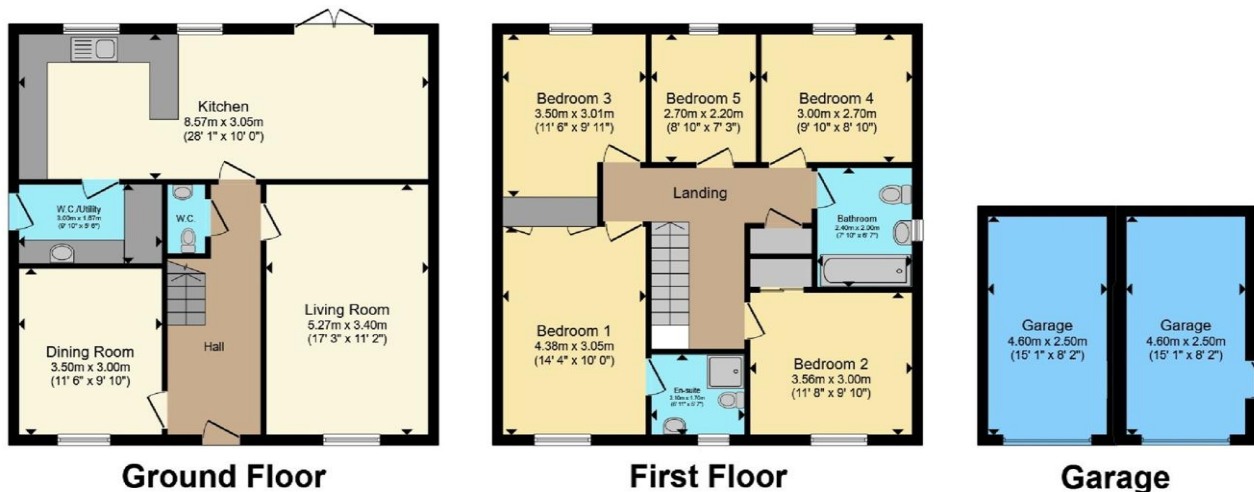
## Location

Perfectly located just a stones throw away to Chasewater Country Park offering extensive water sport activities, nature trails and the heritage steam railway providing a fun day out for all ages right on your doorstep. Commuter benefits include easy access to the A5 and M6 Toll Road linking the Midlands motorway network.









Total floor area 155.8 m<sup>2</sup> (1,677 sq.ft.) approx

This floor plan is for illustrative purposes only. It is not drawn to scale. Any measurements, floor areas (including any total floor area), openings and orientation are approximate. No details are guaranteed, they cannot be relied upon for any purpose and they do not form part of any agreement. No liability is taken for any error, omission or misstatement. A party must rely upon its own inspection(s). Powered by [www.propertybox.io](http://www.propertybox.io)



To view this property please contact Connells on

**T 01543 500923**  
**E [cannock@connells.co.uk](mailto:cannock@connells.co.uk)**

10-12 Wolverhampton Road  
 CANNOCK WS11 1AH

EPC Rating: B Council Tax  
 Band: E

Tenure: Freehold

**view this property online [connells.co.uk/Property/CNK108928](http://connells.co.uk/Property/CNK108928)**



1. MONEY LAUNDERING REGULATIONS Intending purchasers will be asked to produce identification documentation at a later stage and we would ask for your co-operation in order that there will be no delay in agreeing the sale. 2. These particulars do not constitute part or all of an offer or contract. 3. The measurements indicated are supplied for guidance only and as such must be considered incorrect. Potential buyers are advised to recheck measurements before committing to any expense. 4. We have not tested any apparatus, equipment, fixtures, fittings or services and it is in the buyers interest to check the working condition of any appliances.

Connells Residential is registered in England and Wales under company number 1489613, Registered Office is Cumbria House, 16-20 Hockliffe Street, Leighton Buzzard, Bedfordshire, LU7 1GN. VAT Registration Number is 500 2481 05.

**See all our properties at [www.connells.co.uk](http://www.connells.co.uk) | [www.rightmove.co.uk](http://www.rightmove.co.uk) | [www.zoopla.co.uk](http://www.zoopla.co.uk)**

Property Ref: CNK108928 - 0001