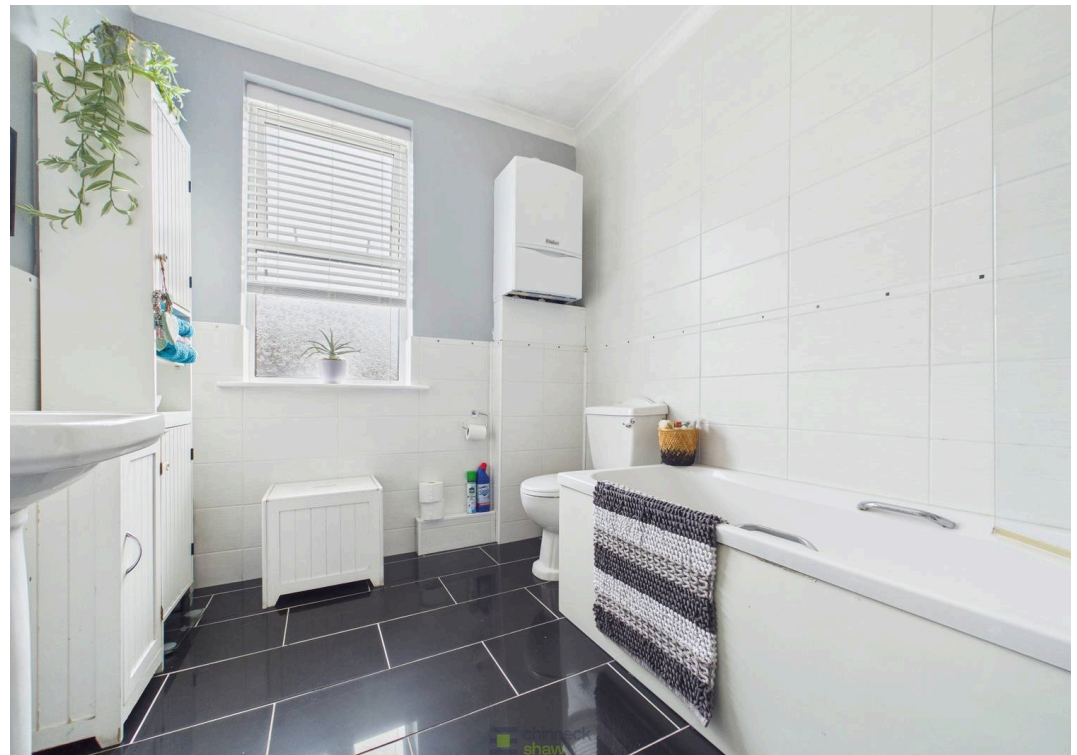
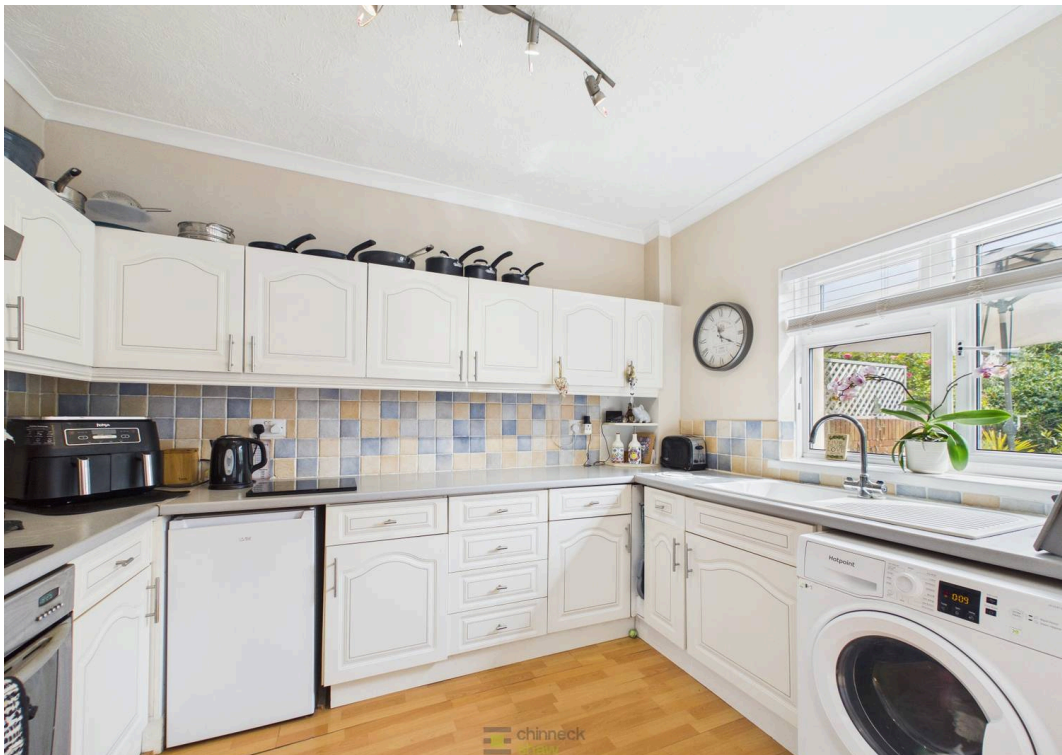




6 Ringwood Road, Southsea

Offers in Region of £290,000

 chinneckshaw



6 Ringwood Road

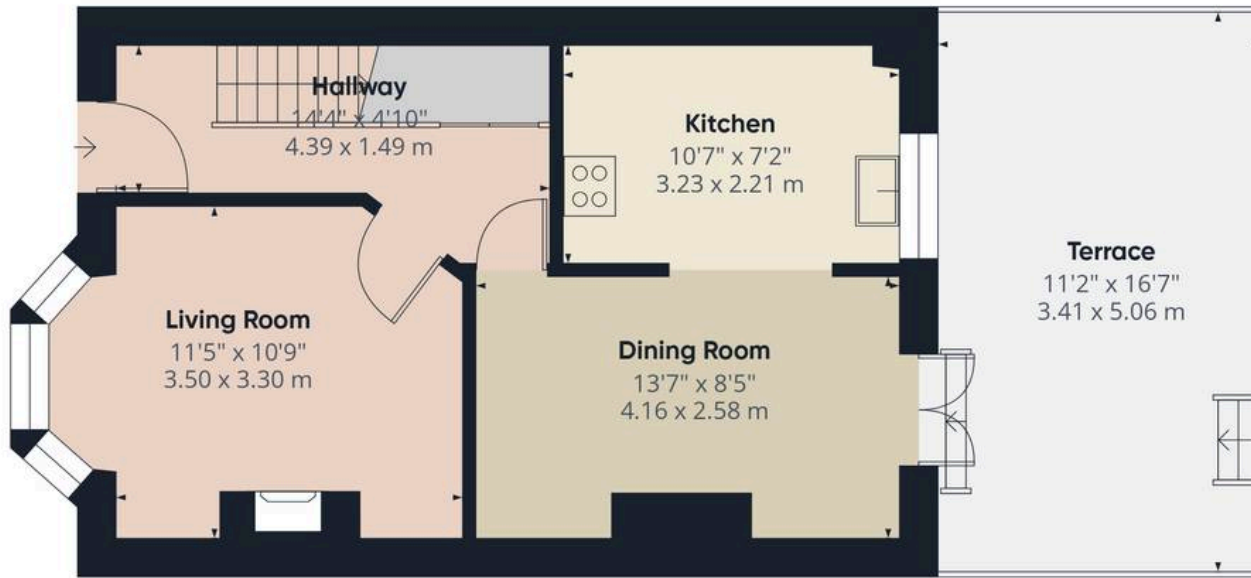
Southsea

Walk into this beautifully presented two-bedroom terraced house and enjoy its welcoming atmosphere and stylish, neutral décor, perfect for relaxed, modern living. The spacious lounge is ideal for unwinding or entertaining, while the kitchen and dining room offer plenty of space for meals and get-togethers. Filled with natural light, this cheerful area adapts to your lifestyle, whether you love cooking or simply enjoying a morning coffee.

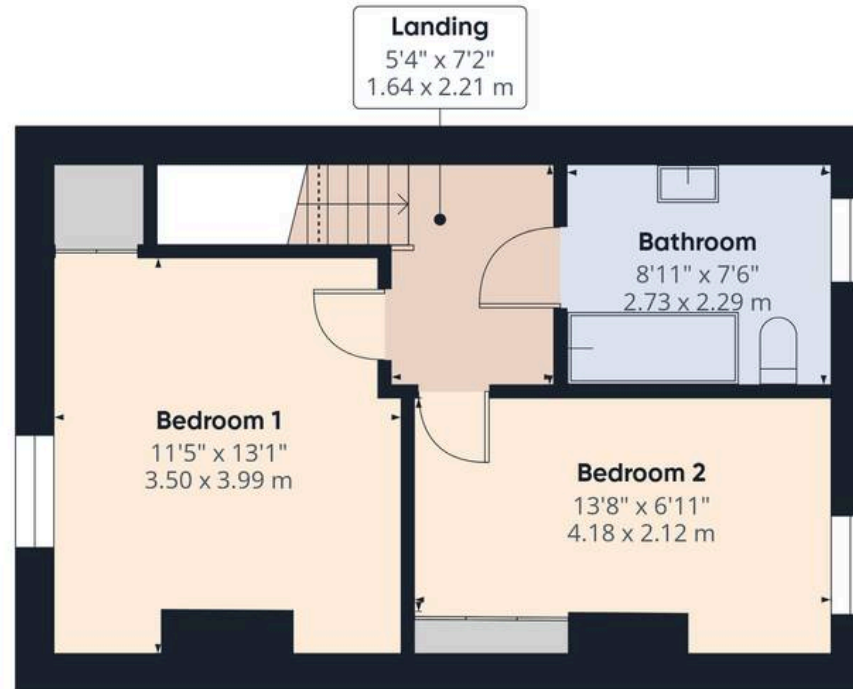
Upstairs, there are two comfortable bedrooms to suit your needs, and a large bathroom with modern fittings provides a relaxing retreat. The property is perfect for first-time buyers, professionals, or small families, with its move-in ready appeal and excellent location just a short walk from the seafront, shops, and cafés. Commuting is easy thanks to good road links. The home's fresh décor and versatile rooms allow you to personalise the space at your own pace.

Material Information • Tenure: Freehold • Council Tax: Band C • Electricity, Water, Sewage: Mains Supply • Heating: Gas • Broadband: Fibre available • Parking: Permit • Mobile: EE, Vodafone, O2, Three • Flood Risk: Low





Ground Floor



Floor 1



Approximate total area⁽¹⁾

772 ft²

71.7 m²

Balconies and terraces

189 ft²

17.6 m²

(1) Excluding balconies and terraces

Reduced headroom

----- Below 5 ft/1.5 m

Calculations reference the RICS IPMS 3C standard. Measurements are approximate and not to scale. This floor plan is intended for illustration only.

GIRAFFE 360



Chinneck Shaw

Bridge House, Milton Road, Portsmouth – PO3 6AN

023 9282 6731

hello@chinneckshaw.co.uk

www.chinneckshaw.co.uk/

Chinneck Shaw, Bridge House, Milton Road, PO3 6AN Consumer Protection from Unfair Trading Regulations 2008: These details are for guidance only and complete accuracy cannot be guaranteed. If there is any point which is of particular importance, verification should be obtained. They do not constitute a contract or part of a contract. All measurements are approximate. No guarantee can be given with regard to planning permissions or fitness for purpose. No apparatus, equipment, fixture or fitting has been tested. Items shown in the photographs are NOT necessarily included. Interested Parties are advised to check availability and make an appointment to view before travelling to see a property.