



Sable Street, N1

£375,000

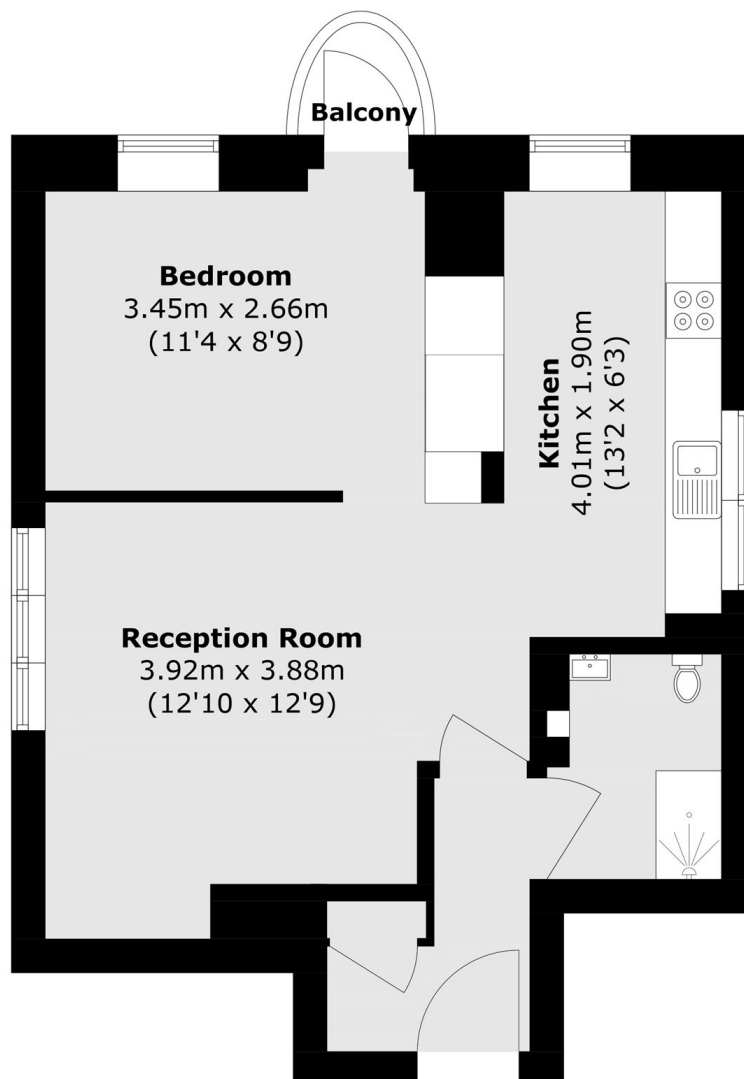
A bright and spacious one bedroom apartment set on the first floor of a small brick build development moments from Upper Street. The apartment has a private balcony, separate kitchen and is being offered chain free.

Nestled neatly behind Islington Town Hall, the property affords superb access to the wide ranging amenities that Upper Street has to offer. It is superbly located for access to the transportation hub of Highbury & Islington, offering connections through London via both the Underground (Victoria Line) and the London Overground network. Essex Road station and Angel station also provide good links to the City.

Features

- First Floor
- One Bedroom
- Separate Kitchen
- Private Balcony
- Chain Free
- Ample Storage

Sable Street, London, N1



Total area (approx.): 41.9 sq. m (451.0 sq. ft)
Balcony area (approx.): 0.8 sq. m (8.6 sq. ft)