



Darwin Road, W5

£800,000

* O.I.E.O* A lovely three-bedroom semi-detached family home, recently renovated throughout. Presented in excellent condition, and boasting a secluded low-maintenance patio-style garden with an insulated garden office and side access. This charming property, packed with both new and original features, is offered to the market with no onward chain and provides exciting potential to extend into the spacious loft (STPP). An ideal opportunity for families seeking a carefully restored home with room to grow.

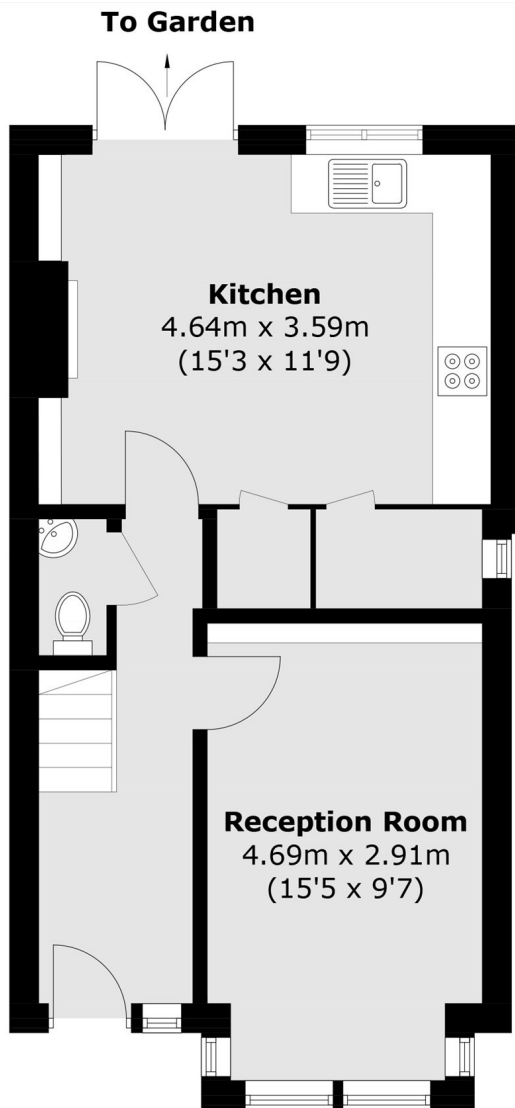


Light and airy throughout, this family home includes many period features as well as modernisations such as underfloor heating throughout the ground floor and new double glazed sash windows. The ground floor offers a front reception room, WC and kitchen/diner. The first floor comprises two double bedrooms, a single bedroom, and a spacious family bathroom.

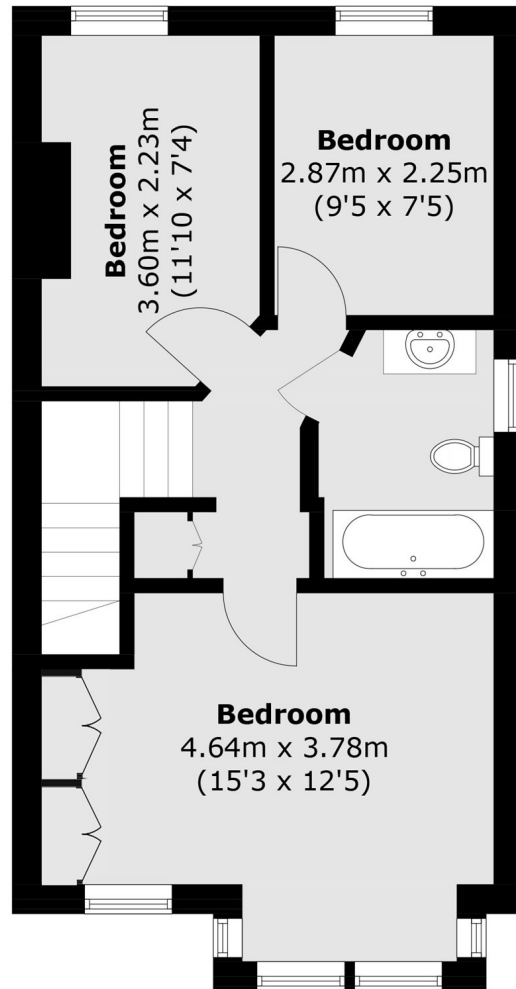
Ideally located for a range of transport links including Northfields and South Ealing stations (Piccadilly Line), West Ealing (Elizabeth Line) and Brentford (Thameslink), as well as many frequent bus links. Local parks include Blondin, Boston Manor, Lammas & Walpole. Well-regarded schools Ealing Fields, Gunnersbury, Mount Carmel and Little Ealing are close by.

- No Onward Chain • Three Bedroom • Secluded Garden •
- Great Transport Links • Well Regarded Schools • Potential To Extend •





Ground Floor



First Floor

Total area (approx.): 84.1 sq. m (905.3 sq. ft)

Robertson Smith & Kempson Northfields Sales
116 Northfield Avenue,
London, W13 9RT
020 8566 2340
northfieldssales@robertsonsmithandkempson.co.uk

Energy Rating: . We aim to make our particulars both accurate and reliable. However they are not guaranteed; nor do they form part of an offer or contract. If you require clarification on any points then please contact us, especially if you're traveling some distance to view. Please note that appliances and heating systems have not been tested and therefore no warranties can be given as to their good working order.