

# 9 Hastingwood Park

Harlow, Essex

Offers over £700,000

Welcome to Hastingwood Park. A stylish four double bedroom home nestled with a peaceful gated cul-de-sac. Full of Scandinavian style, we are in love with this home!

Council Tax band: F

Tenure: Freehold

- Exclusive gated development
- Open plan living space
- Driveway suitable for 4 cars
- Spacious landscaped garden
- Ensuite Shower Room
- Short drive to Epping station and high street
- Easy access to M11
- Four double bedrooms



**Entrance Hallway**

**WC**

**Lounge**

11' 2" x 12' 11" (3.41m x 3.93m)

**Study**

11' 2" x 8' 2" (3.41m x 2.48m)

**Kitchen / Living / Dining**

18' 4" x 21' 11" (5.60m x 6.69m)

**Primary Bedroom**

12' 10" x 13' 0" (3.91m x 3.97m)

**Ensuite Shower Room**

**Bedroom**

11' 2" x 11' 6" (3.40m x 3.51m)

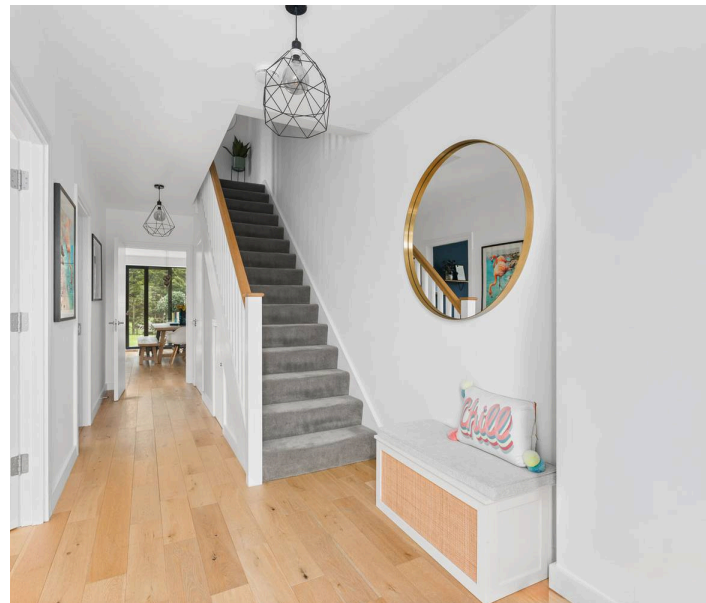
**Bedroom**

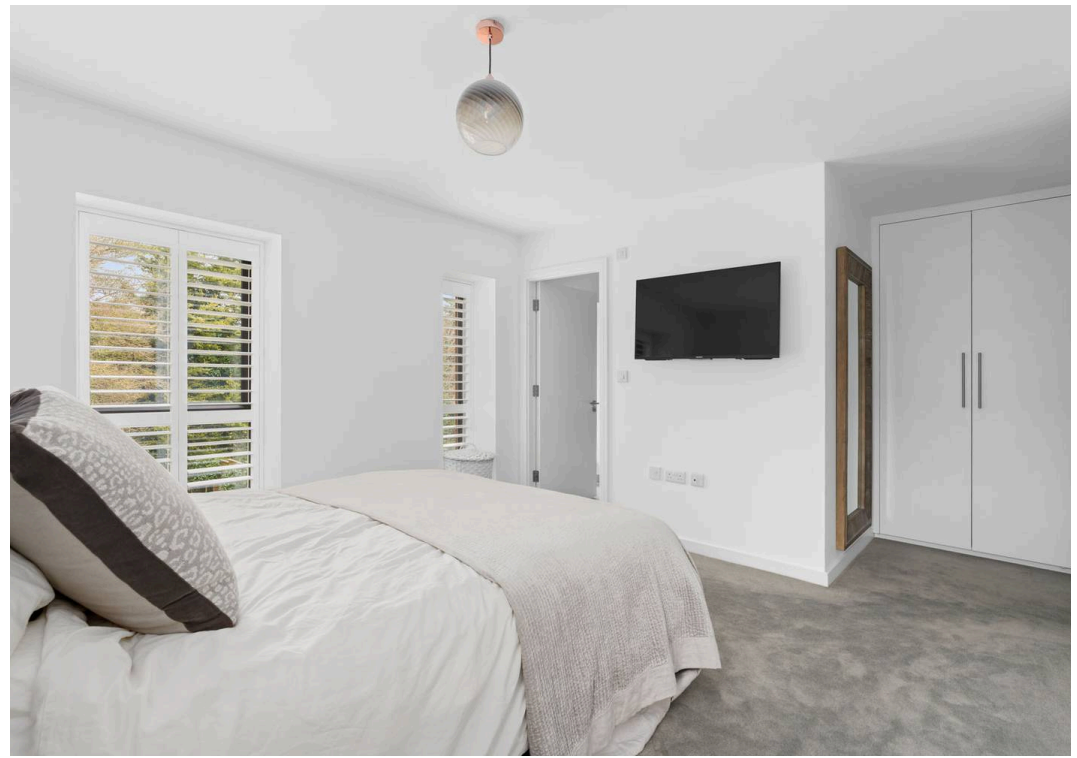
12' 4" x 9' 5" (3.76m x 2.88m)

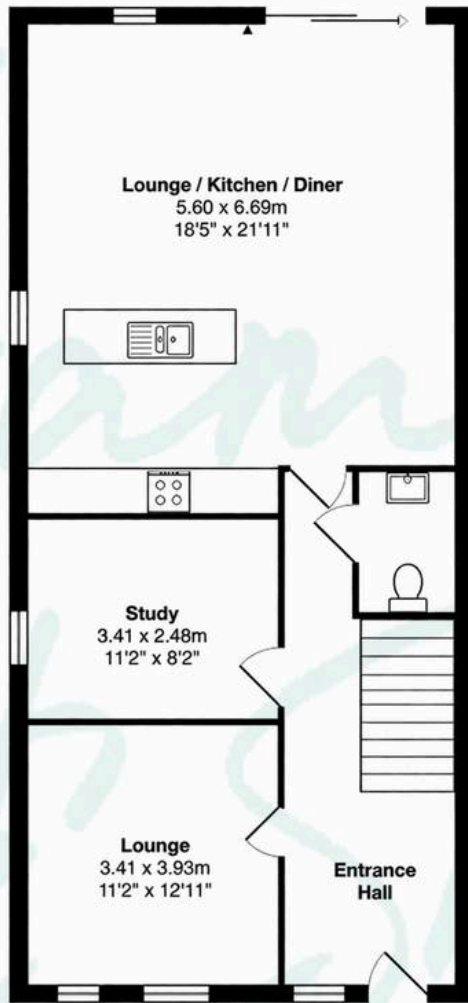
**Bedroom**

7' 8" x 11' 6" (2.33m x 3.51m)

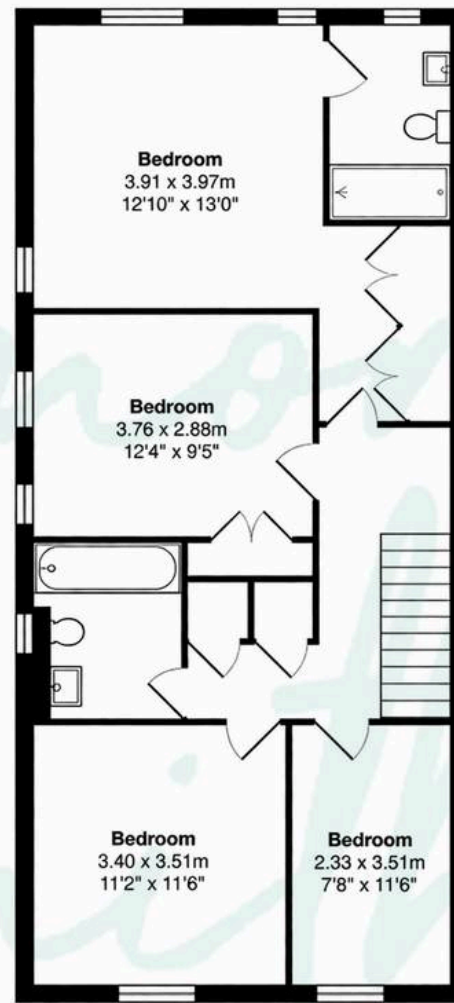
**Bathroom**



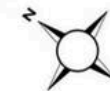




Ground Floor



First Floor



**Total Area: Approx. 151.3 sq m (1,629 sq ft)**

This floor plan is for illustrative purposes only and is not to scale. Measurements are approximate and intended as a guide. All details should be verified independently.