



PLOUGH LANE, SW17

£2,700 PCM

- Two Double Bedrooms
- Private Balcony
- Two Bathrooms
- Spacious Throughout
- Modern Development
- Bills Included

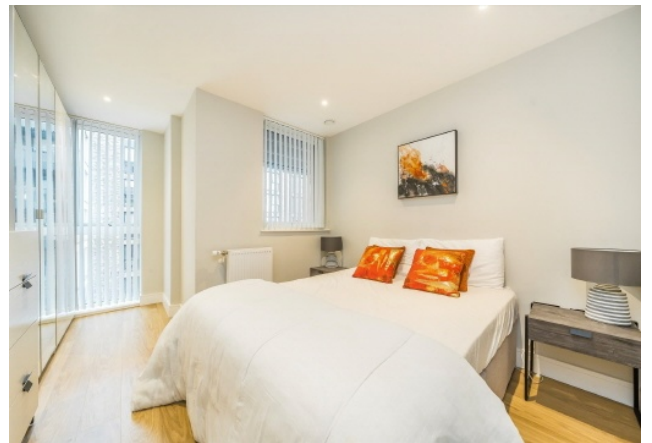




ABOUT THE HOME

A two double bedroom apartment with large private balcony in the popular Plough Lane development. A two double bedroom, two bathroom new build apartment located on the 4th floor. There is a large private balcony with views of the communal gardens and with the added benefit of a concierge.

Orton House is located within the much sought after Stadia 3 in the Wimbledon Grounds development and is 0.7 miles of Haydons Road mainline station and 0.8 mile of both Earlsfield mainline station and 1 mile to Tooting Broadway underground station. The local amenities including shops, bars, restaurants and the green open spaces of the Wandle Meadow Nature Park.





JACKSONS EARLSFIELD

372-374 Garratt Lane,
Earlsfield, London, SW18 4ES
Sales: 020 8971 7979
Lettings: 020 8971 7070

Energy Rating: We aim to make our particulars both accurate and reliable. However they are not guaranteed; nor do they form part of an offer or contract. If you require clarification on any points then please contact us, especially if you're traveling some distance to view. Please note that appliances and heating systems have not been tested and therefore no warranties can be given as to their good working order.