



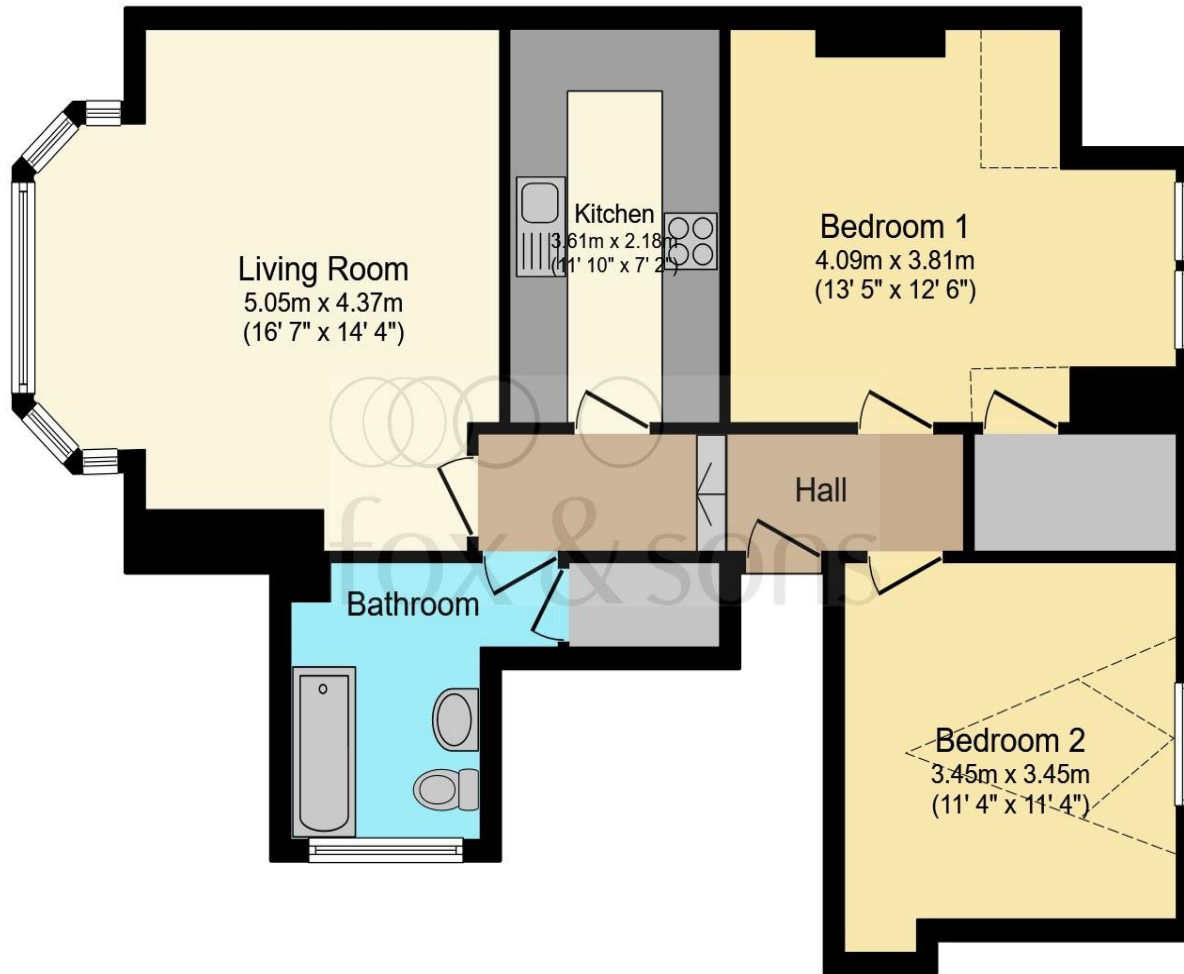
Westfield Darley Road, Eastbourne BN20 7PB

welcome to

Westfield Darley Road, Eastbourne

A well presented and spacious two double bedroom second floor apartment close to Meads Village, town centre, train station and seafront. Benefiting from having lovely views, bay fronted lounge and modern kitchen & bathroom.





Communal Entrance

Entrance Hall

Lounge

16' 7" max x 14' 4" max (5.05m max x 4.37m max)

Kitchen

11' 10" x 7' 2" (3.61m x 2.18m)

Bedroom 1

13' 5" max x 12' 6" max (4.09m max x 3.81m max)

Bedroom 2

11' 4" max x 11' 4" max (3.45m max x 3.45m max)

Bathroom

Total floor area 76.3 m² (821 sq.ft.) approx

This floor plan is for illustrative purposes only. It is not drawn to scale. Any measurements, floor areas (including any total floor area), openings and orientation are approximate. No details are guaranteed, they cannot be relied upon for any purpose and they do not form part of any agreement. No liability is taken for any error, omission or misstatement. A party must rely upon its own inspection(s). Powered by www.focalagent.com

welcome to

Westfield Darley Road, Eastbourne

- MEADS LOCATION
- TWO DOUBLE BEDROOMS
- SECOND FLOOR
- BAY FRONTED LOUNGE
- MODERN KITCHEN AND BATHROOM

Tenure: Leasehold EPC Rating: D

Council Tax Band: B Service Charge: 2000.00

Ground Rent: Ask Agent

This is a Leasehold property with details as follows; Term of Lease 999 years from 01 Apr 1987. Should you require further information please contact the branch. Please Note additional fees could be incurred for items such as Leasehold packs.

£230,000



Please note the marker reflects the postcode not the actual property

view this property online fox-and-sons.co.uk/Property/EBN120490



Property Ref:
EBN120490 - 0005

1. MONEY LAUNDERING REGULATIONS Intending purchasers will be asked to produce identification documentation at a later stage and we would ask for your co-operation in order that there is no delay in agreeing the sale. 2. These particulars do not constitute part or all of an offer or contract. 3. The measurements indicated are supplied for guidance only and as such must be considered incorrect. Potential buyers are advised to recheck measurements before committing to any expense. 4. We have not tested any apparatus, equipment, fixtures or services and it is in the buyers interest to check the working condition of any appliances. 5. Where an EPC, or a Home Report (Scotland only) is held for this property, it is available for inspection at the branch by appointment. If you require a printed version of a Home Report, you will need to pay a reasonable production charge reflecting printing and other costs. 6. We are not able to offer an opinion either written or verbal on the content of these reports and this must be obtained from your legal representative. 7. Whilst we take care in preparing these reports, a buyer should ensure that his/her legal representative confirms as soon as possible all matters relating to title including the extent and boundaries of the property and other important matters before exchange of contracts.


fox & sons



01323 410911



Eastbourne@fox-and-sons.co.uk



19 Cornfield Road, EASTBOURNE, East Sussex,
BN21 4QD



fox-and-sons.co.uk