



Connells

Lodgefield
Welwyn Garden City



Property Description

Situated in a desirable west side location, this spacious three-bedroom terraced home offers generous living accommodation and fantastic potential for further improvement.

The property has been extended to provide additional living space, making it well-suited to growing families or those needing flexible accommodation. Internally, the home would benefit from some updating, allowing buyers to personalise and add value to their own taste and style. A standout feature is the modern wet room, offering practicality and convenience.

Externally, the property boasts a large rear garden, perfect for families, entertaining, or future landscaping projects. To the front, there is ample on-street parking available.

Ideally located close to local shops, schools, and amenities, the home provides excellent convenience for everyday living while remaining in a well-regarded residential setting.

Offered at a great price, this property represents an excellent opportunity for buyers seeking space, location, and potential.

Lounge

20' 6" x 10' (6.25m x 3.05m)

Kitchen

20' 6" x 5' 5" (6.25m x 1.65m)

Dining Room

10' 4" x 9' 3" (3.15m x 2.82m)

Bedroom 1

13' 3" x 12' 4" (4.04m x 3.76m)

Bedroom 2

13' 1" x 8' 8" (3.99m x 2.64m)

Bedroom 3

8' 4" x 8' (2.54m x 2.44m)

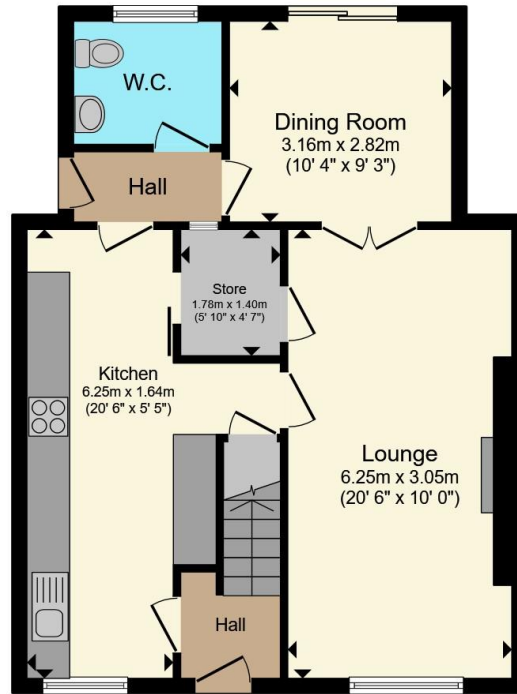
Shower Room

7' 2" x 5' 6" (2.18m x 1.68m)

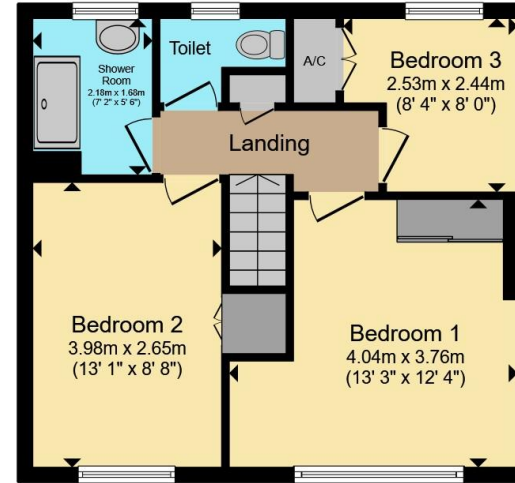








Ground Floor



First Floor

Total floor area 101.0 m² (1,087 sq.ft.) approx

This floor plan is for illustrative purposes only. It is not drawn to scale. Any measurements, floor areas (including any total floor area), openings and orientation are approximate. No details are guaranteed, they cannot be relied upon for any purpose and they do not form part of any agreement. No liability is taken for any error, omission or misstatement. A party must rely upon its own inspection(s). Powered by www.propertybox.io



To view this property please contact Connells on

T 01707 322 903
E welwyngardencity@connells.co.uk

38 Wigmores North
 WELWYN GARDEN CITY AL8 6PH

EPC Rating: D Council Tax
 Band: D

Tenure: Freehold

view this property online connells.co.uk/Property/WWY307723



1. MONEY LAUNDERING REGULATIONS Intending purchasers will be asked to produce identification documentation at a later stage and we would ask for your co-operation in order that there will be no delay in agreeing the sale. 2. These particulars do not constitute part or all of an offer or contract. 3. The measurements indicated are supplied for guidance only and as such must be considered incorrect. Potential buyers are advised to recheck measurements before committing to any expense. 4. We have not tested any apparatus, equipment, fixtures, fittings or services and it is in the buyers interest to check the working condition of any appliances.

Connells Residential is registered in England and Wales under company number 1489613, Registered Office is Cumbria House, 16-20 Hockliffe Street, Leighton Buzzard, Bedfordshire, LU7 1GN. VAT Registration Number is 500 2481 05.

See all our properties at www.connells.co.uk | www.rightmove.co.uk | www.zoopla.co.uk

Property Ref: WWY307723 - 0005