



The Buckle Marine Parade, Seaford, BN25 2QR

The Buckle Marine Parade, Seaford, BN25 2QR

**Offers In Excess Of
£1,500,000**

The Buckle, as the house is named, has been referred to by many as Seaford's most iconic landmark and the exterior makes this name easy to comprehend. This large family home is spread across three floors and features a turret in the style of a Martello tower.

Upon entering the newly refurbished property, you are sure to be blown away by the interior and stunning sea views, you will never need to worry about the lack of space with 8 bedrooms and 6 bathrooms, plus 2 studies/ home offices.

On the ground floor there is spacious recreation room, a lounge in the extension with fully fitted kitchen, conservatory an enclosed patio garden, 2 double bedrooms, a separate cloakroom and bathroom.

Heading upstairs you will find the magnificent kitchen with its panoramic views a dining area a large lounge, a snug and a

further double bedroom with en suite. This first floor is the one that best makes use of the stunning sea views on your doorstep. Huge windows overlook the sea and the picturesque beach below, both of which are sights you are unlikely to ever tire of, whilst the cosy lounge also incorporates part of the house's eye-catching turret.

Two further bedrooms are found once you head up to the second floor, both of which have an en-suite bathroom and a balcony with stunning views. Stunning views to the open sea and harbour.

Sitting Room are located in the second floor section of the turret and features an en-suite bedroom and a staircase to the magnificent circular lounge which offers views over both the coast and the nearby hills.

An extension with 2 double bedrooms; lounge; kitchen; cloakroom; bathroom and a conservatory.

The house is also less than a mile to the town centre and the nearest train station so is very conveniently placed.







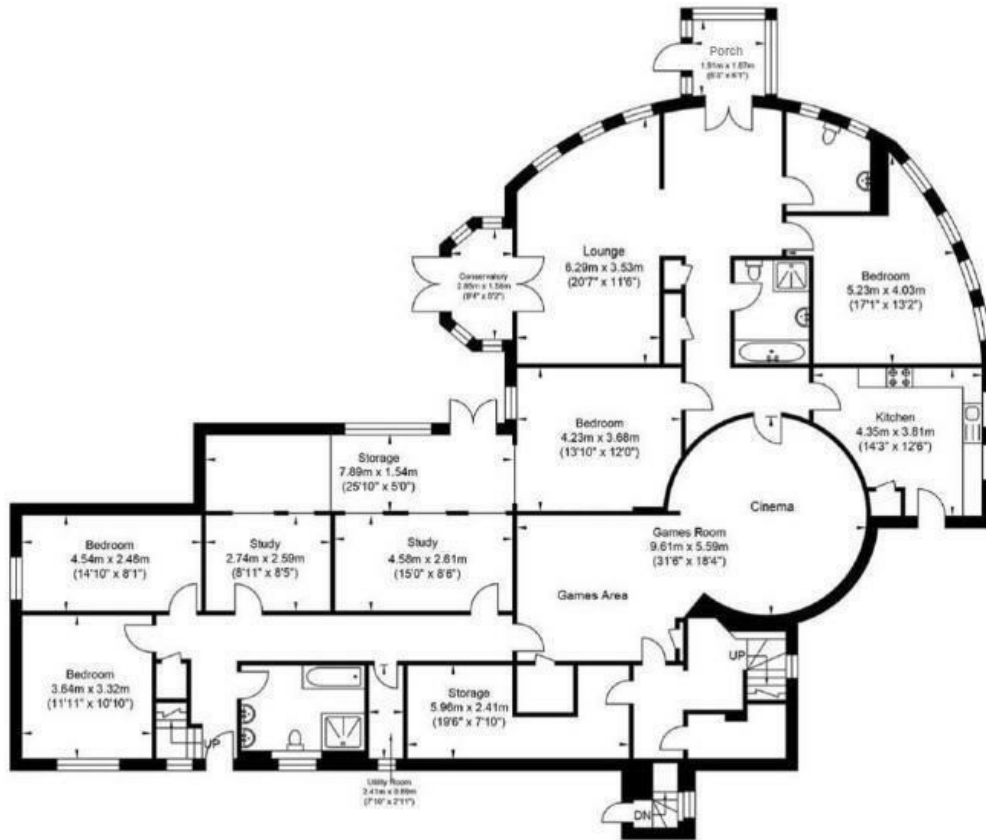


Entrance Hall
Ground Floor Extension;
Two Bedrooms
Bathroom
Cloakroom
Kitchen
Lounge
Conservatory
Private Garden
Ground Floor
Cinema Room
Games Room
Two Studies
Two Bedrooms
One Bathroom
Storage
Access to Enclosed Garden
First Floor
Kitchen/Living Dining Room
Snug

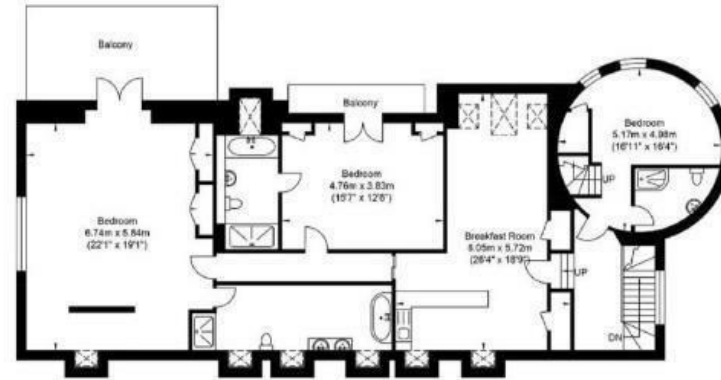
Walk in Store Room
Bedroom
Ensuite Bathroom
Cloakroom
Entrance Hall with Walk in Wardrobe
Second Floor
Access to Turret
Turret Bedroom
Turret Bathroom
Turret Lounge (3rd Floor)
Landing
Breakfast Room
Two Bedrooms
Two Bathrooms
Two Balconies
Two Garages & Store
Rear Enclosed Garden
Extensive Parking
EPC: C
Council Tax Band: G



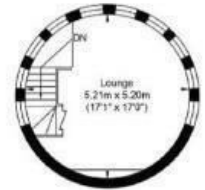




Ground Floor
Approximate Floor Area
2832.41 sq ft
(263.14 sq m)



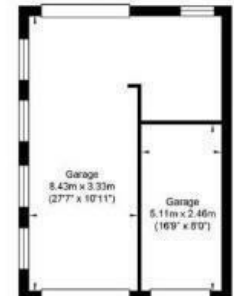
Second Floor
Approximate Floor Area
1700.91 sq ft
(158.02 sq m)



Third Floor
Approximate Floor Area
222.27 sq ft
(20.65 sq m)



First Floor
Approximate Floor Area
1838.36 sq ft
(170.79 sq m)



Garage
Approximate Floor Area
535.39 sq ft
(49.74 sq m)

Rowland Gorrige Estate Agents
Station Approach, Seaford, East Sussex, BN25 2AR
01323 490680

hello@rowlandgorringe.co.uk
rowlandgorringe.co.uk

Note - These particulars are thought to be materially correct though their accuracy is not guaranteed and they do not form part of any contract. These details have been compiled from a visual inspection only of the property and from information given by the Vendors as being accurate to the best of their knowledge. Applicants wishing to purchase must rely on a survey on the structure and condition of the entire property and its services, and on their own Solicitor for verification of any planning consent, guarantees, and to ensure that there is clear and good legal title to the whole of the property. These details are not intended to form any part of any contract. None of the appliances mentioned in these details have been tested by the Agents nor should any measurements be relied upon and all parties are encouraged to verify these aspects prior to negotiations.

**ROWLAND
GORRIGE**