



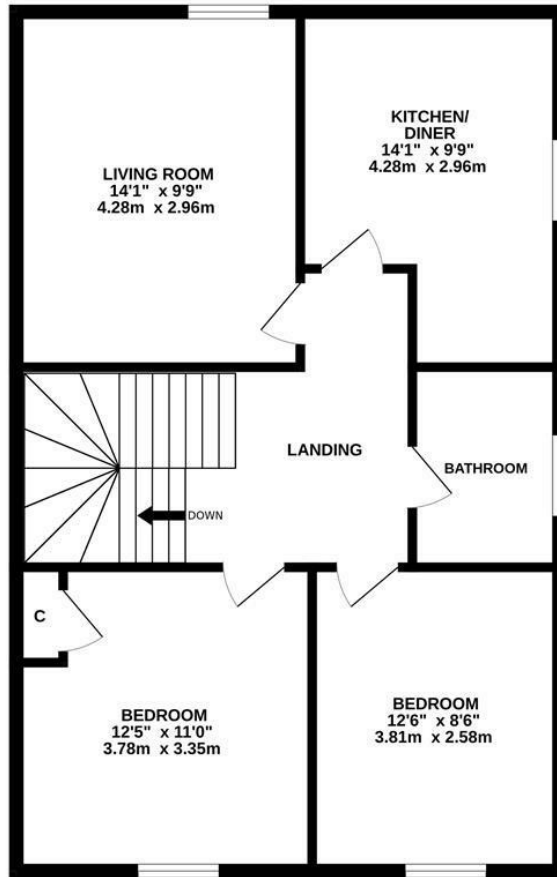
Cornwallis Gardens, Hastings TN34 1LX

Offers in excess of £185,000



A BRIGHT AND SPACIOUS two bedroom apartment spanning the UPPER FLOOR of this attractive period residence situated in an enviable position within Hastings Town centre, just a short walk from the beach, Alexandra Park, a range of local shops and a mainline railway station benefitting from connections to London stations. The well presented accommodation is arranged as a charming living room and there is a SEPARATE EAT-IN KITCHEN fitted with modern units and offering ample room for a dining table. There are TWO BEDROOMS together with a family bathroom where there is shower over the bath. The main bedroom also benefits from BUILT-IN STORAGE and there is a large loft which provides additional storage, its accessed from the hallway via a loft hatch with a pull-down ladder. Being sold with a 999 YEAR LEASE and NO ONWARD CHAIN this fantastic property would make the perfect first time home.

SECOND FLOOR
777 sq.ft. (72.2 sq.m.) approx.



TOTAL FLOOR AREA : 777 sq.ft. (72.2 sq.m.) approx.

Whilst every attempt has been made to ensure the accuracy of the floorplan contained here, measurements of doors, windows, rooms and any other items are approximate and no responsibility is taken for any error, omission or mis-statement. This plan is for illustrative purposes only and should be used as such by any prospective purchaser. The services, systems and appliances shown have not been tested and no guarantee as to their operability or efficiency can be given.
Made with Metropix ©2025

