



St. Andrews Square, W11

£825,000



- Maisonette
- Three Bedrooms

- Separate WC
- Communal Gardens

- Panoramic Garden Views
- RBKC Permit





ABOUT THE PROPERTY

Coming to the market for the first time since it was built, this exceptionally bright and well-maintained three-bedroom maisonette offers over 1,070 sq ft of internal space and a rare opportunity to secure a long-held home in a peaceful pocket of W11.

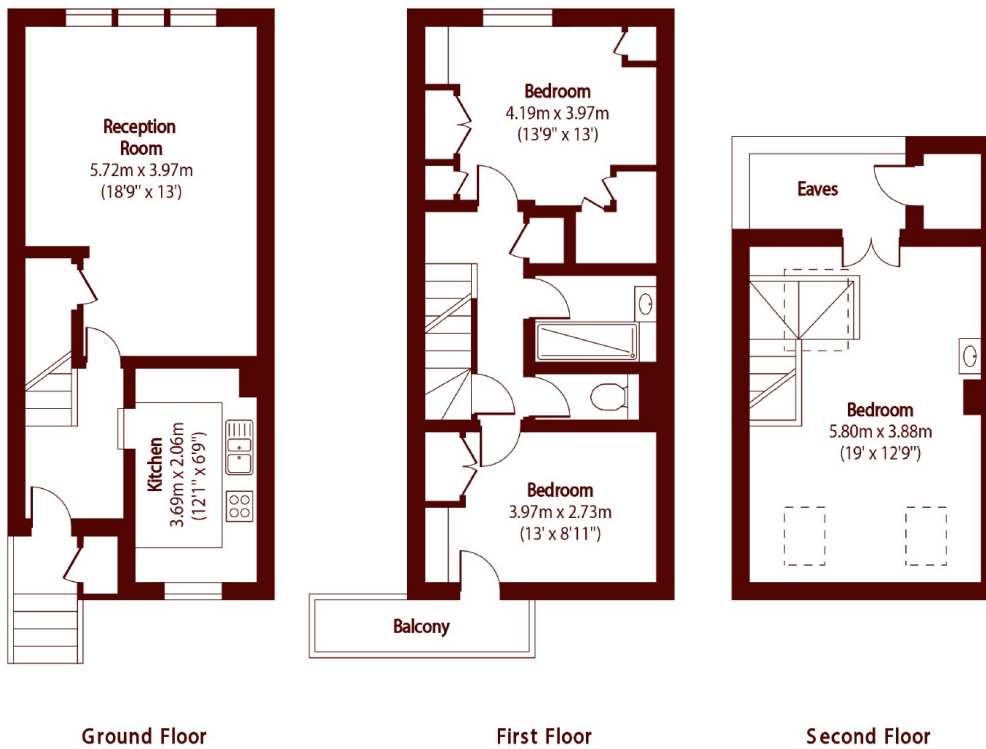
Set over three floors with its own private entrance, this well-maintained home offers space, privacy, and direct access to beautifully landscaped communal gardens. The ground floor features a bright dual-aspect reception room and a separate kitchen with great storage.

Upstairs, two double bedrooms share a bathroom and WC, with one bedroom opening onto a private balcony with green views.

The top floor hosts a large principal bedroom in the eaves with generous storage ideal as a retreat, guest room, or home office. Lovingly cared for by the original owner, the apartment offers both comfort and scope to personalise, all within a peaceful, green setting.

Just a short walk from parks, shops, and markets, with great transport links via Latimer Road and Ladbroke Grove stations. A rare opportunity for those seeking space, natural light, and long-term value in West London.





Total area (approx): 99.51 sq m (1071 sq. ft)

(Excluding Eaves)

Shared Balcony total area (approx): 3.33 sq m (36 sq. ft)

Marsh & Parsons North Kensington

136 Lancaster Road, London,
W11 1QU
020 7313 8350