



Kensington Court, W8

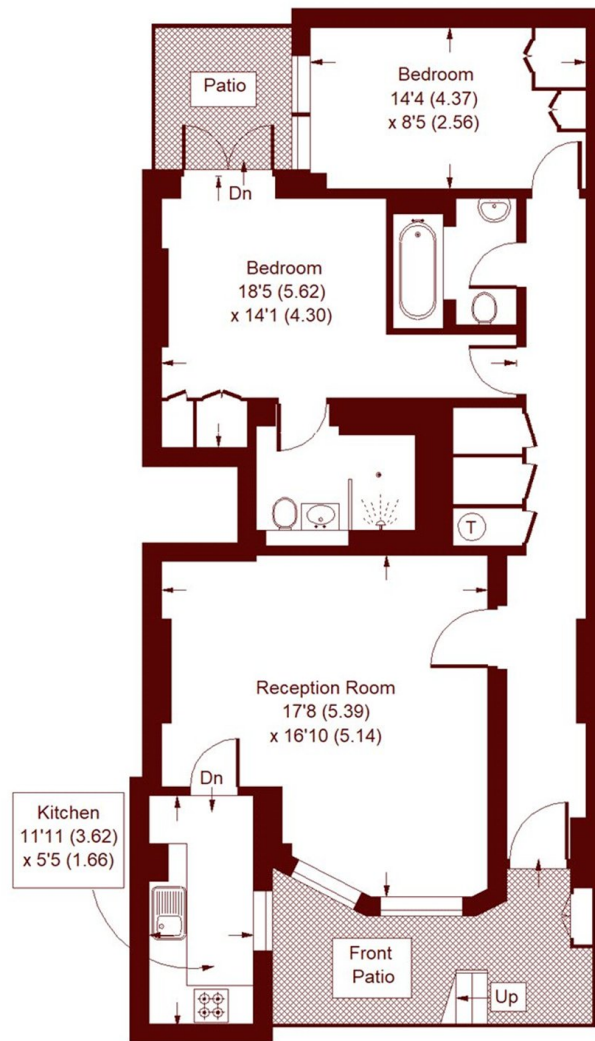
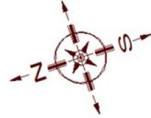
£1,175,000

2 2 1 C

- Two Bedrooms
- Principal En Suite
- Wooden Floors
- Separate Kitchen
- Patio
- Share of Freehold

Kensington Court, W8

APPROX. GROSS INTERNAL FLOOR AREA
920 SQFT / 85.5 SQM



LOWER GROUND FLOOR

Whilst every attempt has been made to ensure the accuracy of the floor plan, measurements are approximate and not to scale.
No guarantee is given on the total square footage of the property outlined on the plan. Figures given are for guidance.
Plan is for illustration purposes only; not to be used for valuations.

Marsh & Parsons Kensington

9 Kensington Church Street,
London, W8 4LF
020 7368 4450

We aim to make our particulars both accurate and reliable. However, they are not guaranteed; nor do they form part of an offer or contract. If you require clarification on any points then please contact us, especially if you're traveling some distance to view. Please note that appliances and heating systems have not been tested and therefore no warranties can be given as to their good working order.