



Let **UK** Home  
1 Bedrooms

Flat

Located in London

£498,000



[info@letukhome.co.uk](mailto:info@letukhome.co.uk)

<https://www.letukhome.co.uk/>

01795 358 886



# Flat 208 Hartingtons Court, Coster Avenue

London | | N4 2WQ

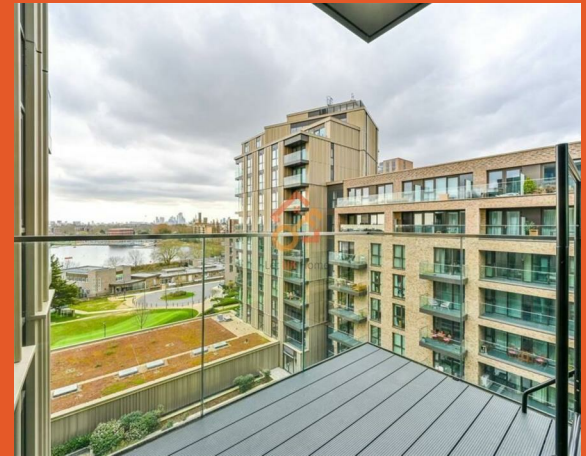
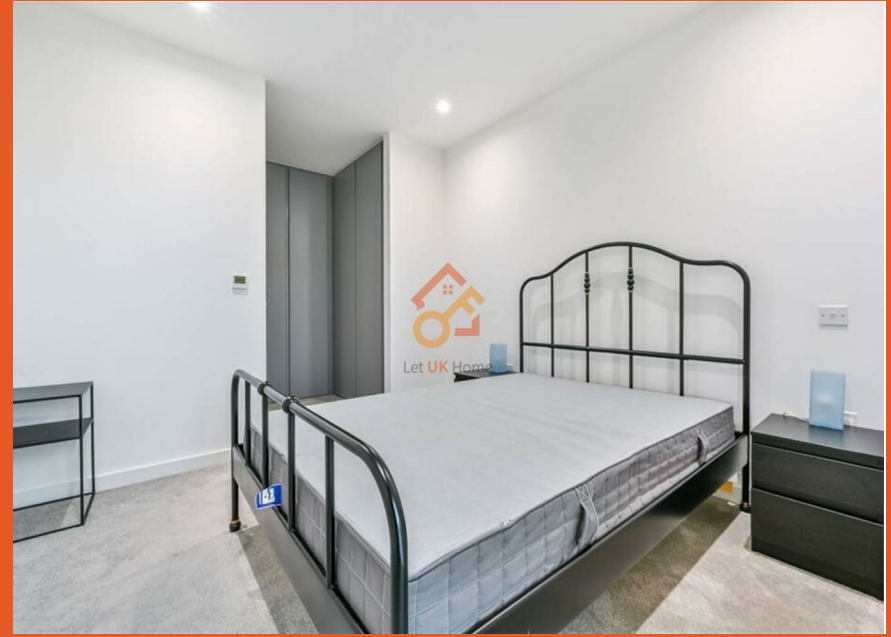


Let UK Home are excited to offer this spectacular one bedroom apartment in the Hartingtons Court, part of the Woodberry Down.

This property comprises a large bright open plan kitchen, living room and a private balcony with great views, one bedroom with a wardrobe, a large family sized bathroom and ample storage.

Residents of this exceptional development will benefit from Gym, Indoor Swimming Pool, luxurious Spa Center, hotel-style Concierge Service, Meeting Room, and Community Activity Center, etc.

The property is surrounded by abundant educational resources, with many excellent primary and secondary schools, such as Woodberry Down Community Primary School, Grazebrook Primary School, Springfield Community Primary School, Fortisemere School, The American School in London, Highgate School, etc. Thanks to the Piccadilly line nearby, one can quickly reach universities like UAL, UCL, LSE, London Fashion School, and University of Westminster from here.



# Flat 208 Hartingtons Court, Coster Avenue

£498,000 Leasehold



- 6th Floor
- Indoor Swimming Pool
- Concierge Service
- Community Activity Center
- Gym
- SPA
- Meeting Room
- EPC Rating: B







1 BED	611 sq ft	56.8 sqm
Apartment Area	558 sq ft	51.8 sqm
External Area	54 sq ft	5.0 sqm
Kitchen/Living Area	15'5" x 18'4"	4.7 x 5.6
Bedroom	9'6" x 14'9"	2.9 x 4.5
Balcony	9'2" x 5'11"	2.8 x 1.8



Let **UK** Home

3F 2 Eastbourne Terrace

Paddington

London

W2 6LG

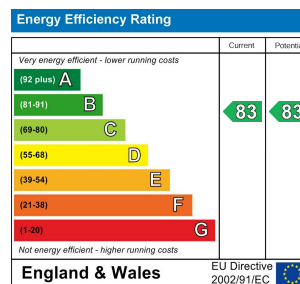
01795 358 886

info@letukhome.co.uk

**Council Tax Band: C**

**Local Authority:**

Agents Note: Whilst every care has been taken to prepare these particulars, they are for guidance purposes only. All measurements are approximate and are for general guidance purposes only and whilst every care has been taken to ensure their accuracy, they should not be relied upon and potential buyers/tenants are advised to recheck the measurements.



<https://www.letukhome.co.uk/>