



SUTHERLAND STREET  
PIMLICO

JACKSON-STOPS 

---

## SUTHERLAND STREET PIMLICO, SW1V

ASKING PRICE: £550,000

A beautifully presented Art Deco inspired garden flat located in the ever popular Pimlico Grid.

This stunning property comprises a semi open plan kitchen and reception area, which leads out onto a south westerly facing garden. There is a spacious bedroom with ample storage, a modern bathroom and it also benefits from its own front door and it is being offered with no onward chain.

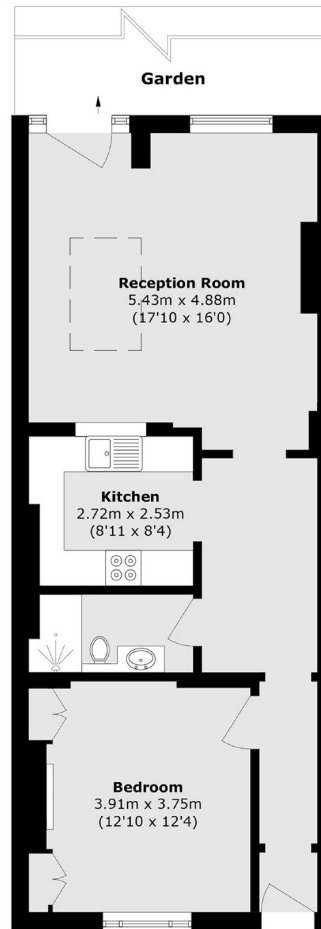
Sutherland Street is situated moments away from the shops, cafes and restaurants of Pimlico. The nearest transport links can be found at Pimlico (Victoria underground line) Victoria (Victoria, Circle and District underground lines with Mainland station and Gatwick Express) and the 360, C10 and 24 buses are a two minute walk away.

### KEY FEATURES

- Share of Freehold
- No Onward Chain
- One Bedroom
- Private Garden
- Service Charge: £3411 pa
- Sole Agent







### Lower Ground Floor

Total area (approx.): 64.4 sq. m (693.2 sq. ft)

Energy Rating: D. We aim to make our particulars both accurate and reliable. However they are not guaranteed; nor do they form part of an offer or contract. If you require clarification on any points then please contact us, especially if you are travelling some distance to view. Please note that appliances and heating systems have not been tested and therefore no warranties can be given as to their good working order.

ASKING PRICE: £550,000

PIMLICO

020 7828 4050

pimlicosales@jackson-stops.com

jackson-stops.co.uk

JACKSON-STOPS 