



HUDDLESTONE ROAD, NW2

£475,000

This charming apartment is situated on the first floor of a recently converted church building, arranged over almost 700sqft comprising a spacious, kitchen/reception room with integrated appliances and breakfast

Two Bedrooms

Beautiful Church Conversion

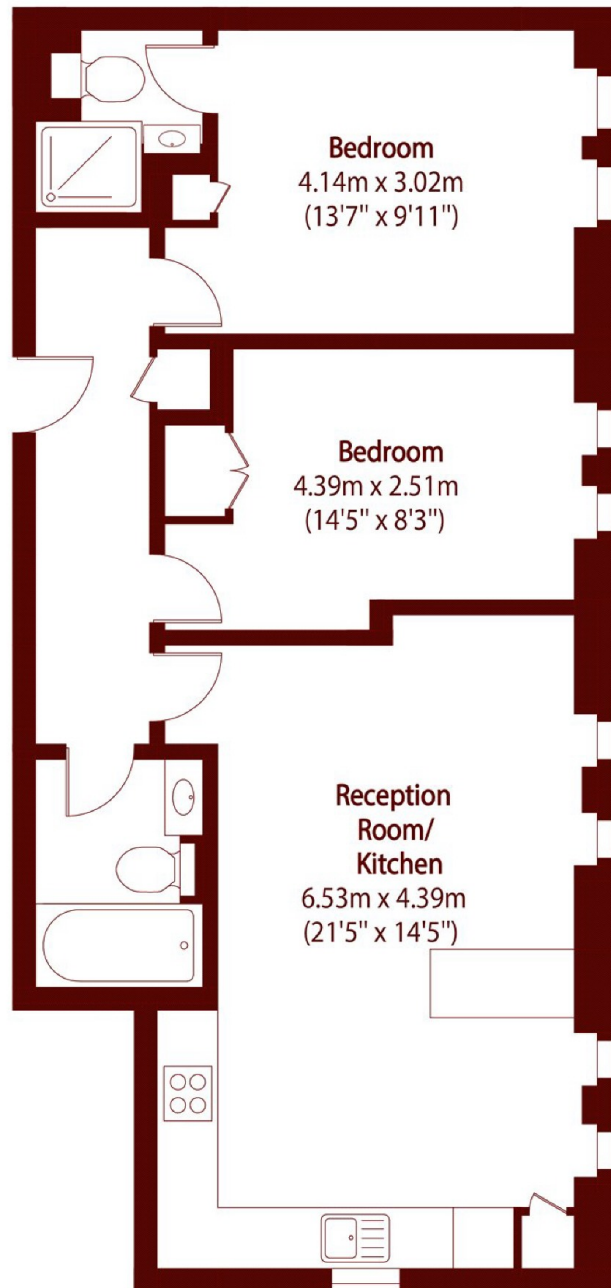
Superb Finish Throughout

Charming Period Features

Almost 700 sq ft

Bespoke Development

STEP INSIDE HUDDLESTONE ROAD



Total area (approx): 64.84 sq m (698 sq. ft)

Willesden Green
020 8451 0420

Energy Rating: B We aim to make our particulars both accurate and reliable. However, they are not guaranteed; nor do they form part of an offer or contract. If you require clarification on any points then please contact us, especially if you're traveling some distance to view. Please note that appliances and heating systems have not been tested and therefore no warranties can be given as to their good working order

**MARSH &
PARSONS**