



Rosecroft Avenue

Hampstead, NW3

£3,100 per month
(£715.38 per week)

VIDEO TOUR AVAILABLE. An exceptional 1/2 bedroom duplex apartment over the top 2 floors of an Edwardian detached house situated in the popular Crofts, walking distance to shops and restaurants of Hampstead Village (Northern Line) and within close proximity to amenities of Finchley Road (Jubilee Line). The property boasts cork floors, a decked balcony with far reaching views across to the City, distributed satellite system and spacious storage room under the eaves. The entrance is on the 1st floor and comprises an ultra modern wet room with under floor heating, utility cupboard with washer/dryer 2nd floor: reception room with French doors leading to the decked terrace, dining area, separate seating area under the eaves, open plan fully fitted kitchen with Neff/Bosch appliances, double bedroom with en-suite bathroom with under floor heating, study/2nd bedroom off the reception room. Sole Agent.

CHESTERTONS



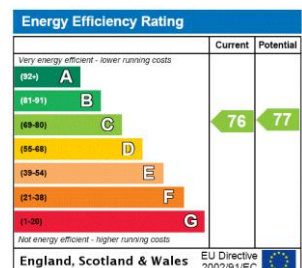
Rosecroft Avenue

Hampstead, NW3

- Exceptional Duplex Apartment in Edwardian Building
- 1/2 Bedrooms, 2 Bathrooms, Reception, Open Plan Kitchen
- Decked Balcony, Distributed Satellite System, Storage Room Under the Eaves
- Situated in the Popular Crofts, Short Walk to Hampstead Village, Walking Distance to Amenities of Finchley Road



Deposit Required: £3,576.92
Local Authority: London Borough Of Camden
Council Tax Band: E
EPC Rating: E
Unfurnished

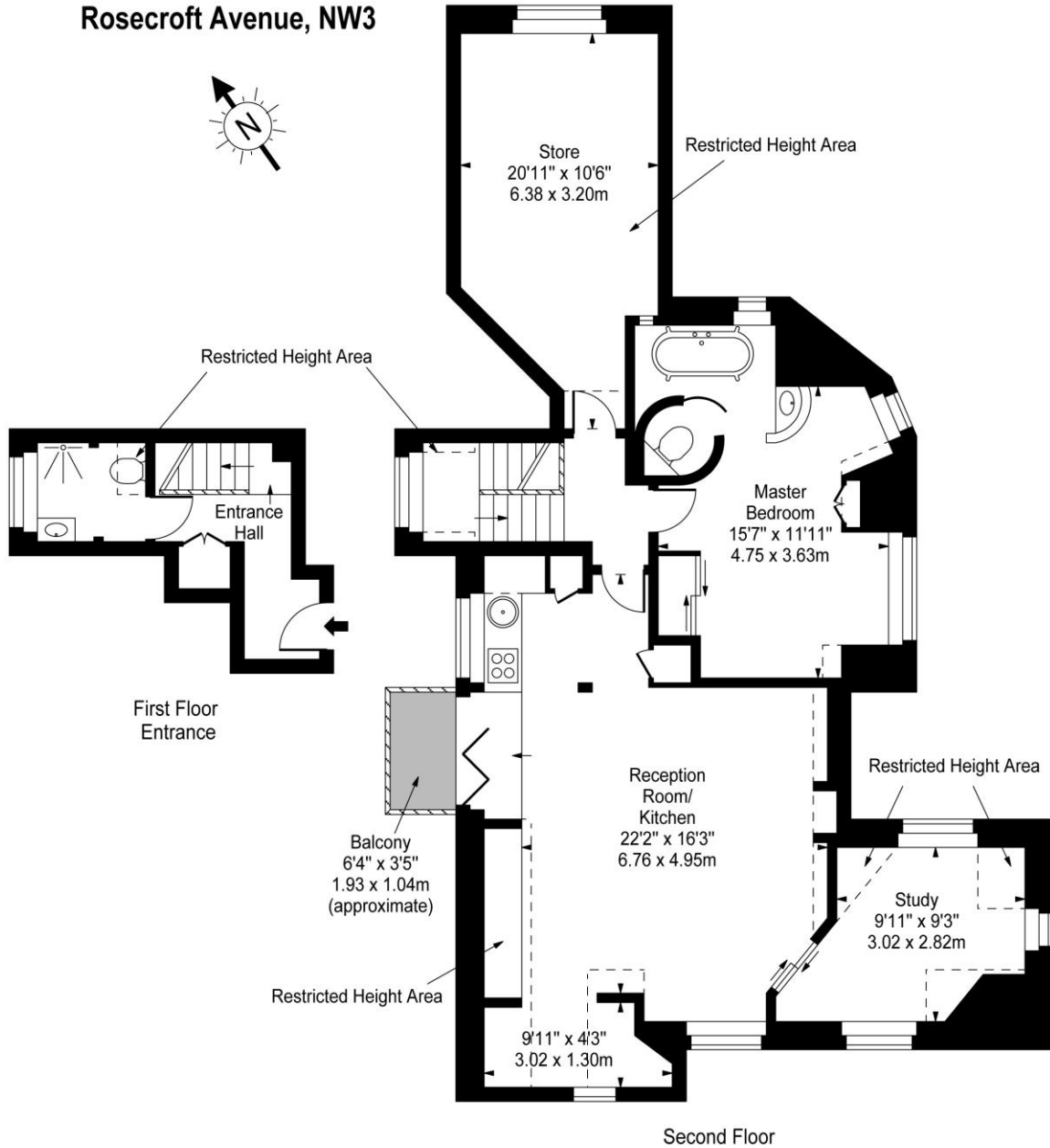


Chestertons Hampstead Lettings

55-56 Hampstead High Street
 Hampstead
 London
 NW3 1QH
hampsteadlettingsusers@chestertons.co.uk
 02077941125
chestertons.co.uk

Additional tenant charges apply (fees apply to non-AST tenancies only)
 Tenancy Agreement Fee: £300
 References per Tenant/Guarantor: £60
 Inventory check (approx. £100 – £250 inc. VAT)
chestertons.co.uk/property-to-rent/applicable-fees

Rosecroft Avenue, NW3



Second Floor

Approx Gross Internal Area **1093 Sq Ft - 101.54 Sq M**

(Including Restricted Height Area)

For Illustration Purposes Only - Not To Scale

www.goldlens.co.uk

Prepared for Chestertons

Ref. No. 006139J

