

For Rent



People Make Places



Shaftesbury Avenue, Chinatown W1

2 bedrooms | 667 sq ft

£825 pw



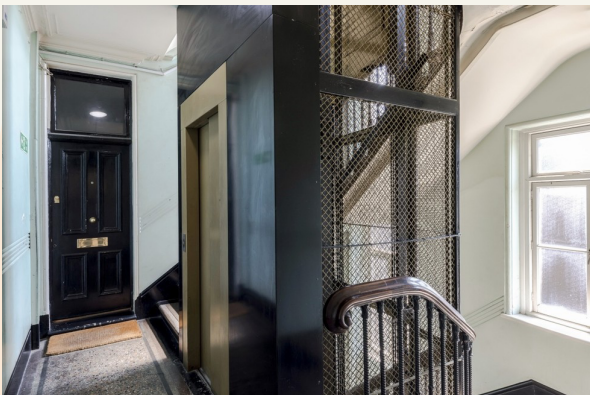


Perfect for two sharers, this two bedroom and two shower room apartment is in a charming mansion block in Chinatown on the edge of Soho. With high ceilings, original features and secondary glazing while modern in design with wooden floors and contemporary fittings. Available unfurnished from mid-June.

What you need to know

- Two double bedrooms
- Two shower rooms
- Open plan kitchen reception room
- High ceilings
- Secondary glazing
- Unfurnished
- Available mid-June
- Wood floors
- Close to Piccadilly Circus & Leicester Square tube stations
- Charming mansion block





Overview

Boasting high ceilings and decorative fireplaces reflecting the charm of the period mansion block it is positioned in, this two bedroom apartment is on the first floor. Having been refurbished to a modern style with wooden floors, neutral white walls and contemporary shower rooms with white brick style tiles set off with dark grey grouting. Both bedrooms are double in size and have useful fitted storage. The master has an ensuite shower room while a guest shower room is accessible from the hallway. A stylish white kitchen is open plan to the living space and secondary glazing is fitted for tenant comfort.

Several transport options are within reach of this apartment. Positioned between Piccadilly Circus (Piccadilly and Bakerloo Lines) and Leicester Square (Northern and Piccadilly Lines) Underground Stations, although Tottenham Court Road (Central, Northern and Elizabeth Lines) is also within walking distance for travel to the City and out of London. Several bus routes operate on Shaftesbury Avenue itself.

The apartment from early June on an unfurnished basis.
Westminster Council tax band: G.



Shaftesbury Avenue, Chinatown W1

People Make Places

London is a collection of inspiring urban villages and one of the most exciting places in the world to live, work & play.

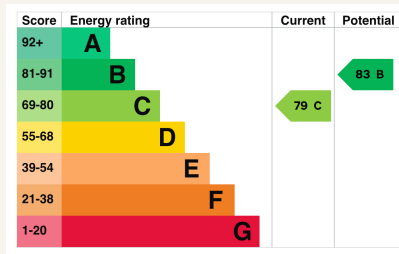
We work with both property owners and their occupiers, sharing the story of these vibrant neighbourhoods, conveying the unique soul & energy to future custodians, the people who'll keep them buzzing.

And unlike many real estate businesses we're not just about buildings, because streets & buildings don't make a neighbourhood.

We're about building relationships, because **people make places**.

MISINTERPRETATION ACT [COPYRIGHT] DISCLAIMER: Tavistock Bow Ltd for themselves and for the vendor(s) of this property whose agents they are, given notice that: 1. These particulars do not constitute, nor constitute any part of, an offer or contract. 2. None of the statements contained in these particulars as to the property are to be relied on as statements or representations of fact. 3. Any intending purchaser or lessee must satisfy themselves by inspection or otherwise as to the correctness of each of the statements contained in these particulars. 4. The vendor(s) or lessor(s) do not make or give and neither Tavistock Bow Ltd nor any person in their employment has any authority to make or give any representation or warranty whatever in relation to this property. Finance Act 1989, Unless otherwise stated all prices and rents are quote exclusive of VAT. Property Misrepresentation Act 1991; These details are believed to be correct at the time of compilation but may be subject to subsequent amendment.

Follow us:     @tavistockbow

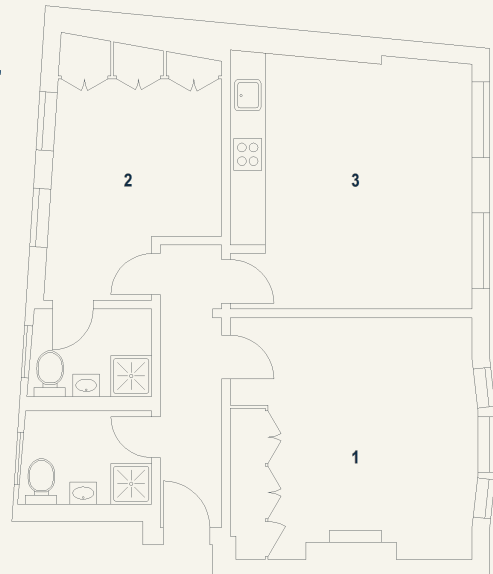


Exeter Mansions, W1

Approximate Gross Internal Area 62 sq m / 667 sq ft

Second Floor

- 1 Bedroom
4.25 x 4.13M
13'11" x 13'7"
- 2 Bedroom
4.62 x 2.89M
15'2" x 9'6"
- 3 Kitchen /
Reception
Room
4.35 x 4.17M
14'3" x 13'8"



Floor Plan produced for Tavistock Bow by Mays Floorplans ©. Tel 020 3397 4594
Illustration for identification purposes only, not to scale.

tavistockbow

21 New Row, Covent Garden,
London, WC2N 4LE

t: 020 7477 2177
e: hello@tavistockbow.com
w: tavistockbow.com

Shaftesbury Avenue, Chinatown W1

