

Andrews Road, Southwater

Offers Over £375,000

3 1 1



An impressive Three Double Bedroom Home located in a Popular Village, offering exciting Potential To Improve or Extend (stpp) and No Onward Chain.

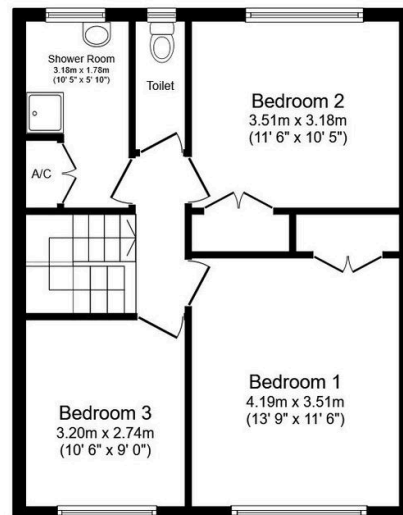
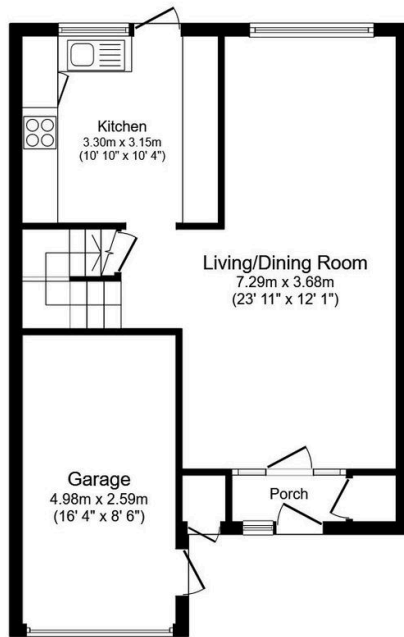
Tenure: Freehold

Council Tax: Band D

EPC Rating: Current E - Potential C

Key Features

- Watch Our Video Tour
- No Onward Chain
- 16ft Garage & Driveway Parking
- Generous Rear Garden
- Excellent Storage
- Three Double Bedrooms
- 23ft Living/Dining Room
- Potential To Improve/Extend (stpp)
- Popular Village Location
- Spacious Family Home



Total floor area: 107.3 sq.m. (1,155 sq.ft.)

This floor plan is for illustrative purposes only. It is not drawn to scale. Any measurements, floor areas (including any total floor area), openings and orientations are approximate. No details are guaranteed, they cannot be relied upon for any purpose and do not form any part of any agreement. No liability is taken for any error, omission or misstatement. A party must rely upon its own inspection(s). Powered by www.Propertybox.io