



Shooters Hill Road, SE3

£450,000

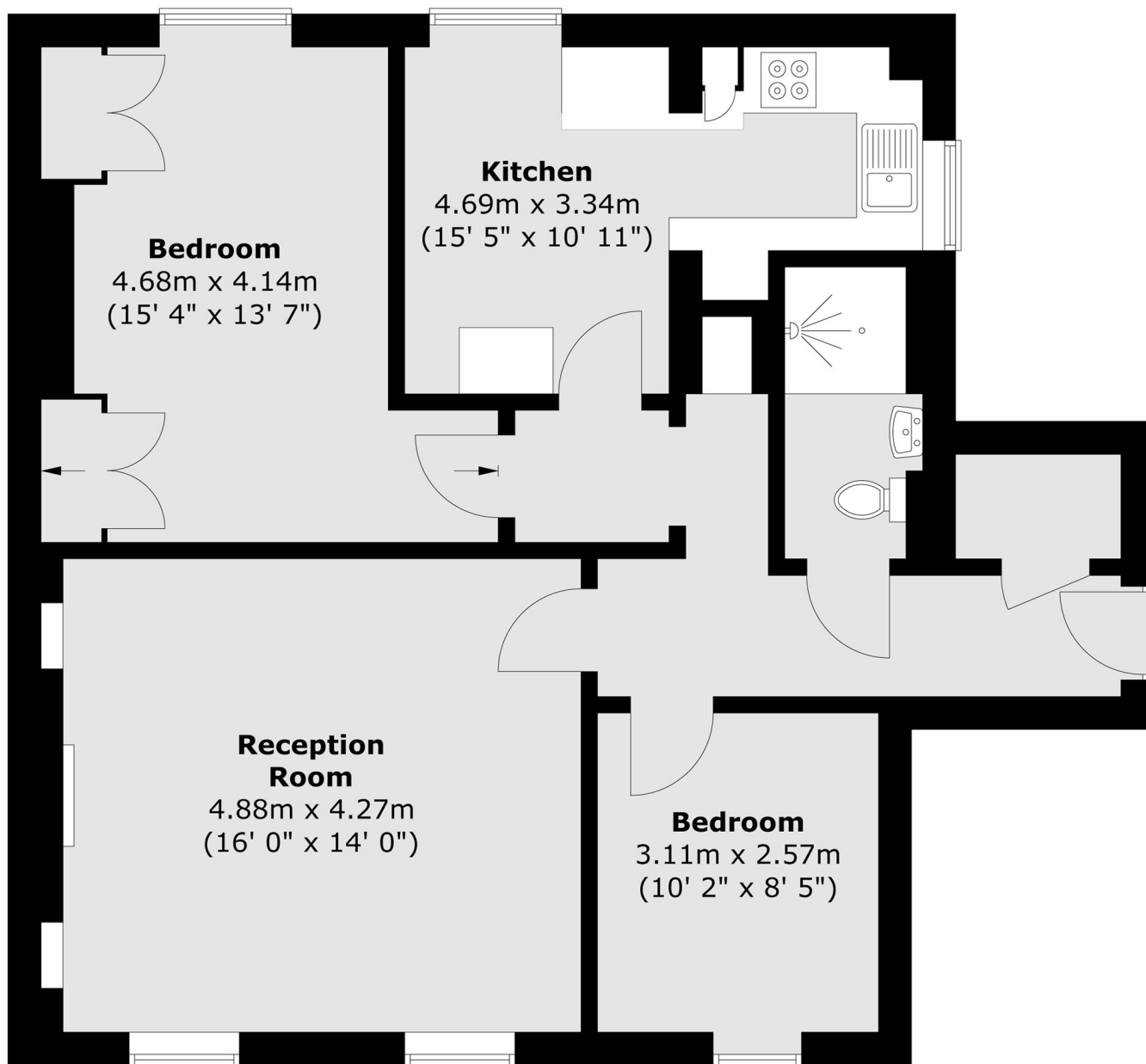
Bright and spacious ground floor conversion flat with its own private front door, offered with no onward chain. The property benefits from two well-proportioned double bedrooms, a large reception room with high ceilings and an original fireplace, and a separate kitchen. Both the kitchen and bathroom are presented in good condition throughout. Additional features include off-street parking and attractive period features, with the flat offering a great sense of space and natural light.

Situated in an excellent position, minutes from the Heath and close to Blackheath Royal Standard for its shops, cafés and amenities. There is a regular bus route to North Greenwich Jubilee line, and the property is in close proximity to both Blackheath and Westcombe Park Station.

Features

- Ground Floor
- Two Bedroom
- Minutes From The Heath
- Own Front Door
- Close To Shops & Transport
- Off Street Parking

Shooters Hill Road, London, SE3



Total area (approx.) : 75.1 sq. m (808 sq. ft)