



MEADPROPERTY



**4 Fairford Road, Maidenhead, Berkshire, SL6 7AL Asking Price: £475,000**

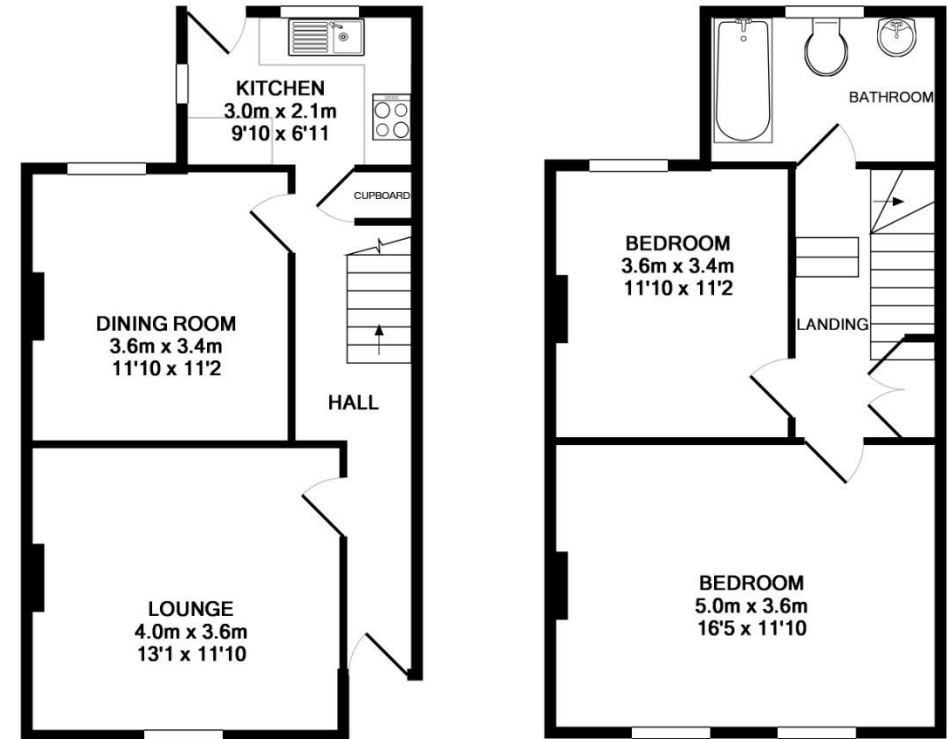
# 4 Fairford Road, Maidenhead, Berkshire, SL6 7AL

An older style semi-detached house located on an established residential road within comfortable walking distance of the town and station. The property, which offers great potential to extend, has a generous rear garden and the option to create off street parking (subject to the necessary permission).

The M4 motorway is easily accessible providing access to Heathrow and Central London. Rail services to London Paddington are available from Maidenhead Station with an excellent service to London Paddington, serviced by the Elizabeth Line. - No onward chain.

## Accommodation & Amenities

- 2 BEDROOM OLDER STYLE SEMI.
- SHORT WALK TO TOWN AND STATION.
- GENEROUS REAR GARDEN.
- SPACIOUS FIRST FLOOR BATHROOM.
- POTENTIAL TO EXTEND.
- NO ONWARD CHAIN.



GROUND FLOOR

1ST FLOOR

TOTAL APPROX. FLOOR AREA 87.0 SQ.M. (936 SQ.FT.)

Whilst every attempt has been made to ensure the accuracy of the floor plan contained here, measurements of doors, windows, rooms and any other items are approximate and no responsibility is taken for any error, omission, or mis-statement. This plan is for illustrative purposes only and should be used as such by any prospective purchaser. The services, systems and appliances shown have not been tested and no guarantee as to their operability or efficiency can be given

Made with Metropix ©2019



