

HUNTERS®

HERE TO GET *you* THERE

Albert Hill, Settle

Price £450,000

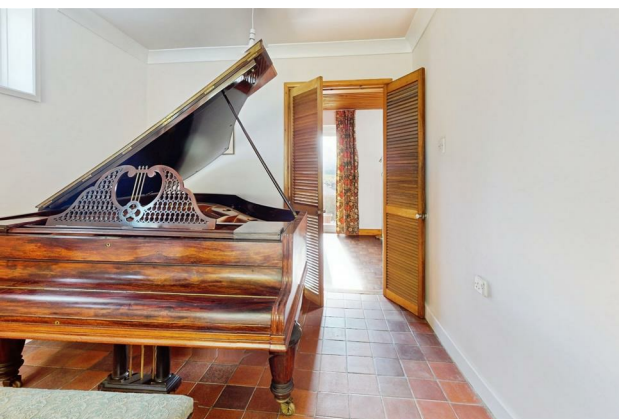
Property Images



HUNTERS®

HERE TO GET *you* THERE

Property Images



HUNTERS®

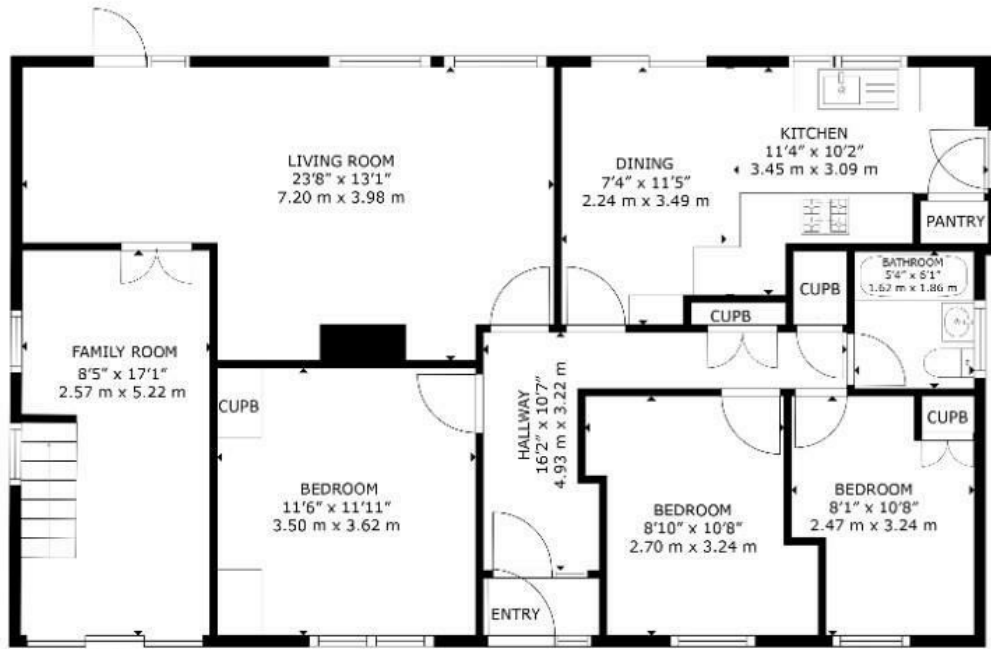
HERE TO GET *you* THERE

Property Images

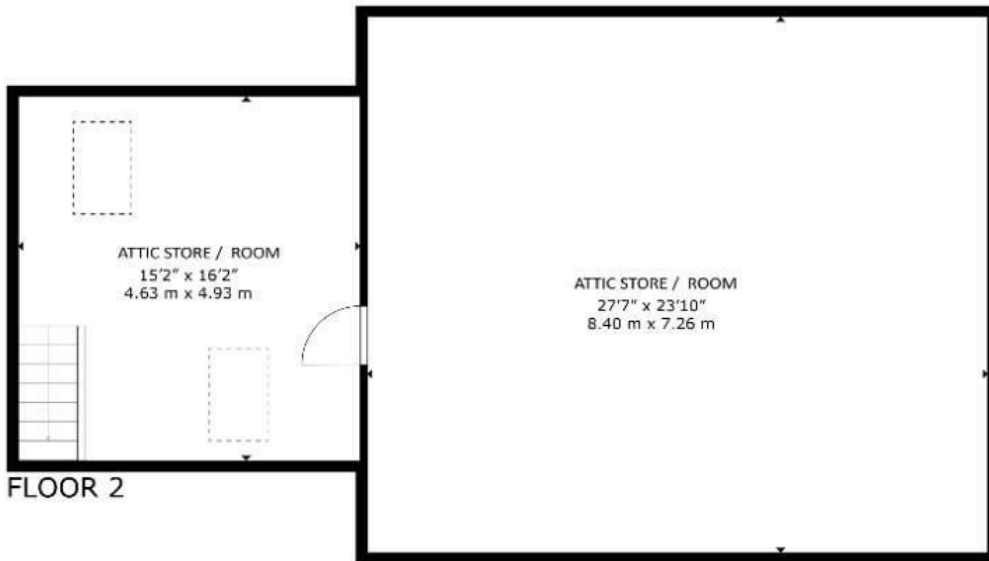


HUNTERS®

HERE TO GET *you* THERE



FLOOR 1



FLOOR 2

SIZES AND DIMENSIONS ARE APPROXIMATE, ACTUAL MAY VARY.



Energy Efficiency Rating		Current	Potential
Very energy efficient - lower running costs			
(92 plus)	A		
(81-91)	B		
(69-80)	C		
(55-68)	D	64	71
(39-54)	E		
(21-38)	F		
(1-20)	G		
Not energy efficient - higher running costs			
England & Wales	EU Directive 2002/91/EC		



Set in the charming market town of Settle, this delightful detached bungalow on Albert Hill offers a unique opportunity to enjoy the stunning vistas of the Yorkshire Dales.

With an elevated position, the property boasts breathtaking views from its principal rooms, making it a perfect retreat for those who appreciate natural beauty.

The bungalow features a spacious living room with stunning views, and a family / music room, providing ample space for relaxation and entertaining. There are three bedrooms, ensuring comfort for family and guests alike. The re-fitted dining-kitchen is a highlight, complete with sliding doors that open onto the gardens, seamlessly blending indoor and outdoor living, and a bathroom with shower over bath.

The property has scope for extending and modernising. and the steel frame construction is visible in the attic rooms, and in excellent condition. Buyers should note that mortgages are available on steel and timber frame properties. Your choice of lenders may be a little more limited.

The gardens are a delight with terraced well planned terraced gardens to the front with fine views, gardens to either side laid to lawn, and a long driveway across the back leading to the single garage.

Parking is a breeze with space for up to four vehicles, in addition to a single garage, making this property both practical and convenient. Located just a five-minute walk from the town centre, train station, and local shops, you will find everything you need within easy reach.

With no forward chain, this bungalow is ready for you to make it your own. Whether you are looking for a peaceful home or a project to enhance, this property in Settle is a rare find that combines comfort, potential, and stunning surroundings.

Set in the charming market town of Settle, this delightful detached bungalow on Albert Hill offers a unique opportunity to enjoy the stunning vistas of the Yorkshire Dales.

With an elevated position, the property boasts breathtaking views from its principal rooms, making it a perfect retreat for those who appreciate natural beauty.

On-Line-Bullet-Points

- Stunning views over Settle
- On the edge of town
- Parking for 4 vehicles
- Single garage
- Re-fitted dining-kitchen
- Large attic with potential to convert
- No forward chain
- 5 mins to town centre & trains
- Viewing recommended
- The Yorkshire Dales National Park