



FLAT 3 2-3 THE SQUARE Spacious Two Bedroom Flat
O.I.R.O £110,000
HOLSWORTHY

MILLER TOWN & COUNTRY
Part of Smart Property Group



- » Well Presented First Floor Flat
- » Recently Refurbished
- » 2 Double Bedrooms
- » Open Plan Living Space
- » Modern Fitted Kitchen
- » Bathroom/WC
- » Central Town Location

The Property



The flat is accessed via a communal entrance hall shared with two other flats and a private door leads into a light and airy entrance hall leading to a spacious living room, enjoying a southerly aspect and commanding views over the town square with separate modern fitted kitchen, incorporating oven and hob, full height fridge/freezer and washing machine. At the far end of the flat are two double bedrooms and there is also a modern bathroom/WC with electric shower over the bath and glazed screen.



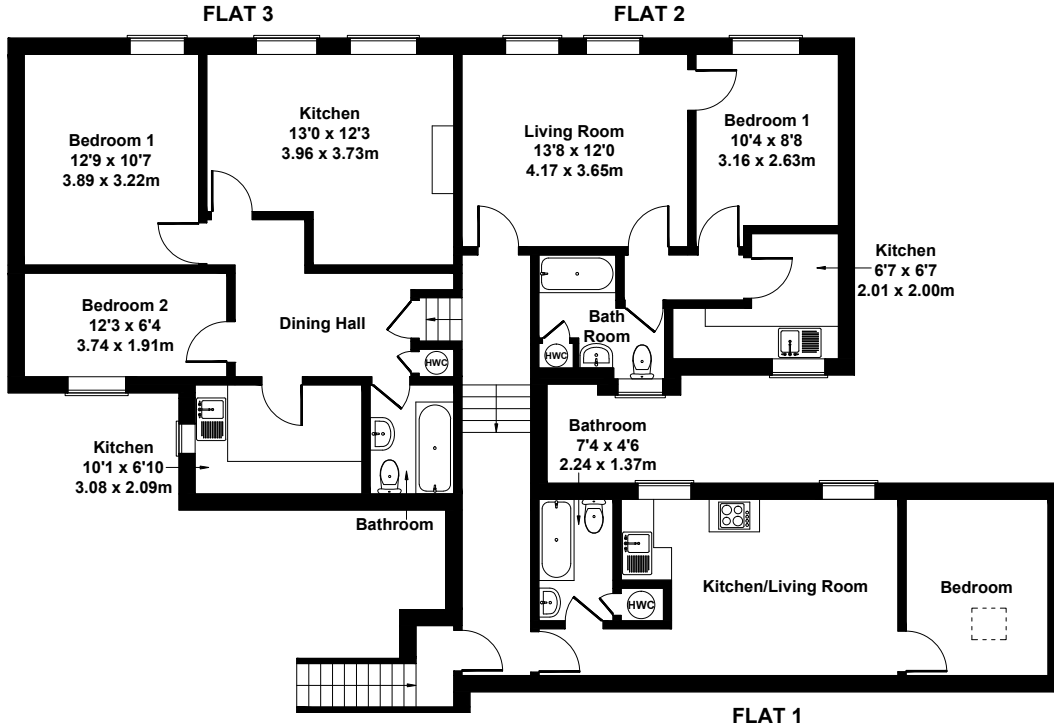
Outside

Although there is no private outdoor space with the flat it is close to several green spaces within the town and is a short walk for the town's lovely park.



Flats 1,2 & 3 at 2-3 The Square

Approximate Gross Internal Area
1475 sq ft - 137 sq m












Not to Scale. Produced by The Plan Portal 2026
For illustrative purposes only.

Location

Situated in the heart of town enjoying a southerly aspect over the towns square one can sit back in an elevated location and enjoy watching the world go about its business. Within a stones throw of the flat are a wide range of retail outlets, bars, cafés and takeaways/eateries. Holsworthy is a popular market town only 20 minutes drive from the north town of Bude which offers access to some beautiful coastal walks and sandy beaches famed for their excellent surf.

KEY INFORMATION

-  2 Bedrooms
-  1 Bathroom
-  1 Reception Room
-  On street or nearby car parks
-  Not Listed
-  Heating: Electric
-  Utilities: Mains electric, water and drainage
-  Restrictions: None known
-  Easements, Wayleaves: None known
-  Public Rights of Way: None
-  Flooding: None known
-  Notable Construction Materials: None known
-  Building Safety Concerns: None known
-  Mining Area: No
-  Planning Permission / Proposed Developments: None known
-  EPC Rating: E (50)
-  Council Tax Band: A
-  Tenure: Leasehold
-  Broadband: FTTC *Per Ofcom
-  Mobile Signal: Good *Per Ofcom
-  Not suitable for wheelchair users

Miller Town & Country

01837 54080 | okehampton@millerc.co.uk

www.millerc.co.uk

2 Jacob's Pool House, 11 West Street,
Okehampton, Devon, EX20 1HQ



VIEWING: Strictly through the
vendor's sole agents

Tavistock 01822 617243
Okehampton 01837 54080

CONSUMER PROTECTION FROM
UNFAIR TRADING REGULATIONS
2008:

These particulars are believed to
be correct but their accuracy is not
guaranteed nor do they form part of
any contract.

