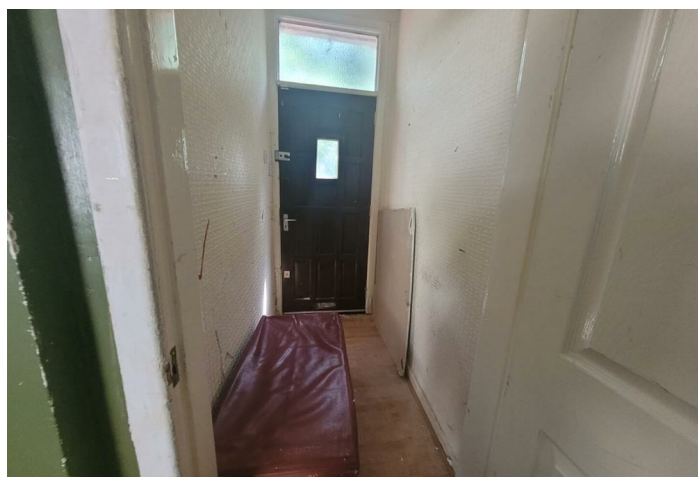
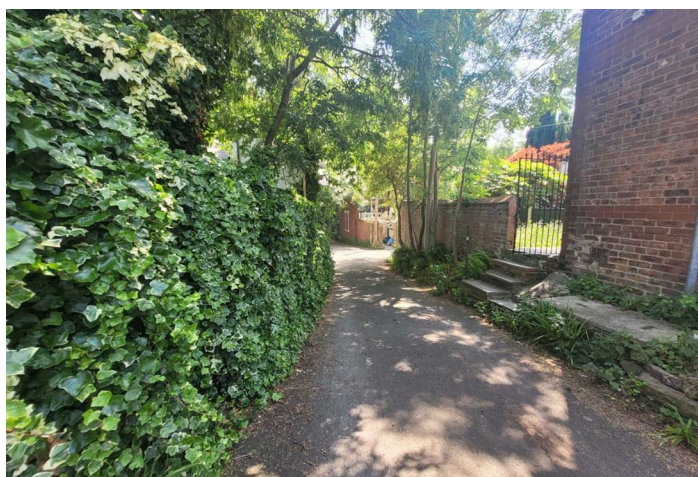




Brookfield Grove , Manchester, M18 7FD

- 3 spacious bedrooms
- Cosy reception room
- 872 sq ft living space
- Close to local amenities
 - Ideal for families
- 1 modern bathroom
- Terraced house style
- Located in Brookfield Grove
- Easy access to transport links
- Viewing recommended



Local Authority
Council Tax Band **B**
EPC Rating **D**



Smartsale4u Office

Suite 331 Kemp House, 152-160 City
Road, London, EC1V 2NX

Contact

0204 572 9091
info@smartsale4u.co.uk
smartsale4u.co.uk

Agents Note: Whilst every care has been taken to prepare these particulars, they are for guidance purposes only. All measurements are approximate and for general guidance purposes only and whilst every care has been taken to ensure accuracy, they should not be relied upon and potential buyers/tenants are advised to recheck the measurements.