



**DOUGLAS & SIMMONS**

Apartment 10, Fleur-de-Lis, 15 Church Street, Wantage, Oxfordshire OX12 8GE

# Apartment 10, Fleur-de-Lis, 15 Church Street, Wantage, Oxfordshire, OX12 8GE

## Guide Price £310,000 Leasehold

Nestled in the heart of Wantage on Church Street, Fleur-de-Lis Wantage presents an exceptional opportunity for those seeking a luxurious retirement lifestyle.

- An exclusive development of 32 beautifully appointed 1 & 2 bedroom apartments for the over 60's
- Stunning 2 bed or 2 reception room, 2 bathroom, ground floor apartment
- Parking available (subject to permit availability)
- c.855 sq ft of highly specified accommodation
- Pets permitted (subject to approval)
- Energy efficient home
- Fabulous communal facilities
- On site Lifehost Mon - Fri
- No onward chain
- Constructed in 2017 by Renaissance Homes (Now Pegasus Homes)



### LOCATION

Award winning Wantage is an attractive market town, renowned for its association with King Alfred the Great. Situated at the foot of the outstanding ancient Ridgeway trail and Lambourn Downs, Wantage offers a comprehensive range of amenities, including major high street retailers Waitrose and Sainsburys; a plethora of shops, leisure/health and well-being facilities, banks, post office and recreational facilities; a museum, coffee shops, bistros, gift and clothing boutiques, pubs, restaurants, community clubs and organisations as well as the popular weekly market in the square itself and regular farmers' market. Wantage has excellent road links to the A34 via the A417, which in turn leads north to Abingdon c.10 miles, Oxford c.17 miles (M40), alternatively south (M4) J14 c.9.4 miles. Didcot situated to the east benefits from a main line train station to London (Paddington c.45mins).

## DESCRIPTION

This age-exclusive community is designed for individuals aged 60 and over, offering a harmonious blend of independence and support.

The property features a versatile and well-appointed two-bedroom apartment, (one bedroom can be reconfigured as a dining room as is shown), boasting a generous c.855 square feet of living space.

The high-spec kitchen is equipped with fully integrated Neff appliances and elegant Silestone worktops. The main bedroom is complemented by an en suite shower room and there is also an additional shower room, ensuring comfort and convenience for residents and guests alike.

The living room is a welcoming space, enhanced by French doors that open onto a private patio, perfect for enjoying the tranquil surroundings. Residents can take advantage of the thriving owners' lounge, which is often the hub of social activity, hosting quiz nights and various events. The communal areas are beautifully landscaped, providing a serene environment for relaxation and socialising.

The development also prioritises safety and peace of mind, with a 24-hour emergency care line and the presence of an on-site Life host Monday - Friday. For those who wish to have family visit, guest suites are available, ensuring that loved ones can stay comfortably.

This retirement property is pet-friendly, allowing residents to bring their furry companions, subject to prior approval. Additionally, on-site parking is available through a permit agreement, subject to availability.

In summary, Fleur-de-Lis Wantage offers a unique opportunity for a vibrant and fulfilling retirement lifestyle, combining luxury, community, and independence in a picturesque setting.

### OTHER INFORMATION

Annual service charge and ground rent TBA.

EER-B.

Long lease remaining of 241 years (250 from new).

Mains water, drainage and electricity connected.

## FLOOR AREA

855.00 sq ft

Vale of White Horse District Council

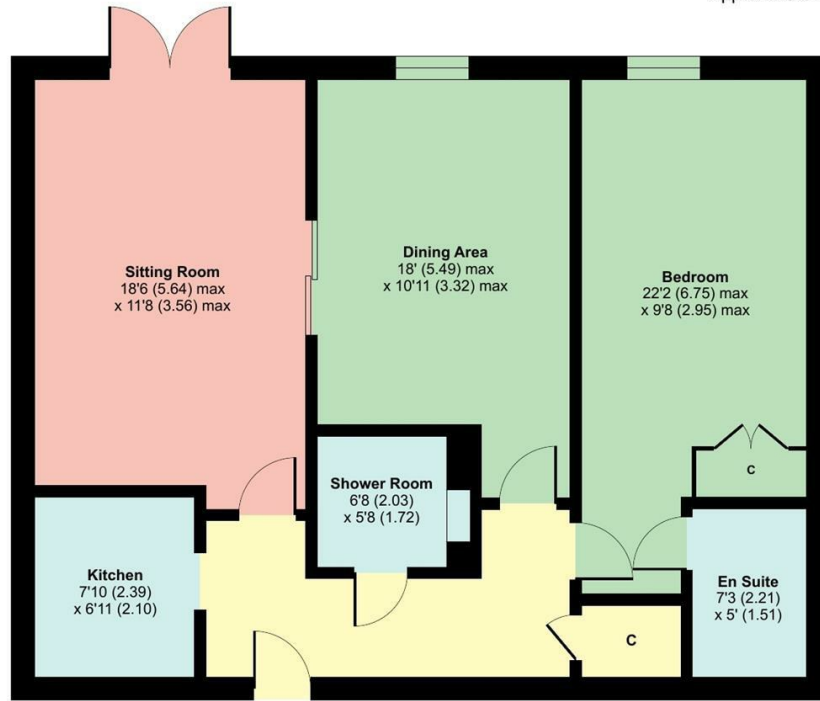
COUNCIL TAX BAND C



# Church Street, Wantage, OX12

Approximate Area = 855 sq ft / 79.4 sq m

For identification only - Not to scale



GROUND FLOOR

Floor plan produced in accordance with RICS Property Measurement 2nd Edition, Incorporating International Property Measurement Standards (IPMS2 Residential). © n3checom 2026. Produced for Douglas and Simmons Ltd. REF: 1466095

| Energy Efficiency Rating                    | Current                 | Potential |
|---|-------------------------|-----------|
| Very energy efficient - lower running costs |                         |           |
| (92 plus) A                                 |                         |           |
| (81-91) B                                   | 84                      | 84        |
| (69-80) C                                   |                         |           |
| (55-68) D                                   |                         |           |
| (39-54) E                                   |                         |           |
| (21-38) F                                   |                         |           |
| (1-20) G                                    |                         |           |
| Not energy efficient - higher running costs |                         |           |
| England & Wales                             | EU Directive 2002/91/EC |           |

| Environmental Impact (CO <sub>2</sub> ) Rating                  | Current                 | Potential |
|---|-------------------------|-----------|
| Very environmentally friendly - lower CO <sub>2</sub> emissions |                         |           |
| (92 plus) A   |                         |           |
| (81-91) B   |                         |           |
| (69-80) C   |                         |           |
| (55-68) D   |                         |           |
| (39-54) E   |                         |           |
| (21-38) F   |                         |           |
| (1-20) G  |                         |           |
| Not environmentally friendly - higher CO <sub>2</sub> emissions |                         |           |
| England & Wales   | EU Directive 2002/91/EC |           |

## DIRECTIONS TO OX12 8GE

From Wantage town centre exit via Newbury Street and take the first turning into Church Street, continue for a short distance where the development can be found on the left.

Notice is given that all curtains, carpets, blinds, equipment, light fittings and fixtures, fitted or not are deemed to be removable by the Vendor unless specifically itemised in the sales particulars.

### Important Notice

Douglas and Simmons for themselves and for the Vendors of this property, whose agents they are, given notice that:-

1. The particulars are intended to give a fair and substantially correct overall description for the guidance of intending purchasers and do not constitute part of an offer or contract. Prospective purchasers and lessees ought to seek their own professional advice.
2. All descriptions, dimensions, areas, reference to condition and necessary permissions for use and occupation and other details are given in good faith, and are believed to be correct, but any intending purchasers should not rely on them as statements or representations of fact, but must satisfy themselves by inspection or otherwise as to the correctness of each of them.
3. No person in the employment of Douglas and Simmons has any authority to make or give any representations or warranty whatever in relation to this property on behalf of Douglas and Simmons, nor enter into any contract on behalf of the Vendor.
4. No responsibility can be accepted for any expenses incurred by intending purchasers in inspecting properties which have been sold, let or withdrawn.
5. All measurements are approximate. GRD/rd 06.2026

While we endeavour to make our sales particulars accurate and reliable if there is any point which is of particular importance to you, please contact this office and we will be pleased to check the information for you, particularly if contemplating travelling some distance to view the property.

Viewing strictly by appointment with the agents  
Douglas and Simmons

www.  
the  
londonoffice.co.uk  
40 ST JAMES'S PLACE SW1



25 Market Place  
Wantage  
Oxfordshire  
OX12 8AE  
Tel: 01235 766222  
email: sales@douglasandsimmons.co.uk  
www.douglasandsimmons.co.uk

26 Market Place  
Wantage  
Oxfordshire  
OX12 8AE  
Tel: 01235 766222  
email: lettings@douglasandsimmons.co.uk  
www.douglasandsimmons.co.uk

From time to time we re-use photographs of sold properties for advertising and marketing purposes. Upon purchasing a property, if you would prefer us not to use photographs of your new home, we are obliged to ask you to inform us in writing.

