

Frank Harris & Co.



Flaxman Court, WC1H

£612 pcm

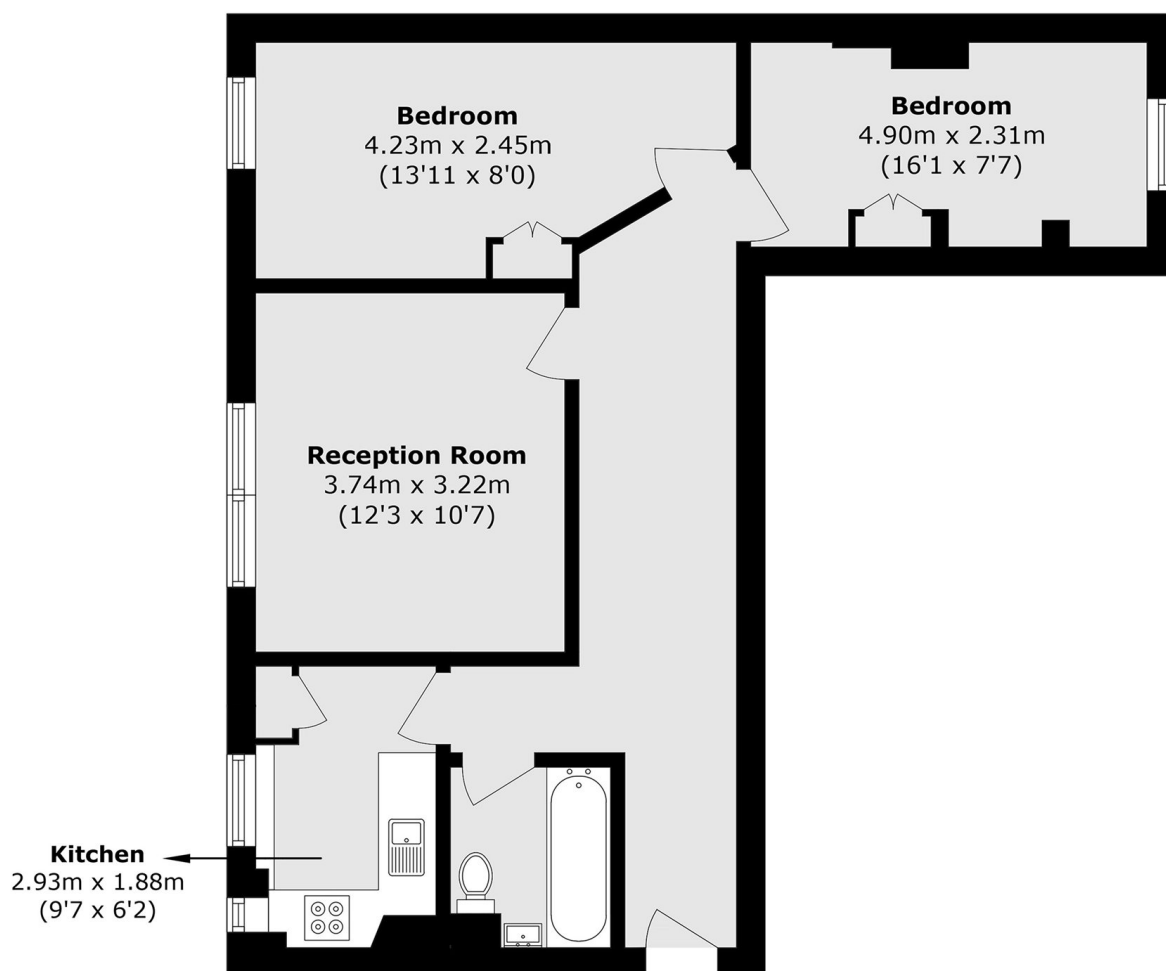
This two-bedroom flat offers two good-sized rooms with great storage throughout. The separate contemporary kitchen has all modern appliances, and a spacious reception room. The flat is on the first floor, with the added benefit of lift access.

Flaxman Court is a well-maintained mansion block offering lift access and a secure and professionally managed development. The property is ideally located close to excellent transport links, providing quick and easy access across London.

- Two Double Bedrooms • Period Mansion Block • Modern Bathroom •
- Separate Kitchen • Lift Access • Good Transport Links •

Frank Harris

— & Co. —



Total area (approx.): 56.4 sq. m (607.1 sq. ft)

Frank Harris & Co. Bloomsbury and Kings Cross
81 Marchmont Street,
London, WC1N 1AL
020 7387 0077
bloomsburylettings@frankharris.co.uk

Energy Rating: . We aim to make our particulars both accurate and reliable. However they are not guaranteed; nor do they form part of an offer or contract. If you require clarification on any points then please contact us, especially if you're traveling some distance to view. Please note that appliances and heating systems have not been tested and therefore no warranties can be given as to their good working order.

