



St. Georges Road, TW1

£11,000 Per calendar month

Dexters



St. Georges Road, TW1

Set over three floors, this double-fronted five bedroom home has been carefully extended and refurbished by the owners, creating a great balance of character and modern living.

Properties like this do not come around often. With direct access to the Trust Grounds and seven acres of beautifully kept gardens right on your doorstep the property offers a setting that is hard to beat.

The standout space is the open-plan kitchen and reception room at the rear, which works perfectly for both everyday living and entertaining. It opens straight out onto a west-facing garden that has been thoughtfully designed and well looked after; ideal for making the most of the afternoon and evening sun.

St Georges Road is well located close to Richmond town centre, with easy access to the River Thames, Richmond Green and Richmond Park. Excellent transport links are nearby, including Richmond and St Margarets stations with frequent services into central London, plus access to the A316, M3, M4 and M25. The area is also well served by a number of highly regarded local schools. Old Deer Park and Moor Mead Park are close by.

Features

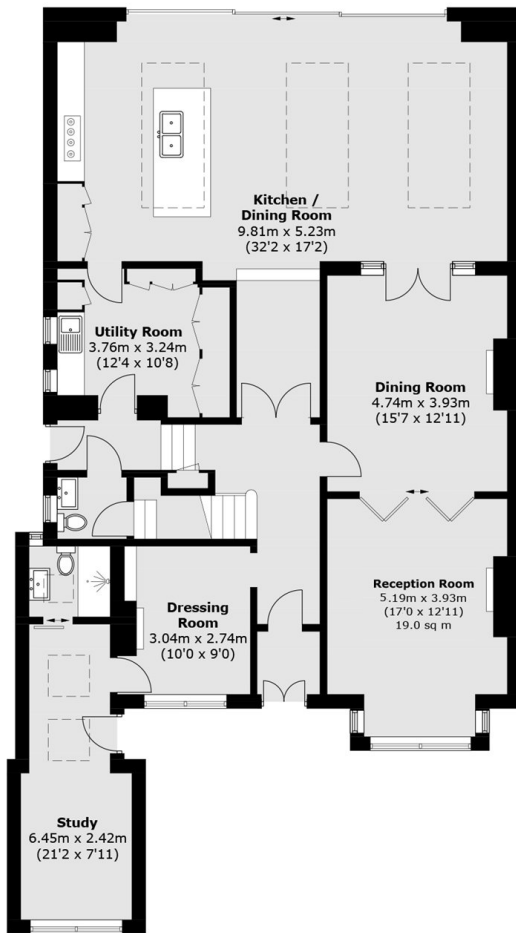
- Short Let
- Five Bedrooms
- Prime Location
- Open-Plan Living
- Landscaped Garden
- Direct Trust Grounds Access



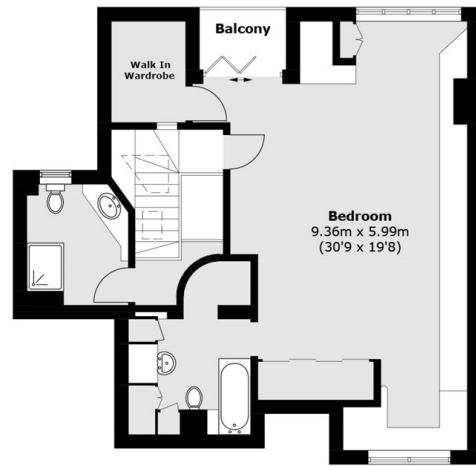




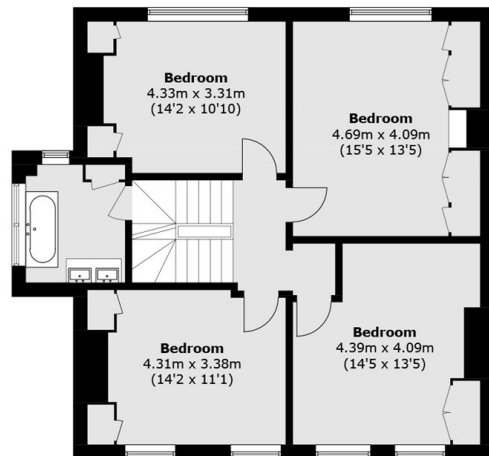
St. Georges Road, St Margarets, TW1



Ground Floor



Second Floor



First Floor

Total area (approx.): 311.9 sq. m (3,357.2 sq. ft)
Balcony: 2.5 sq. m (26.9 sq. ft)