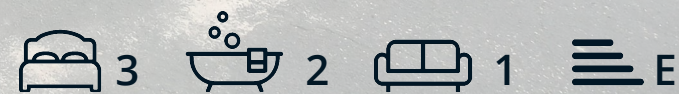




31 Hilltop Road

Wingerworth, Chesterfield, S42 6RX

Offers Over £300,000



31 Hilltop Road

Wingerworth, Chesterfield, S42 6DY

Situated in the pretty village of Wingerworth, close to local amenities and on the door step to a selection of stunning countryside walks, is this well presented 3 bedroom detached dormer bungalow.

Offering 1153 sqft of accommodation over 2 storeys, the property features a flexible layout with 2 ground floor bedrooms, 2 bathrooms and a separate WC, kitchen with integrated oven and a good-sized family lounge.

Externally, to the front and side of the property is a large block paved driveway providing off road parking for multiple cars. To the rear is a private, west-facing garden with lawn and patio area.

The ground floor comprises; entrance hallway, kitchen with integrated oven, ground floor bathroom and separate WC, 2 double bedrooms and a family lounge.

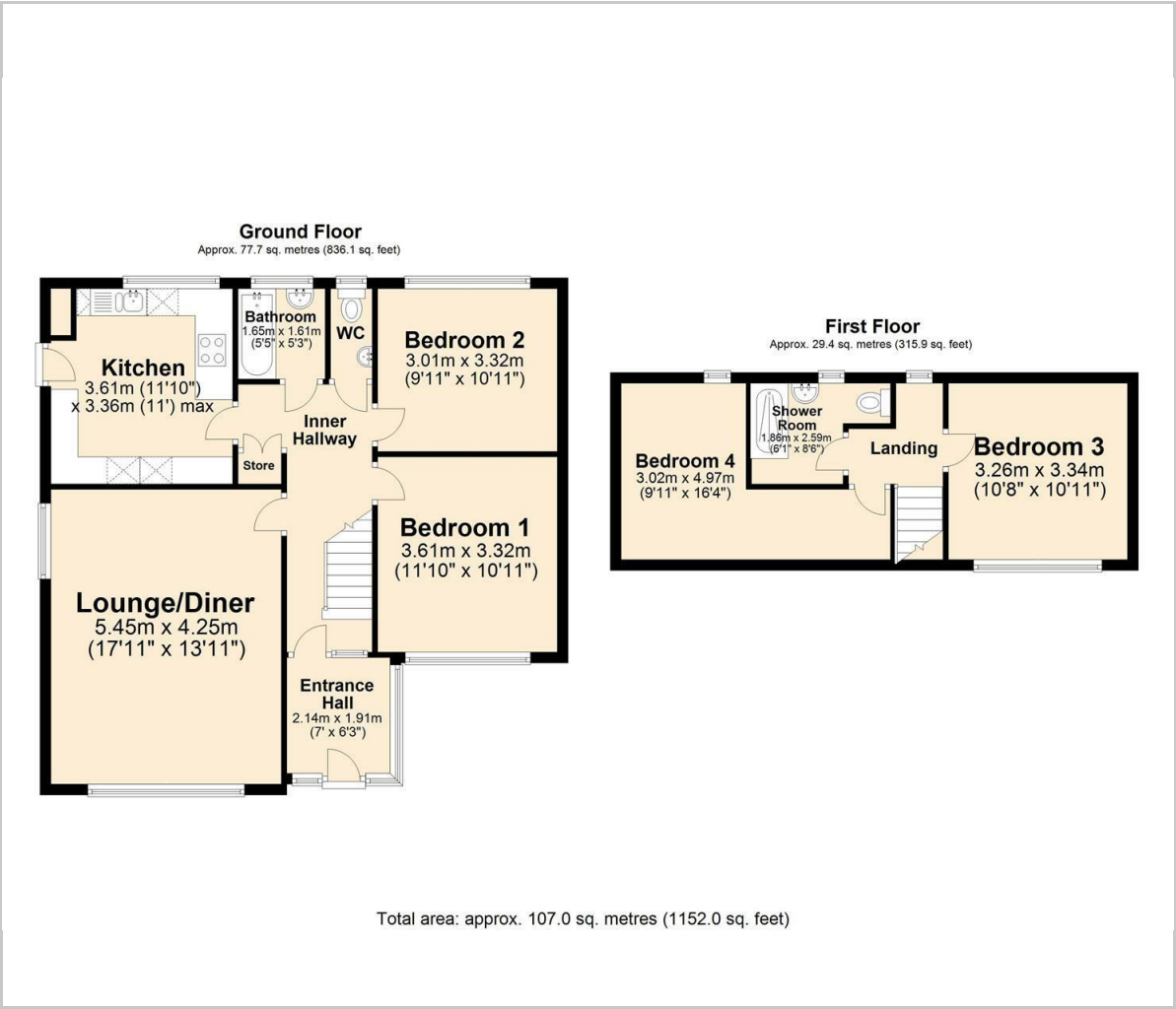
The first floor comprises; a further double bedrooms and a further bathroom. There is also an occasional use room (marked on the floorplan as bedroom 4)

Dales & Peaks ForwardMove
please read





Floor Plan

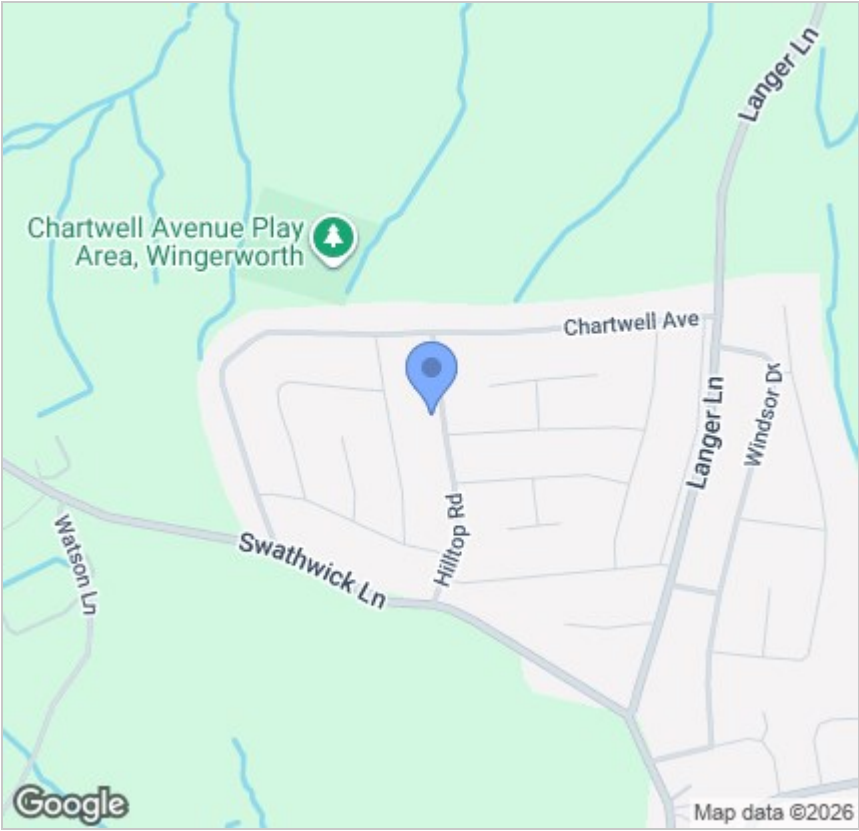


Viewing

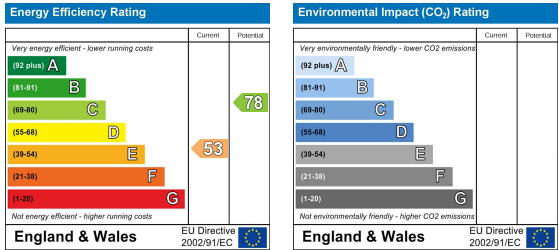
Please contact our Chesterfield Office on 01246 567540 if you wish to arrange a viewing appointment for this property or require further information.

These particulars, whilst believed to be accurate are set out as a general outline only for guidance and do not constitute any part of an offer or contract. Intending purchasers should not rely on them as statements of representation of fact, but must satisfy themselves by inspection or otherwise as to their accuracy. No person in this firms employment has the authority to make or give any representation or warranty in respect of the property.

Area Map



Energy Efficiency Graph



131 Chatsworth Road, Chesterfield, Derbyshire, S40 2AP
T: 01246 567540



E: info@dalesandpeaks.co.uk
www.dalesandpeaks.co.uk