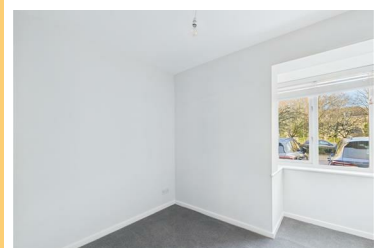
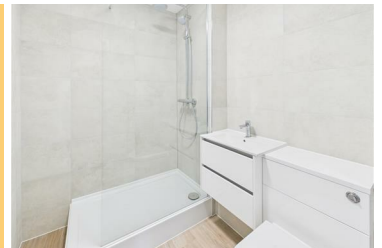




22 Redoubt Close, Hitchin, SG4 0FP
£1,300 PCM



This beautifully presented and recently refurbished ground floor two-bedroom apartment is situated within the highly sought-after Redoubt development. The property features a brand new fitted kitchen complete with integrated appliances, a modern bathroom, and two bedrooms. Available now. EPC Rating D (64)



- Refurbished ground floor apartment
- Brand-new fitted kitchen with appliances
- Popular Redoubt development
- Ample parking
- Two bedrooms
- Modern bathroom
- Walking distance to town centre
- Available now