



Ullswater

FOUR BEDROOM DETACHED HOUSE



The Meadows

MILNTHORPE

The Ullswater

GROUND FLOOR

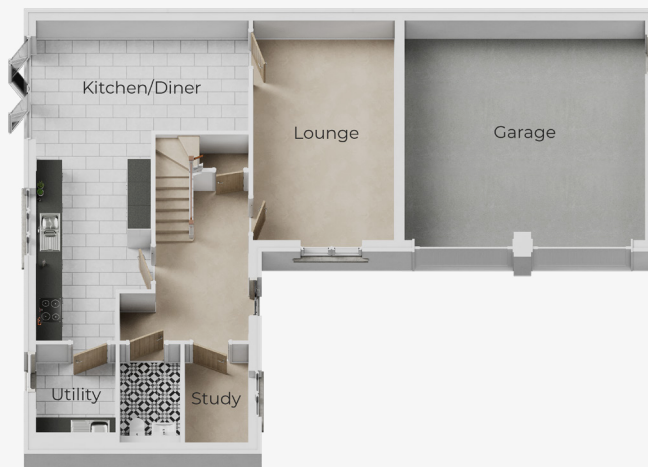
Kitchen / Diner
5.20m x 6.95m (max)

Lounge
3.48m x 5.69m

Study
1.54m x 2.53m

Utility
1.94m x 2.54m

Garage
5.94m x 5.72m



FIRST FLOOR

Primary Bedroom
3.43m x 3.72m

En-Suite
1.66m x 2.42m

Dressing Area
1.65m x 1.98m

Bedroom 2
4.53m x 2.83m

Bedroom 3
3.62m x 4.15m (max)

Bedroom 4
2.84m x 2.82m

Bathroom
2.82m x 2.73m



Tel. 07345 451262 / 015395 60605

The Meadows, Beetham Road, Milnthorpe, Cumbria LA7 7QW
www.oakmerehomes.co.uk


Oakmere[®]
CREATING QUALITY HOMES

The images shown are for illustration purposes only. Whilst every care is taken to ensure accuracy of information contained in this brochure, we cannot take responsibility for any error or misdescription and we reserve the right to alter or amend designs and specifications without prior notice. The information contained herein is for guidance only and does not form part of any contract or warranty. External finishes may vary from those shown and any dimensions given are approximate and sizes may vary from those indicated. Properties may be built handed (mirror image). External materials, landscaping, garage and window positions may vary to suit the location of individual homes. Elevational treatments may vary to those shown, please speak to our New Homes Advisor for the details regarding individual plot specifications.