

Sumatra Road, NW6

£925,000

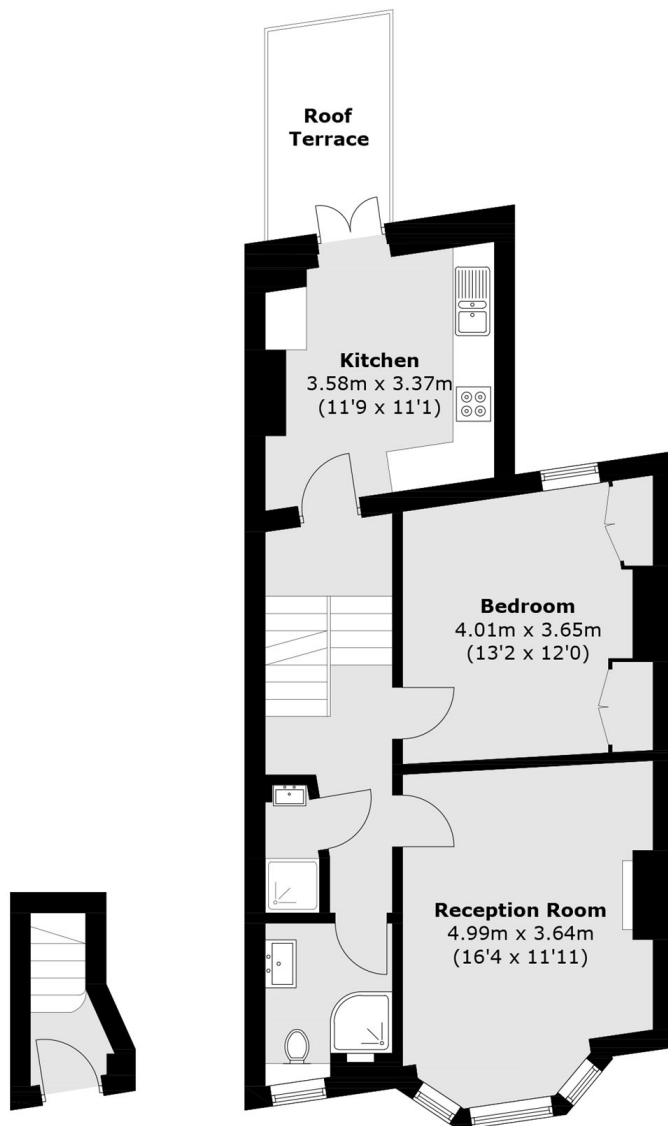
A four bedroom, two bathroom Victorian conversion flat arranged over three levels, offering character and flexible living. Benefits include an impressive reception room with high ceilings and bay window, share of freehold and no onward chain.

Sumatra Road is conveniently located just moments away from West End Lane which offers easy access to a variety of shops, bars and restaurants. Transport links include Thameslink, London Overground and West Hampstead tube station (Jubilee line).

Features

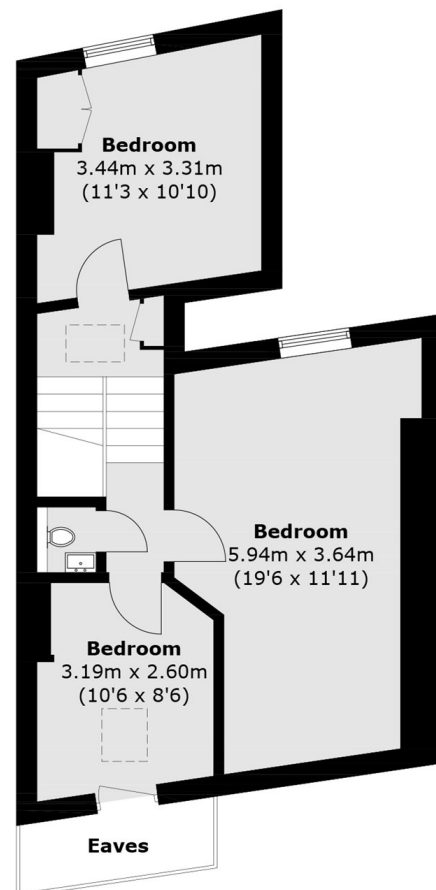
- Four Bedrooms
- Duplex Flat
- Period Features
- Two Bathrooms
- Share Of Freehold
- No Onward Chain

Sumatra Road, London, NW6



Ground Floor

First Floor



Second Floor

Total area (approx.): 109.1 sq. m (1,174.2 sq. ft)
(Excluding Eaves)
Roof Terrace: 5.4 sq. m (58.1 sq. ft)