



FLOWER COURT, W1W

£700,000

Open plan living
Long lease
Excellent location
Great Portland Street
One/two double bedrooms
Well maintained block

@marshandparsons
marshandparsons.co.uk

MARSH &
PARSONS



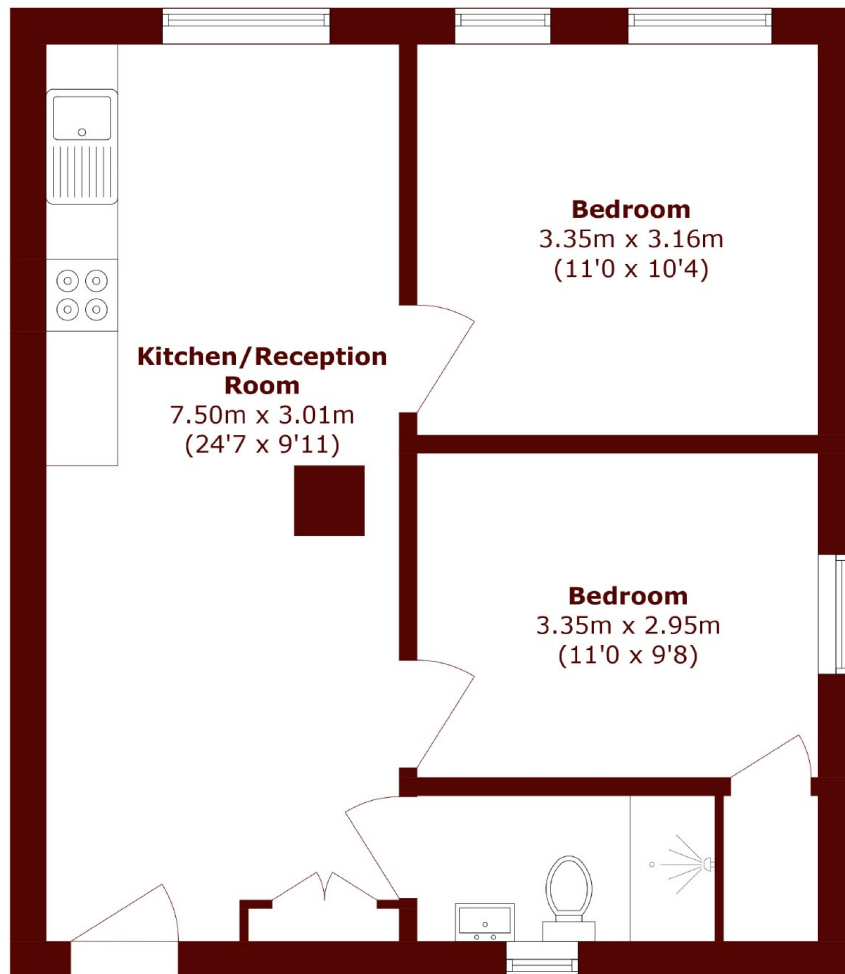
ABOUT THE PROPERTY

The property features a bright and versatile lateral layout, comprising a spacious double bedroom with ample storage space, a well-proportioned second room ideal as a guest bedroom or study, a contemporary bathroom, and a modern fitted kitchen opening onto a welcoming reception area. The property is meticulously finished throughout and benefits from being in a secure building.

Situated in a secure, well-maintained block, the flat benefits from an enviable location just moments from Marylebone High Street, Regent's Park, Fitzrovia, and Oxford Circus. It also has excellent transport links with Baker Street, Marylebone, Great Portland Street, Warren Street, and Euston stations within walking distance.



STEP INSIDE FLOWER COURT



Total area (approx.): 48.3 sq. m (519.9 sq. ft)

Marylebone & Mayfair
020 7935 1775

Energy Rating: B We aim to make our particulars both accurate and reliable. However, they are not guaranteed; nor do they form part of an offer or contract. If you require clarification on any points then please contact us, especially if you're traveling some distance to view. Please note that appliances and heating systems have not been tested and therefore no warranties can be given as to their good working order

MARSH &
PARSONS