

Cornwallis Square, N19

£400,000

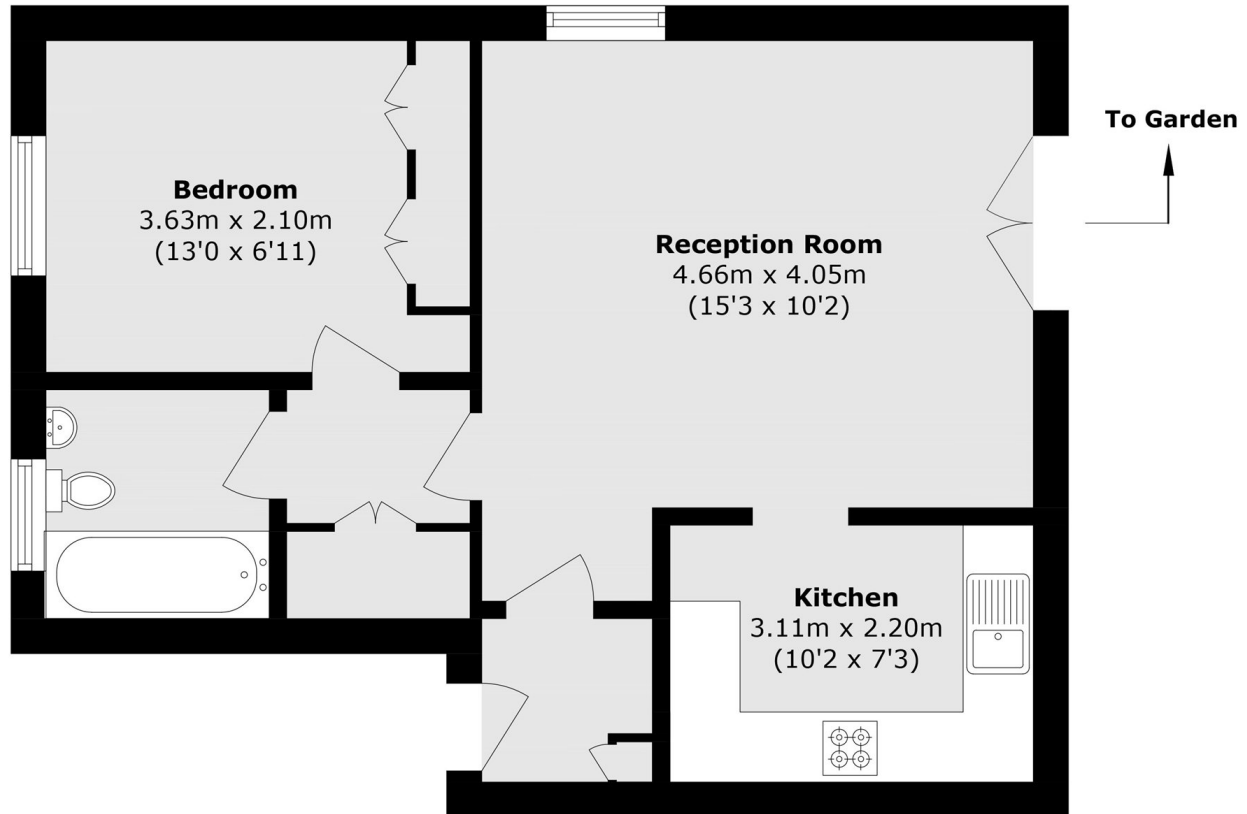
A spacious one bedroom apartment situated on the ground floor of a well-maintained building. This apartment offers a spacious reception room with a separate kitchen, and direct access to a large communal garden

Located close to Archway station (Northern line), Holloway Road station (Piccadilly line) and Upper Holloway (overground). A wide range of shops, cafés and restaurants can be found nearby on Holloway Road.

Features

- One Bedroom
- Reception Room
- Separate Kitchen
- Parking Space
- Good Transport Links
- Communal Garden

Cornwallis Square, London, N19



Total area (approx.): 45.8 sq. m (492.9 sq. ft)