



SAB

ESTATES

Greenway Gardens, Greenford

Offers Over **£315,000**

SAB

ESTATES



Greenway Gardens

Greenford

- First Floor Maisonette
- Chain Free
- Long Lease: 137 Years Remaining
- Free Street Parking
- Private Rear Garden
- Perfect for First Time Buyers
- New Electrics

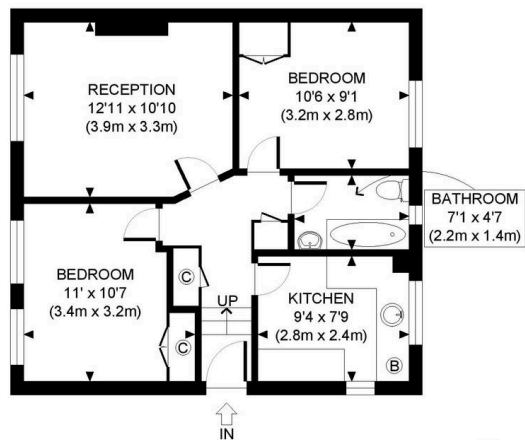
Council Tax band: C

Tenure: Leasehold

EPC Energy Efficiency Rating: C

EPC Environmental Impact Rating: C

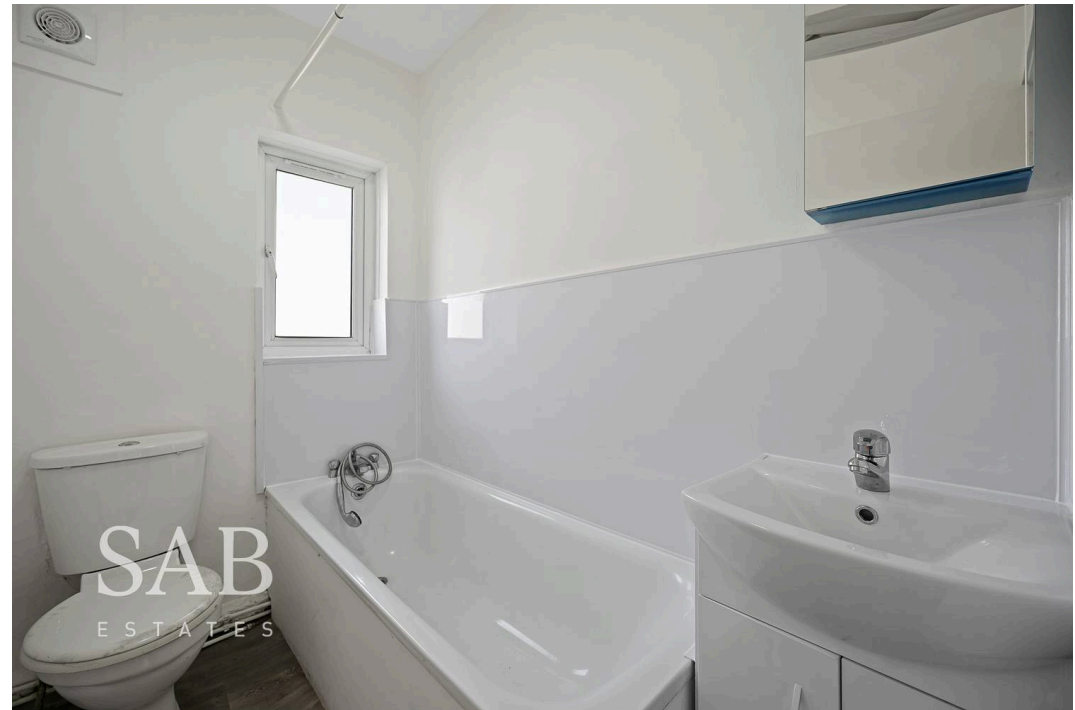




FIRST FLOOR
GROSS INTERNAL
FLOOR AREA 530 SQ FT

APPROX. GROSS INTERNAL FLOOR AREA: 530 SQ FT/ 49 SQM

This plan is for illustrative purposes only and should be used as such by any prospective client. Whilst every attempt has been made to ensure the accuracy of the Floor Plan contained here, measurements of the doors, windows, rooms and any other items are approximate and no responsibility is taken for any errors, omissions, or misstatement. The services, systems and appliances shown have not been tested and no guarantee as to the operability or efficiency can be given.





SAB Estates

236-238 Ruislip Road, Greenford - UB6 9RS

020 8575 2929 • info@sabestates.com • www.sabestates.com/