

# Fulham Road, SW3



A lovely well appointed 2 bedroom flat developed and interior designed by Ivar design, located on the third floor of a 1960's building with a lift benefiting from wood floors throughout mood lighting and bespoke fixtures. The building is ideally located on Brompton Cross moments from all the amenities of Knightsbridge, South Kensington and the King's Road Royal Borough Kensington & Chelsea Tax Band E

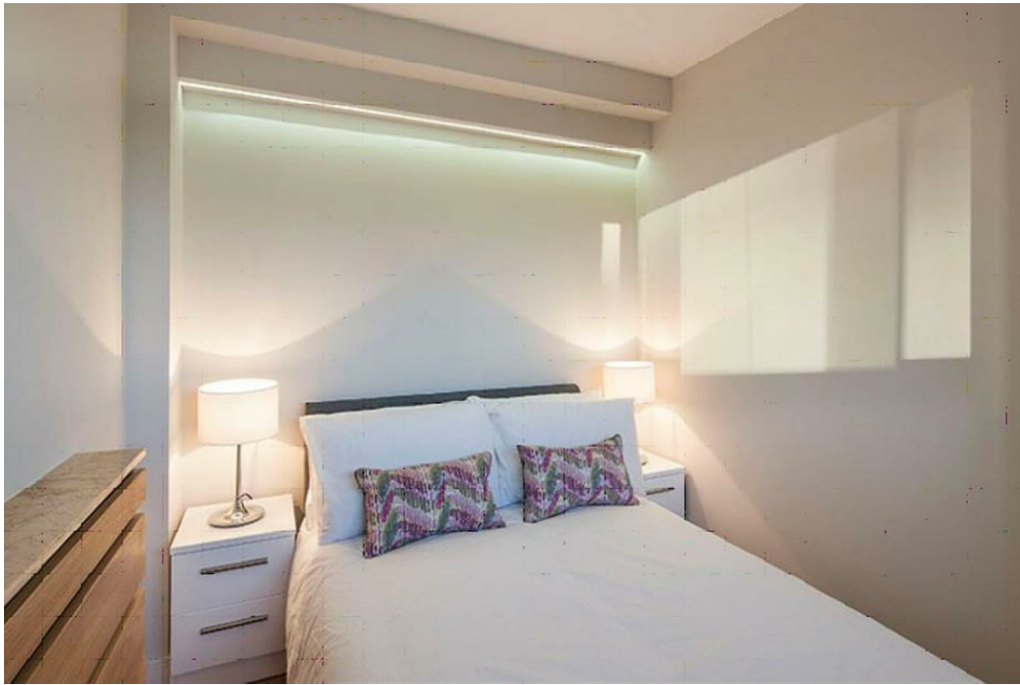
745.00 sq ft | 1 RECEPTION ROOM | 2 BEDROOMS | SHOWER ROOM | GUEST CLOAKROOM | KITCHEN



**Guide Price £1,100,000 STC**

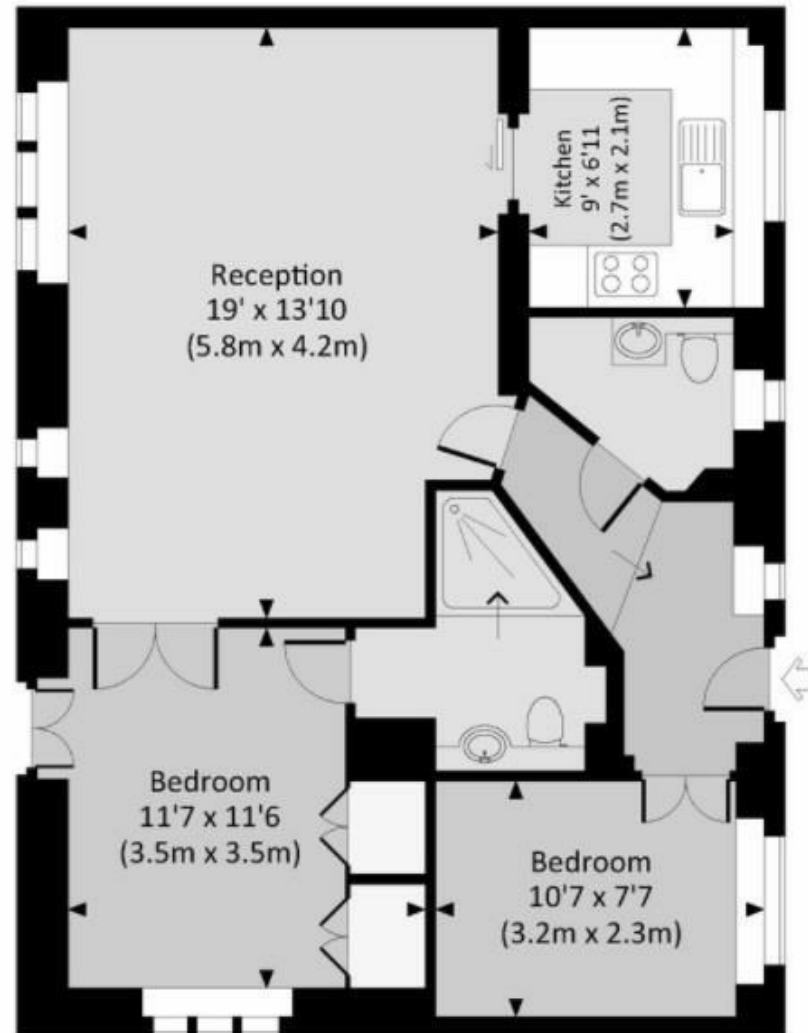
020 7937 9070  
[www.croft-international.com](http://www.croft-international.com)

**Leasehold**



KEPPEL HOUSE FULHAM ROAD, SW3

Approx. gross internal area  
745 Sq.Ft. / 69.2 Sq.M.



SECOND FLOOR

