

Frank Harris & Co.



Sinclair House, WC1H

£1,750 pcm

This one-bedroom, top floor property, is located in a well maintained Mansion block. The apartment is full of character, which lots of natural light and a newly refurbished bathroom. The secure building has fob access, and access to a communal roof terrace.

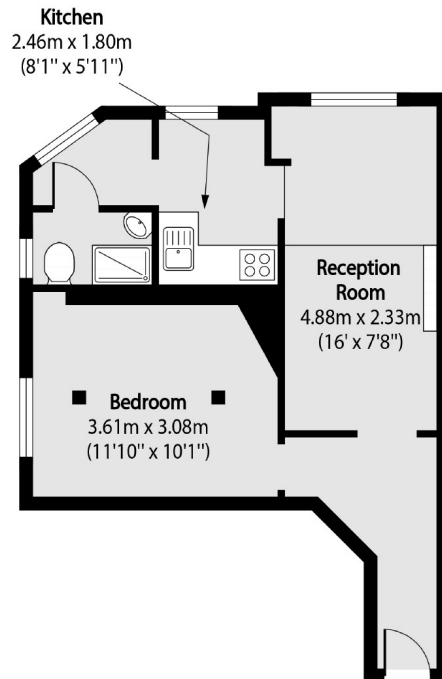


Sinclair House is very well located with Kings Cross St. Pancras and Russell Square stations are just a short walk away, serving fantastic transport links. Local amenities can be found nearby at The Brunswick Shopping Centre.

- One-Bedroom • Top Floor • Period Mansions Block •
- Central Location • Furnished • Wooden Floors •



Frank Harris & Co.



Total area (approx): 37.59 sq m (405 sq. ft)

Frank Harris & Co. Bloomsbury and Kings Cross

81 Marchmont Street,

London, WC1N 1AL

020 7387 0077

bloomsburylettings@frankharris.co.uk

Energy Rating: D. We aim to make our particulars both accurate and reliable. However they are not guaranteed; nor do they form part of an offer or contract. If you require clarification on any points then please contact us, especially if you're traveling some distance to view. Please note that appliances and heating systems have not been tested and therefore no warranties can be given as to their good working order.

