



01947 601301



ORCHARD COTTAGE, BLOOMSWELL, ROBIN HOODS BAY

2 BED COTTAGE



WWW.HOPEANDBRAIMESTATEAGENTS.CO.UK



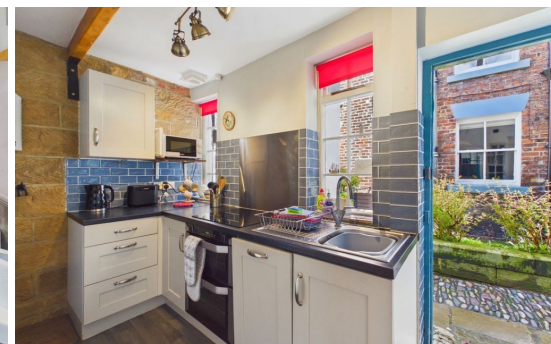
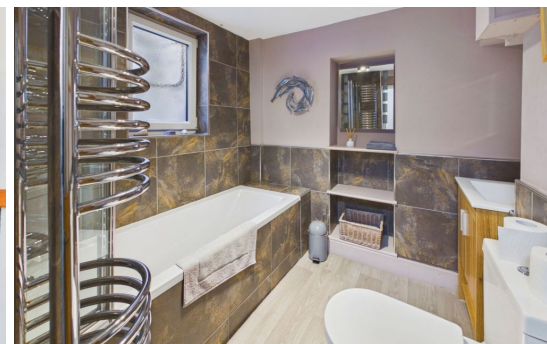
PROPERTY FEATURES

- Charming Cottage in Popular Coastal Village
- Period Features including Fireplaces & Beamed Ceilings
- Cosy Lounge with Log Burner & Picture Window
- Modern Kitchen & Separate Dining Room
- 2 Bedrooms & 2 Bathrooms, including an En-Suite
- Gas Central Heating Throughout
- Grade II Listed Property within a Conservation Area
- Successful Holiday Let that comes Fully Furnished

Type: COTTAGE
Availability: FOR SALE
Bedrooms: 2
Bathrooms: 2
Reception Rooms: 2

01947 601301

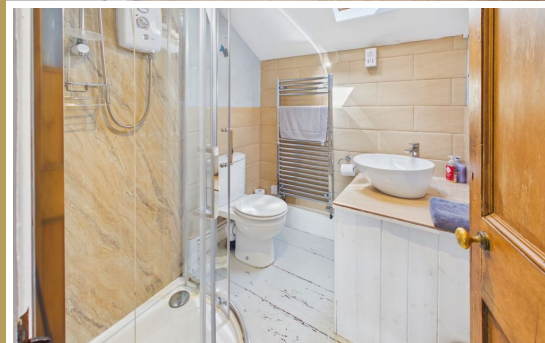
www.hopeandbraimstateagents.co.uk



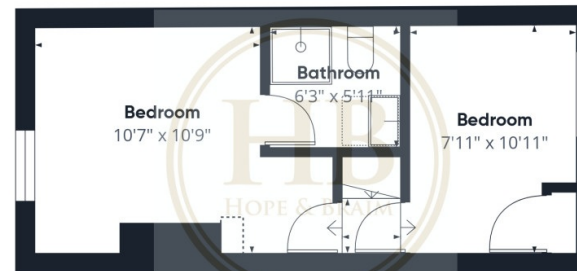
ORCHARD COTTAGE, BLOOMSWELL, ROBIN HOODS BAY- 2 bed Cottage -£350,000



Hope & Braim are delighted to present Orchard Cottage, a charming Grade II listed property occupying a coveted position in the heart of Robin Hood's Bay, one of North Yorkshire's most beloved and picturesque coastal villages. Spread across three floors, this characterful cottage offers an engaging combination of period authenticity and modern comfort that has proved consistently popular as a successful holiday let. The property is offered fully furnished, presenting an exceptional ready-to-let investment or a delightful coastal retreat. The cosy lounge sets the tone beautifully, with a log burner providing a warm focal point and a picture window framing the surrounding village scene. Original beamed ceilings and period fireplaces lend the interior an authenticity that is rarely replicated, speaking to the cottage's rich architectural heritage within the Robin Hood's Bay Conservation Area. The modern kitchen is well-appointed and thoughtfully finished, complemented by a separate dining room that affords a more formal space for meals and entertaining, a welcome distinction in a property of this character. A useful utility room adds a practical dimension to the domestic arrangements. Accommodation extends to two well-proportioned bedrooms, with the convenience of two bathrooms, one of which serves as an en-suite, ensuring the property performs well for holiday letting purposes and family use alike. Gas central heating runs throughout, providing reliable warmth during the cooler months that characterise this stunning stretch of the North Yorkshire coast. Orchard Cottage is a rare opportunity to acquire a listed coastal cottage of genuine character, in one of the region's most sought-after villages.



ORCHARD COTTAGE, BLOOMSWELL, ROBIN HOODS BAY- 2 bed Cottage -£350,000



Approximate total area⁽¹⁾
735 ft²

Reduced headroom
1 ft²

(1) Excluding balconies and terraces

Reduced headroom
..... Below 5 ft

Calculations reference the RICS IPMS 3C standard. Measurements are approximate and not to scale. This floor plan is intended for illustration only.

GIRAFFE360

Disclaimer: This brochure and property details are a representation of the property offered for sale or rent, as a guide only.

Brochure content must not be relied upon as fact and does not form any part of a contract. Measurements are approximate.

No fixtures or fittings, heating system or appliances have been tested, nor are they warranted by Hope & Braim or any staff member in any way as being functional or regulation compliant.

Hope & Braim do not accept any liability for any loss that may be caused directly or indirectly by the brochure content, all interested parties must rely on their own, their surveyor's or solicitor's findings.

We advise all interested parties to check with the local planning office for details of any application or decisions that may be consequential to your decision to purchase or rent any property.

Any floor plans provided should be used for illustrative purposes only and should be used as such by any interested party.

