



Guide Price
£200,000

Freehold

2x  1x  1x 

**Lime Kiln Road,
Canterbury, Kent, CT1**

OVER 60?

Secure this property
for up to **59% less!**

Wards
Helping you move forwards



Main features

- End of terrace home set in Wincheap
- No onward chain complications
- Ideal for first time buyers or those looking to downsize
- Rear garden, perfect for pets or relaxing with a coffee
- Parking for a small car to the front

Accommodation

GROUND FLOOR

Lounge: 14'1 x 10'5 (4.30m x 3.18m)

Bathroom

Kitchen/Diner: 14'1 x 7'1 (4.30m x 2.16m)

FIRST FLOOR

Landing

Bedroom 1: 14'1 x 8'6 (4.30m x 2.59m)

Bedroom 2: 7'6 x 6'4 (2.29m x 1.93m)

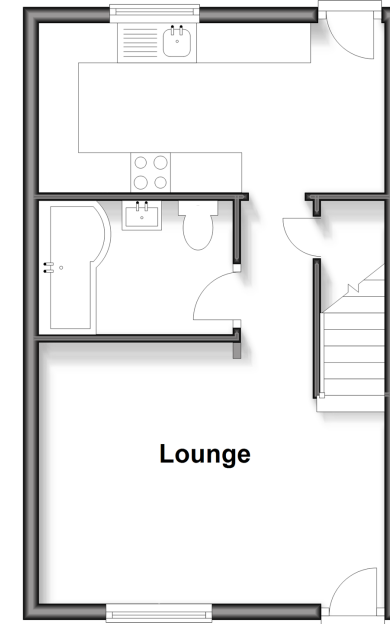
OUTSIDE

Off Road Parking

Rear Garden

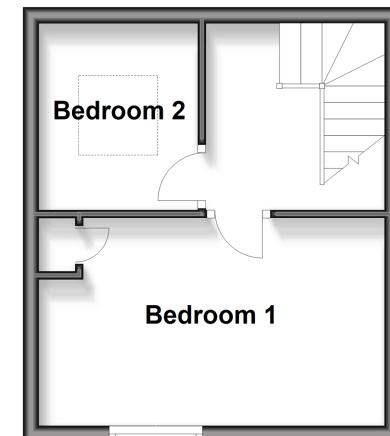
Ground Floor

Approx. 31.7 sq. metres (341.4 sq. feet)



First Floor

Approx. 22.0 sq. metres (237.0 sq. feet)



Call Canterbury - 01227 766669 ■ wardsof Kent.co.uk

- Legal advice should be taken to verify fixtures/fittings, planning, alterations and/or lease details
- Appliances & services are untested, dimensions are approximate and floor plans are not to scale
- Through a Homewise Home For Life Plan people aged 60+ can secure this property for up to 59% less, by purchasing a Lifetime Lease



10346593/20260224/JT/CB