



Pinkmove

Thorncliffe Road

Guide Price £230,000 to £240,000

- Master Bedroom with En-Suite
- Ample off-Road Parking
- Downstairs W.C
- Cul de Sac Location
- Modern Fitted Kitchen
- Local Schools and Amenities
- EPC Rating: C



Pinkmove



Pinkmove

01633 746088
team@pinkmove.co.uk



About the property

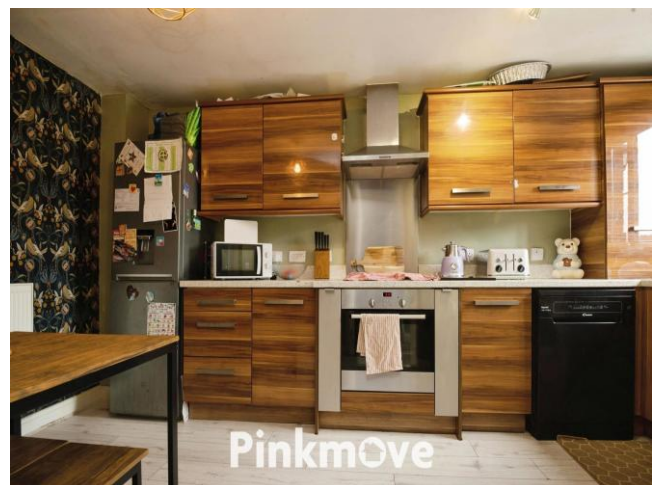
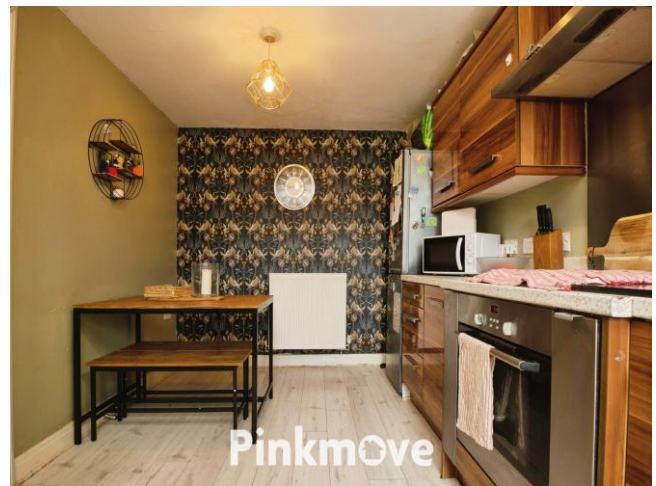
We are delighted to present this well-maintained three-bedroom semi-detached family home, ideally positioned in a cul-de-sac close to local amenities and schools. Offering off-road parking and generous living space, this property is perfectly suited to families, first-time buyers, or those seeking a comfortable, well-located home.

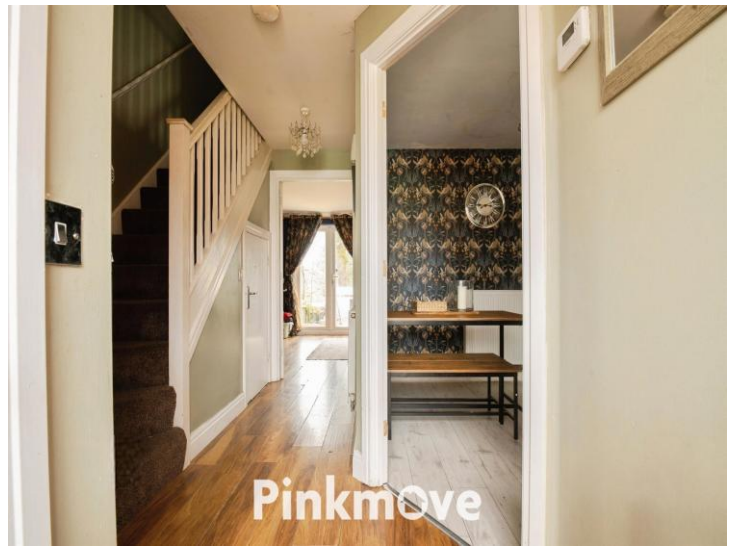
The ground floor comprises a welcoming entrance hallway, a convenient ground-floor W.C., and a good-size modern fitted kitchen with ample space for a breakfast table. To the rear, the spacious lounge features French doors opening directly onto the garden, creating a bright and inviting living space, along with useful under-stairs storage.

To the first floor, the property offers a family bathroom and three well-proportioned bedrooms, including a master bedroom with en-suite. Additional storage can be found on the landing.

Externally, the home benefits from front and rear gardens, ideal for families or outdoor entertaining, along with a driveway to the side providing parking for two cars.

This lovely home offers comfortable accommodation in a desirable setting and is well worth viewing.





Accommodation

Kitchen

Wc

Living Room

Bedroom 1

En-Suite

Bedroom 2

Bedroom 3

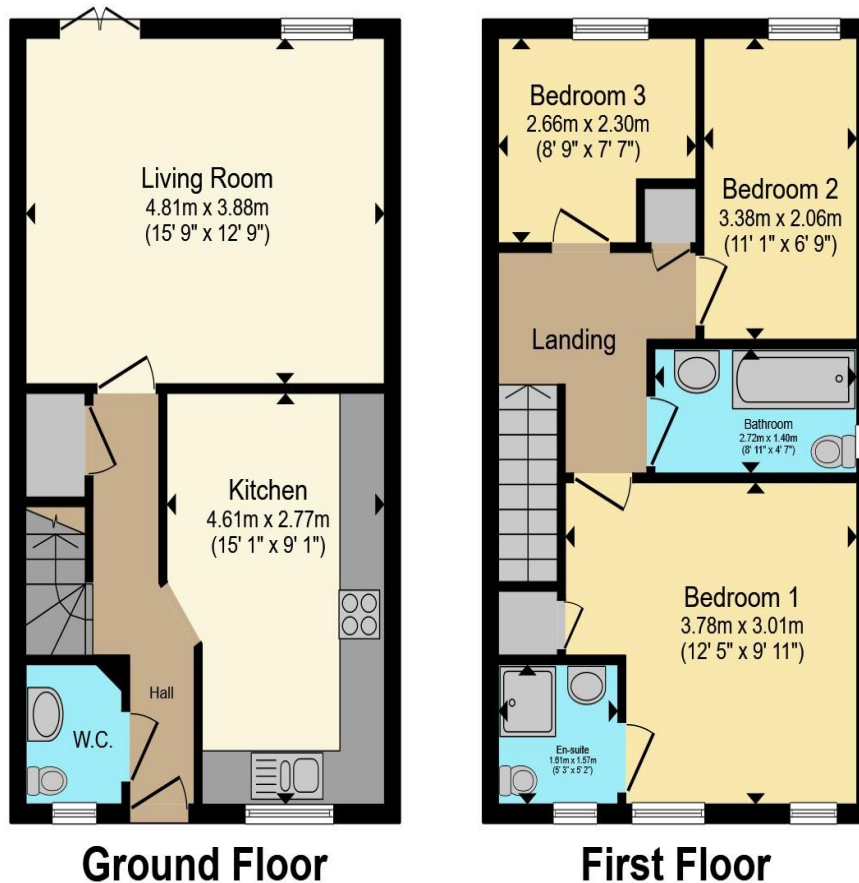
Bathroom

01633 746088

team@pinkmove.co.uk

Pinkmove

Floorplan



Total floor area 82.8 sq.m. (891 sq.ft.) approx

This floor plan is for illustrative purposes only. It is not drawn to scale. Any measurements, floor areas (including any total floor area), openings and orientation are approximate. No details are guaranteed, they cannot be relied upon for any purpose and they do not form part of any agreement. No liability is taken for any error, omission or misstatement. A party must rely upon its own inspection(s). Powered by www.focalagent.com

Pinkmove

Important Information

Note while we endeavour to make our sales details accurate and reliable, if there is any point which is of particular interest to you, please contact the office and we will be pleased to confirm the position for you. We have not personally tested any apparatus, equipment, fixtures, fittings or services and cannot verify they are in working order or fit for their purposes. Nothing in these particulars is intended to indicate that carpets or curtains, furnishings or fittings, electrical goods (whether wired or not). Gas fires or light fittings or any other fixtures not expressly included form part of the property offered for sale. This computer generated Floorplan, if applicable, is intended as a general guide to the layout and design of the property. It is not to scale and should not be relied upon for dimensions. Tenure: We cannot confirm the tenure of the property as we have not had access to the legal documents. The buyer is advised to obtain verification from their solicitor or surveyor.

Peter Alan Limited is registered in England and Wales under company number 2073153. Registered Office is Cumbria House, 16-20 Hockliffe Street, Leighton Buzzard, Bedfordshire, LU7 1GN. VAT Registration Number is 500 2481 05. For activities relating to regulated mortgages and non-investment insurance contracts, Peter Alan Limited is an appointed representative of Connells Limited which is authorised and regulated by the Financial Conduct Authority. Connells Limited's Financial Services Register number is 302221. Most buy-to-let

