

## Randolph Avenue, W9

£950,000

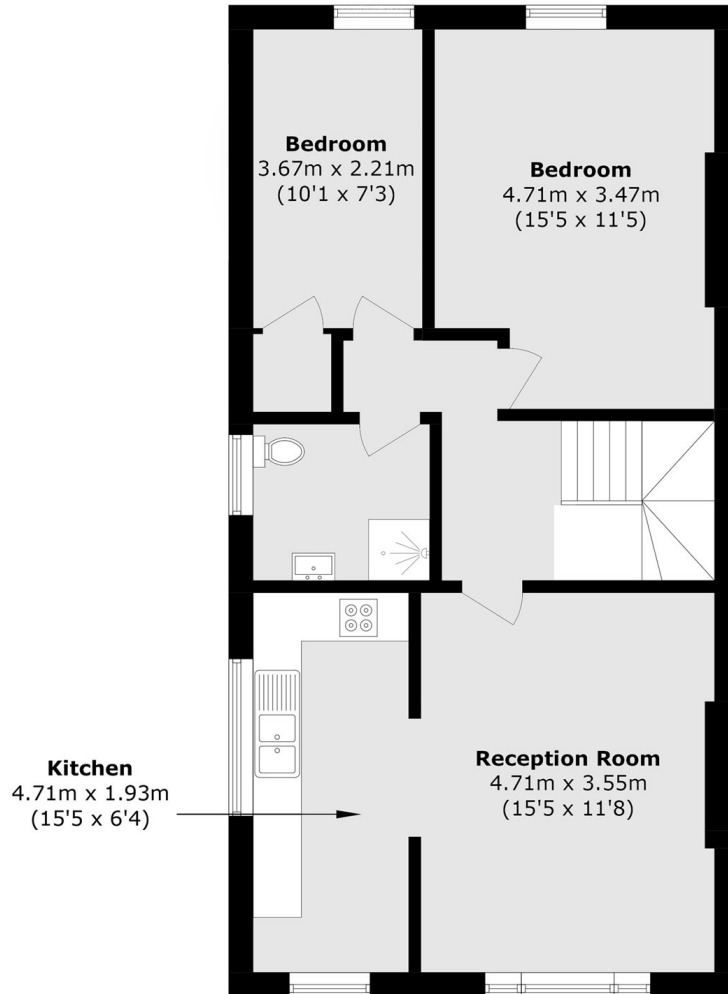
This recently renovated top floor flat is set in a Victorian conversion, offering two double bedrooms, bright reception, separate kitchen and sash windows throughout. This property is being offered chain free and with demised loft space and a license to alter.

Set in the heart of Little Venice, Randolph Avenue is only moments away from Regent's Canal and the fantastic local amenities on Clifton Road. Nearby transport is provided by the way of Warwick Avenue and Maida Vale underground stations (Bakerloo line).

### Features

- Top Floor Flat
- Recently Refurbished
- Demised Loft Space
- Prime Location
- Chain Free
- Great Transport Links

# Randolph Avenue, Maida Vale, W9



## Second Floor

Total area (approx.): 66.9 sq. m (720.1 sq. ft)