



Suffolk Court, Suffolk Place, Cheltenham, Gloucestershire, GL50 2QG

£275,000

🛏 1 🚿 1 🚗 1



Located within the highly sought-after Montpellier district of Cheltenham, this beautifully presented one bedroom garden apartment offers stylish and contemporary accommodation alongside a fantastic private rear south facing garden.

Positioned within an attractive period building on Suffolk Place, the apartment enjoys an enviable central location just moments from Montpellier Gardens, fashionable bars and restaurants, independent boutiques and Cheltenham Town Centre.

The accommodation is well-proportioned throughout and briefly comprises a spacious sitting/dining room with neutral décor, feature fireplace and ample space for both living and dining furniture, creating a bright and comfortable entertaining space.

The modern galley-style kitchen has been thoughtfully designed with a range of sleek fitted units, wooden work surfaces, integrated appliances and contemporary lighting, making excellent use of the available space.

To the rear of the property is a generous double bedroom benefiting from fitted storage and direct access onto the private landscaped garden, allowing plenty of natural light and creating a wonderful indoor-outdoor feel.

The bathroom has been finished in a contemporary style with dark tiled walls, modern sanitaryware and a heated towel rail.

Externally, one of the standout features of the property is the private south facing rear garden. Beautifully landscaped and designed for low maintenance, the space provides an ideal setting for outdoor dining, entertaining or simply relaxing during the warmer months.

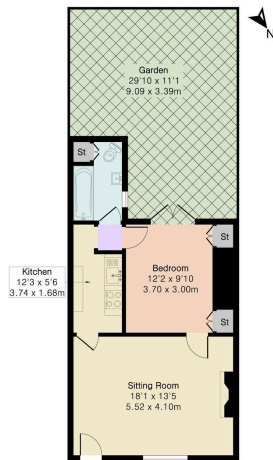
This superb apartment would make an ideal first-time purchase, pied-à-terre or investment opportunity and early viewing is highly advised.

Share of Freehold

Remaining years of lease: 954



Approximate Gross Internal Area 525 sq ft - 49 sq m

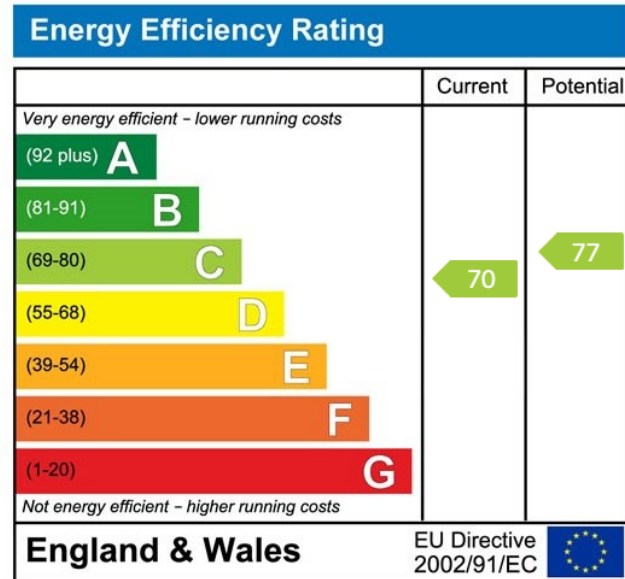


PINK PLAN

Floor plan produced in accordance with RICS Property Measurement 2nd Edition. Although Pink Plan Ltd ensures the highest level of accuracy, measurements of doors, windows and rooms are approximate and no responsibility is taken for error, omission or misstatement. These plans are for representation purposes only and no guarantee is given on the total square footage of the property within this plan. The figure shown is for initial guidance only and should not be relied on as a basis of valuation.



- One bedroom garden apartment
- Located in the heart of Montpellier
- Stylishly presented throughout
- Modern fitted galley kitchen
- Direct access to the garden from the bedroom
- Private landscaped south facing rear garden
- Beautiful period building
- Spacious sitting/dining room
- Contemporary bathroom suite
- Walking distance to Cheltenham Town Centre, bars, cafés & restaurants



Elliot Oliver Sales
 101 Promenade, Cheltenham GL50 1NW
 01242 321091
www.eosales.co.uk

