



Pilot Close, SE8

£450,000

Situated on a quiet street in Deptford, this split-level maisonette offers the feel of a house rather than a flat, complete with private front and rear gardens - an ideal way to enjoy house-style living without the price tag.

The ground floor features a W/C, a kitchen with built-in utility space, and a spacious lounge/diner with direct access to the rear garden, which also benefits from gated access.

Upstairs are two double bedrooms and a family bathroom. The main bedroom overlooks the rear and enjoys a high level of privacy, with no directly facing properties and a park located beyond the back gate. It also includes a built-in wardrobe.

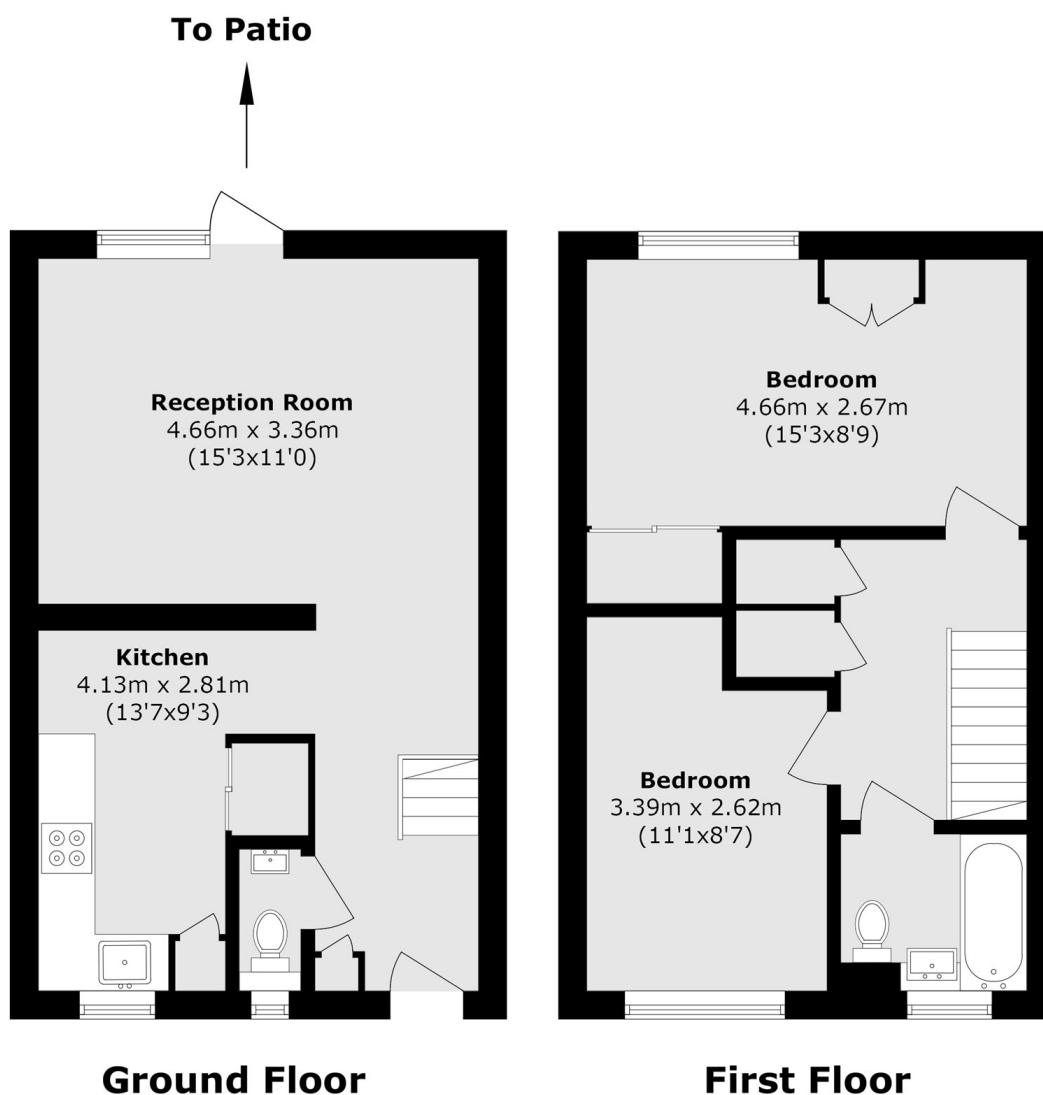
Further benefits include double glazing throughout, gas central heating, and permit parking.

Pilot Close is ideally positioned 0.5 miles from both Deptford and New Cross stations, with Surrey Quays and Canada Water Underground stations also close by. Local shops, cafés and restaurants are within easy reach, along with Greenwich, Southwark and Deptford Parks. Frequent bus routes, including night services, provide direct links to Central London and major shopping destinations.

Features

- Split Level Maisonette
- Private Front And Back Garden
- Gas Central Heating
- W/C
- Quiet Residential Location
- Close To Transport Links

Pilot Close, London, SE8



Total area (approx.): 72.2 sq. m (777.1 sq. ft)