



**Guide Price**  
**£280,000**

**Leasehold**

2x  2x  1x 

**Bronte House, Cornwell  
Avenue, Forge Wood,  
Crawley, West Sussex,  
RH10**

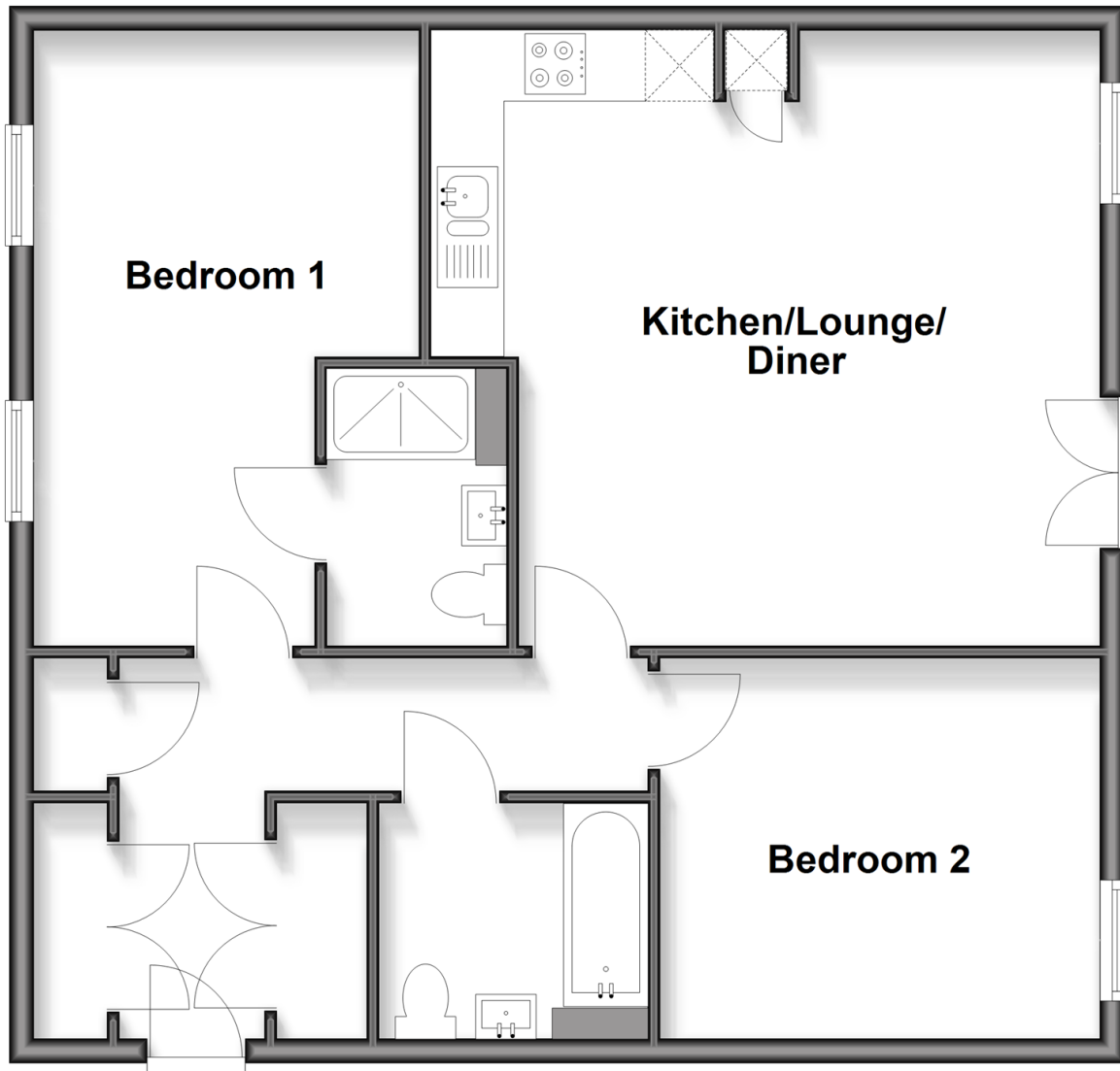
**OVER 60?**

Secure this property  
for up to **59% less!**

**cubitt & west**  
Helping you move forwards

## Second Floor

Approx. 73.7 sq. metres (793.0 sq. feet)



## Accommodation

### SECOND FLOOR

Entrance Hall

Lounge/Diner/Kitchen: 18'3 x 16'0 (5.57m x 4.88m)

Bedroom 1: 16'9 (5.11m) x 10'5 (3.18m)  
narrowing to 7'8 (2.34m)

En Suite Shower Room: 7'6 x 4'9 (2.29m x 1.45m)

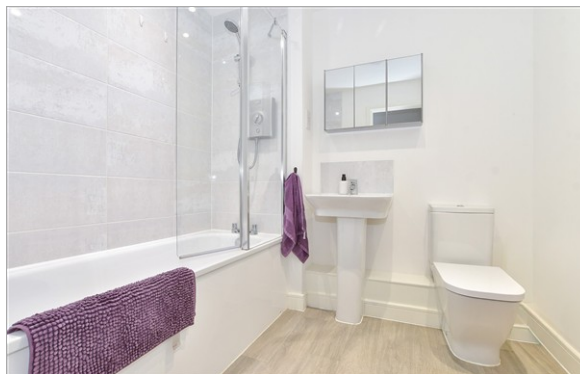
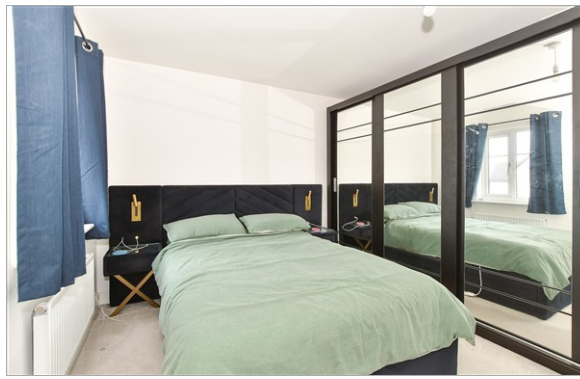
Bedroom 2: 11'1 x 10'4 (3.38m x 3.15m)

Bathroom: 7'4 x 6'4 (2.24m x 1.93m)

### OUTSIDE

Allocated Parking Space

Communal Gardens



## Main features

- Modern second floor apartment
- Spacious open plan Kitchen/lounge/diner area with integrated appliances
- Bedroom one has an en suite shower room in addition to the bathroom
- Well presented throughout
- Allocated parking space and communal gardens



### Nearest Schools

Primary Schools: Milton Mount Primary 0.6 miles, Pound Hill Junior School, Crawley 1.1 miles, Northgate Primary 1.4 miles

Secondary Schools: Hazelwick School 0.7 miles, Oriel High



### Transport Information

Train Stations: Three Bridges 1.2 miles, Gatwick Airport 1.4 miles, Crawley 2.0 miles



### Address

Bronte House, Cornwell Avenue, Forge Wood, Crawley, West Sussex, RH10



### Directions

For directions to this property please contact us.



**cubitt&west**  
Helping you move forwards

Call Crawley Branch 01293 522233 ■ [cubittandwest.co.uk](http://cubittandwest.co.uk)



- Legal advice should be taken to verify fixtures/fittings, planning, alterations and/or lease details
- Appliances & services are untested, dimensions are approximate and floor plans are not to scale
- Through a Homewise Home For Life Plan people aged 60+ can secure this property for up to 59% less, by purchasing a Lifetime Lease

EPC RATING	CURRENT:	POTENTIAL:
	B(34)	B(34)

20420684/20260316/DC/DC