



27 Friesian Way

Kennington Ashford, TN24 9LE

£1,700 Per Month

Available To Let is this lovely family home situated in the popular Kennington Area which is located within reach of local schools and shopping amenities. Only a short drive is the M20 and Eureka Park.

Three bedrooms on the first floor with an en-suite to the main bedroom and a family bathroom. Downstairs are two reception rooms and a kitchen.

To the rear is an enclosed garden and to the front a private driveway and garage. This home also offers gas central heating and double glazing. Call us now to register your interest and to arrange a viewing.

Security Deposit £1961

Council Tax Band E

EPC Rating C

Viewing

Please contact our Ashford Office on 01233 646411 if you wish to arrange a viewing appointment for this property or require further information.

- THREE BEDROOM DETACHED HOME
- POPULAR KENNINGTON LOCATION
- GREAT ACCESS TO LOCAL AMENITIES AND M20
- TWO RECEPTION ROOMS
- MODERN FITTED KITCHEN
- CLOAKROOM
- EN-SUITE TO MAIN BEDROOM
- FAMILY BATHROOM
- ENCLOSED REAR GARDEN
- DRIVEWAY AND GARAGE TO THE FRONT



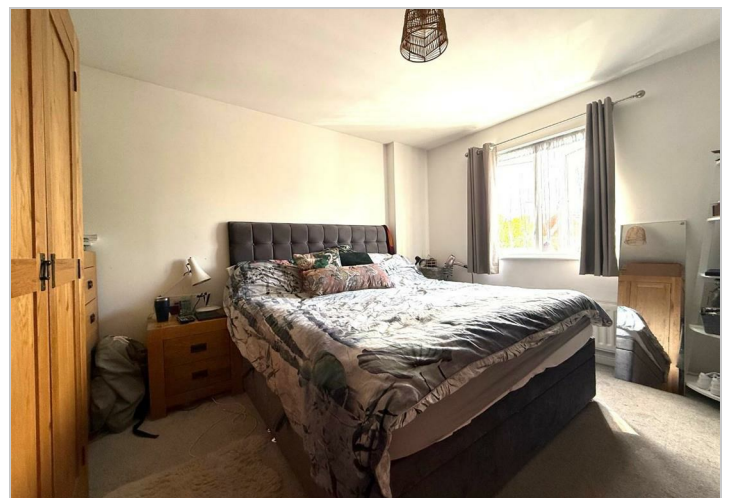
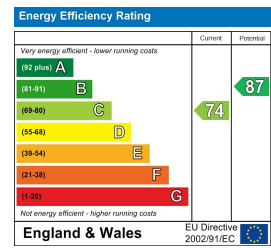
Floor Plan



Area Map



Energy Efficiency Graph



These particulars, whilst believed to be accurate are set out as a general outline only for guidance and do not constitute any part of an offer or contract. Intending purchasers should not rely on them as statements of representation of fact, but must satisfy themselves by inspection or otherwise as to their accuracy. No person in this firm's employment has the authority to make or give any representation or warranty in respect of the property.