

Floor Plan

**DID YOU HEAR...?
WE WON!**



**BRITISH
PROPERTY
AWARDS**
2023 - 2024
★★★★★
GOLD WINNER
LETTING AGENT
IN LOUGHTON

britishpropertyawards.co.uk

BRICKS.

ESTATE AGENTS



£1,800 Per month

These particulars, whilst believed to be accurate are set out as a general outline only for guidance and do not constitute any part of an offer or contract. Intending purchasers should not rely on them as statements of representation of fact, but must satisfy themselves by inspection or otherwise as to their accuracy. No person in this firm's employment has the authority to make or give any representation or warranty in respect of the property.

Contact Us

- 0203 634 9998
- hello@bricksestateagents.co.uk
- 186 Queens Road, Buckhurst Hill, Essex, IG9 5BD

Energy Efficiency Rating		Current	Potential
Very energy efficient - lower running costs			
(92 plus) A			
(81-91) B			
(69-80) C			79
(55-68) D		61	
(39-54) E			
(21-38) F			
(1-20) G			
Not energy efficient - higher running costs			
England & Wales		EU Directive 2002/91/EC	

48 Queens Avenue, London, N21 3JH

Presenting an exquisite two-bedroom split level flat located in the vibrant heart of Winchmore Hill, Bricks Estate Agents proudly offer this stunning property to the market.

This exceptional home boasts a unique split-level layout, with the first floor showcasing a generously sized kitchen, a bright and airy reception room flooded with natural light, and overlooking the bustling Winchmore Hill high street. Ample storage is provided with three storage cupboards on this floor, ensuring a clutter-free living space.

Ascending to the second floor, you will find two beautifully appointed bedrooms and a luxurious three-piece bathroom suite, providing a sanctuary for relaxation and rejuvenation.

Nestled in the sought-after N21 postcode, this property enjoys the convenience of being surrounded by the vibrant atmosphere of Winchmore Hill high street. This bustling area offers an array of shops, eateries, and amenities, creating a dynamic and lively environment for residents to enjoy.

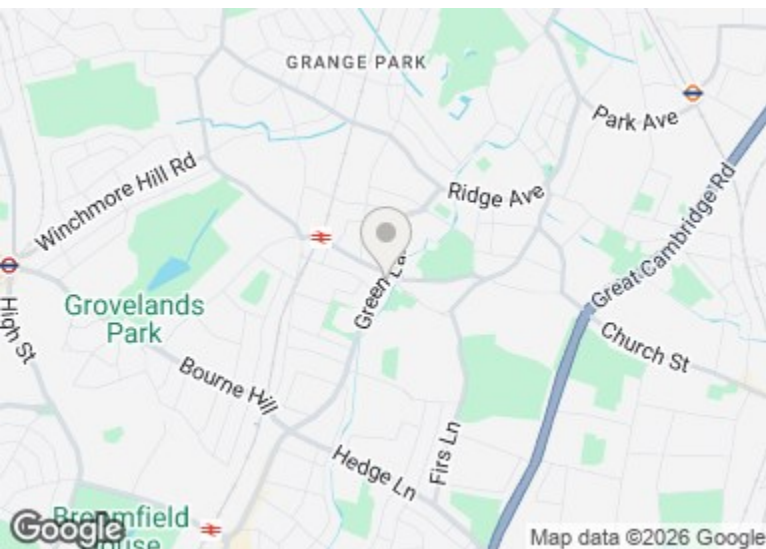
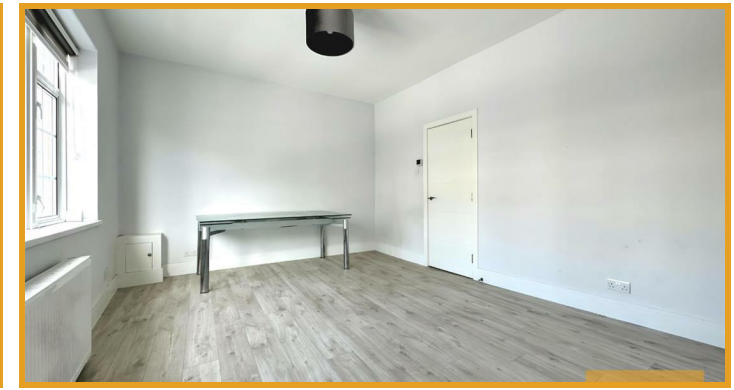
Don't miss the opportunity to make this remarkable property your new home - us today to arrange a viewing and experience the epitome of modern living in Winchmore Hill.

48 Queens Avenue, London, N21 3JH



- Available 1st June 2024
- Two Bedrooms
- Split Level
- Plenty Of Ample Storage Throughout
- Generously Sized Kitchen

- Situated in The Heart Of Winchmore Hill
- Oozing With Natural Light Throughout
- Bright And Airy Reception Room
- Luxurious Three Piece Bathroom Suite
- Surrounded By The Vibrant Atmosphere Of Winchmore Hill High Street



Directions

BRICKS.
ESTATE AGENTS