



move
Property Sales & Lettings

Brunswick Street, Cheltenham



Brunswick Street

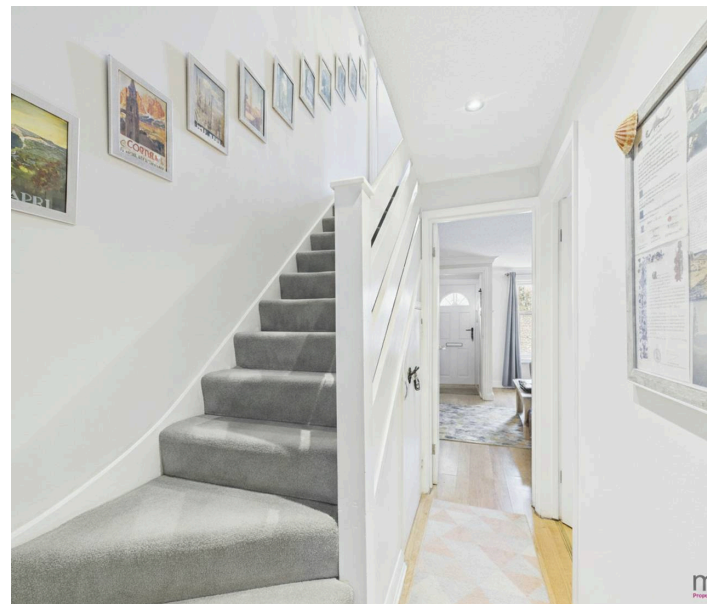
Cheltenham

NO ONWARD CHAIN. A charming 2-bed mid-terrace in vibrant St Paul's, ideal for first-time buyers or investors. Spacious kitchen/diner, south-facing courtyard and a modern boiler. Council Tax band: A

EPC Energy Efficiency Rating: C

EPC Environmental Impact Rating:

- Two Bedroom Terraced House
- Perfect for First Time Buyers, Professionals, Investors or Those Looking to Downsize
- Close Proximity to Town Centre, Brewery Quarter and Beautiful Pittville Park
- Private Enclosed South-Facing Courtyard Garden
- Spacious Kitchen/Dining Room
- Both Large Double Bedrooms
- Popular St Pauls Location with Views of St Pauls Church
- Permit Parking Available
- Great Transport Links to the Train Station, M5 and A40





Floor 0



Floor 1

Approximate total area⁽¹⁾

599 ft²

55.6 m²

(1) Excluding balconies and terraces

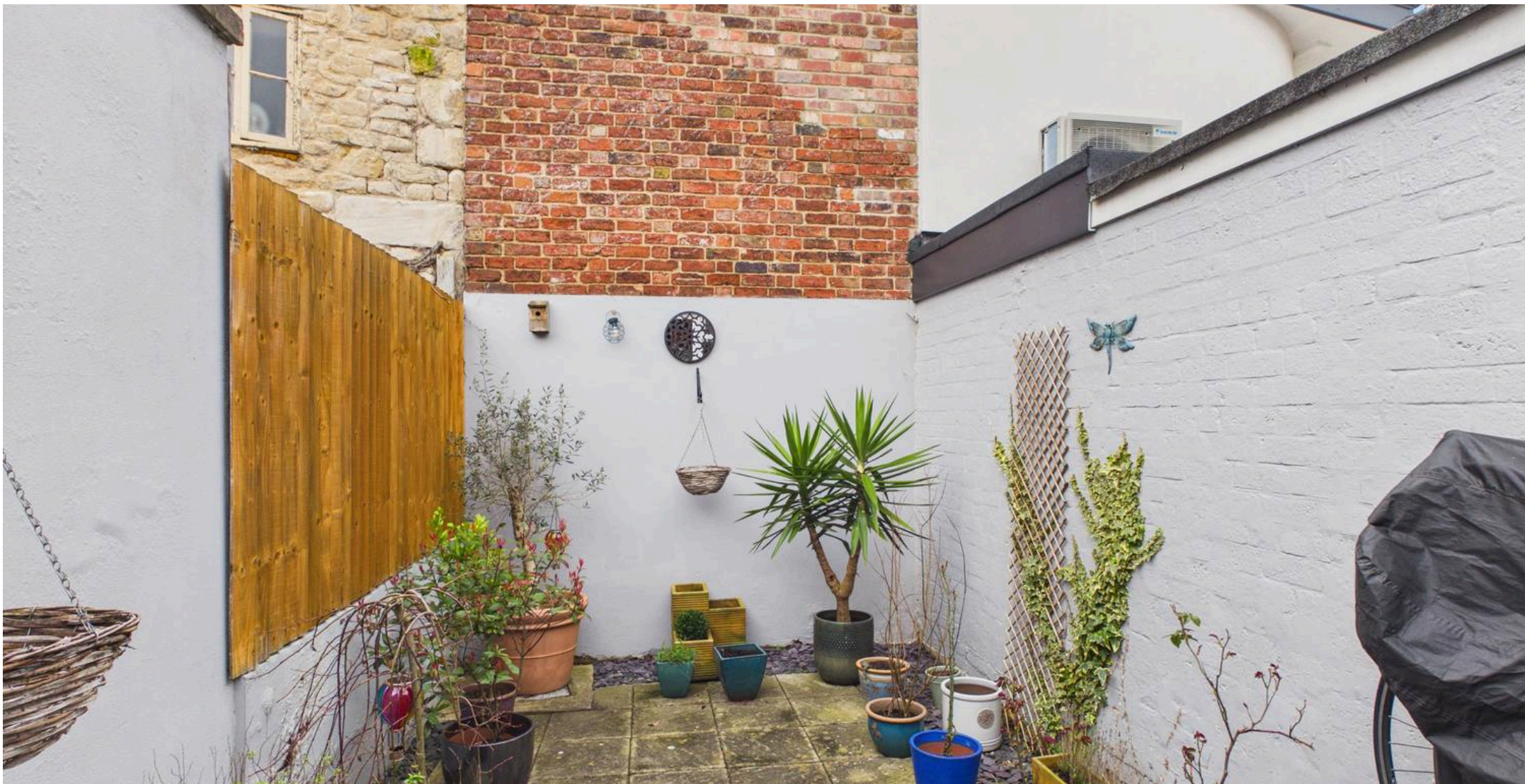
Reduced headroom

----- Below 5 ft/1.5 m

Calculations reference the RICS IPMS 3C standard. Measurements are approximate and not to scale. This floor plan is intended for illustration only.

GIRAFFE360





Move Estate Agents Cheltenham

1 The Clarence Clarence Parade, Cheltenham - GL50 3NY

01242 257333

cheltenham@move.uk.net

move.uk.net/

move
Property Sales & Lettings