



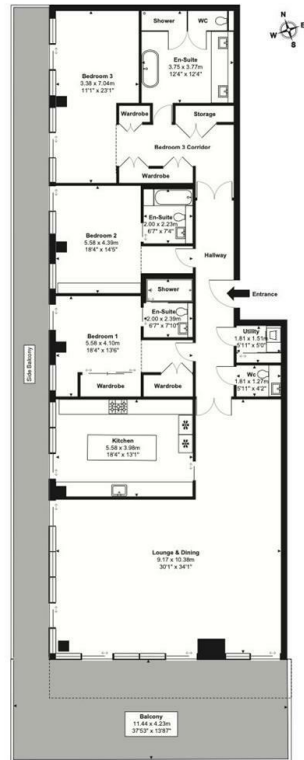
## **The Heron, 5 Moor Lane**

, LONDON EC2Y 9BB

- Approx. 214 Sq M
- Residents' restaurant & cocktail bar
- Residents Lounge & Cinema
- Walking Distance to Moorgate/Liverpool Street Station
- CTB-H
- Ultra-Luxurious 3 bedrooms 4 bathrooms
- On site swimming pool & Spa
- 24 Hours Concierge
- EPC-B

**£13,000 PCM**

Local Authority **City Of London**  
Council Tax Band **H**  
EPC Rating **B**



**33rd Floor**  
Total Internal Area: 216.2 m<sup>2</sup> ... 2327 ft<sup>2</sup>  
Total External Area: 89.42 m<sup>2</sup> ... 963 ft<sup>2</sup>  
Total Footprint Area: 305.62 m<sup>2</sup> ... 3290 ft<sup>2</sup>

**London Office Office**  
Spaces Victoria, 25 Wilton Road, Pimlico,  
London, SW1V 1LW

**Contact**  
020 3084 3094  
XL@londonvictoriagroups.co.uk  
www.londonvictoriagroups.co.uk

Agents Note: Whilst every care has been taken to prepare these particulars, they are for guidance purposes only. All measurements are approximate and for general guidance purposes only and whilst every care has been taken to ensure accuracy, they should not be relied upon and potential buyers/tenants are advised to recheck the measurements.

