

Highbury Stadium Square, N5

£550,000

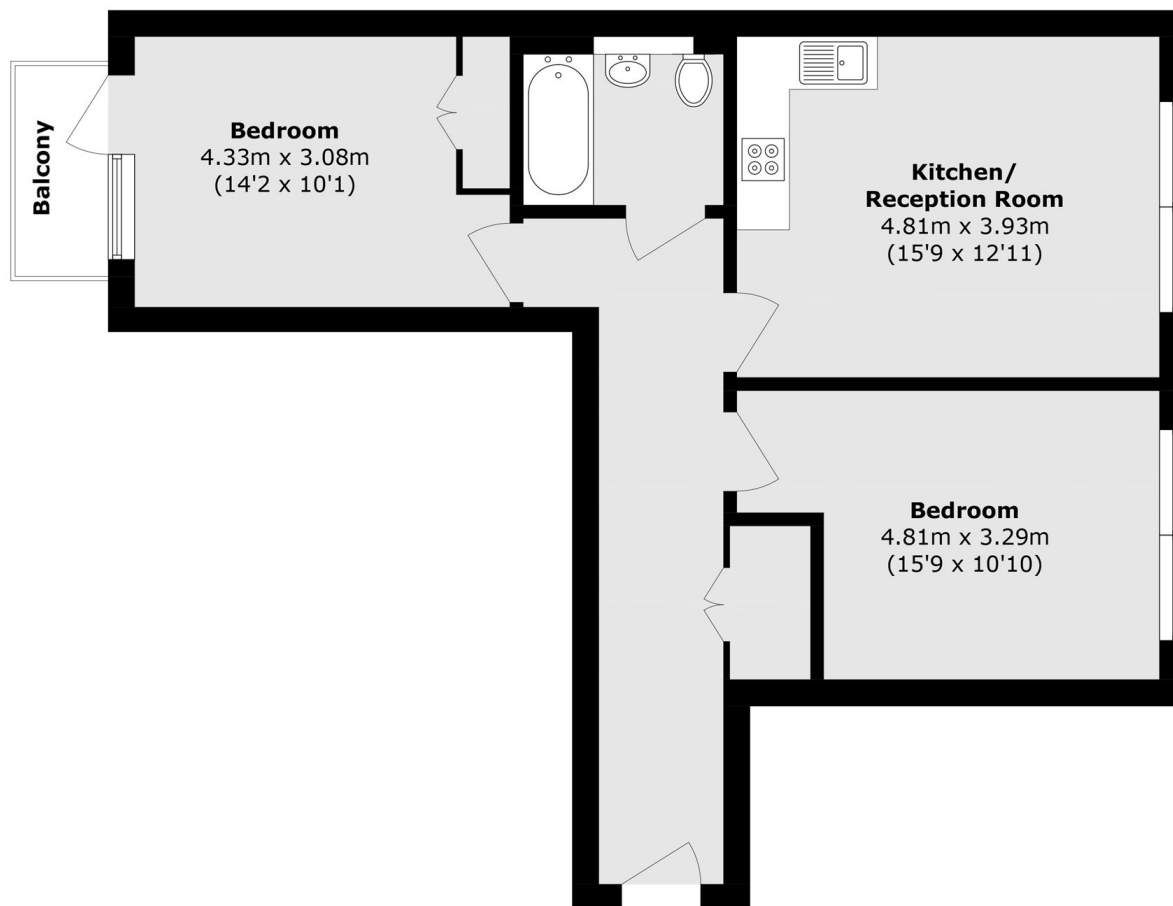
A large, lateral two bedroom apartment situated in the Southstand of Highbury Stadium Square. This property benefits from an abundance of natural light, a private balcony and is being sold chain free.

Highbury Stadium Square is 0.1 miles to Arsenal station (Piccadilly line), with Drayton Park station 0.3 miles away. The development is well served by the many shops and restaurants of Highbury Barn only a short walk away.

Features

- Two Bedrooms
- Balcony
- Open-Plan Living
- 24-hour Concierge
- Chain Free

Highbury Stadium Square, London, N5



Total area (approx.): 66.2 sq. m (712.6 sq. ft)
Balcony area (approx.): 2.54 sq. m (27.3 sq. ft)