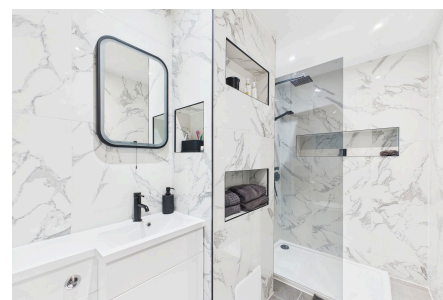


South Holmes Road, Horsham

£185,000

1 1 1



An Exceptionally refurbished Split Level Maisonette, boasting 15'10 x 15'4 Kitchen Living Space and a Private Roof Terrace, offered to the market with No Onward Chain.

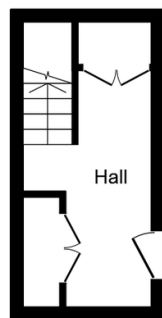
Tenure: Leasehold

Council Tax: Band B

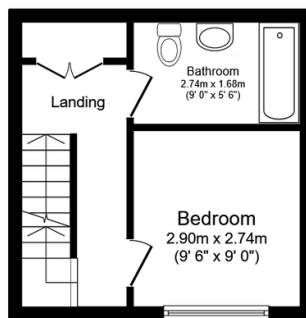
EPC Rating: Current C - Potential C

Key Features

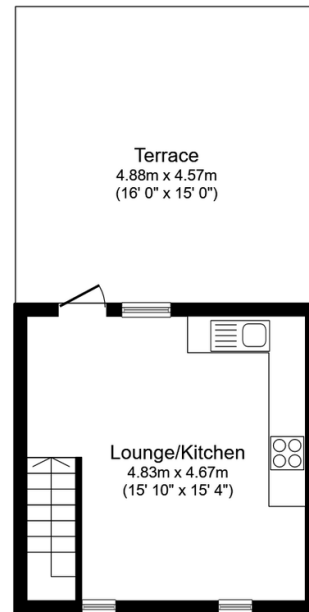
- Watch Our Video Tour
- Private Roof Terrace
- Large Double Bedroom
- Vaulted Ceilings
- Private Front Door
- Exceptionally Refurbished Throughout
- Open Plan Kitchen/ Living
- Striking Shower Room
- Split Level Accommodation
- No Onward Chain



Ground Floor
Floor area 9.8 sq.m.
(106 sq.ft.)



First Floor
Floor area 21.4 sq.m. (230 sq.ft.)



Second Floor
Floor area 21.4 sq.m. (230 sq.ft.)

Total floor area: 52.6 sq.m. (566 sq.ft.)

This floor plan is for illustrative purposes only. It is not drawn to scale. Any measurements, floor areas (including any total floor area), openings and orientations are approximate. No details are guaranteed, they cannot be relied upon for any purpose and do not form any part of any agreement. No liability is taken for any error, omission or misstatement. A party must rely upon its own inspection(s). Powered by www.Propertybox.io